



The Tors

Tavistock

LiveWest
A home for everyone

A taste of local life

bovishomes.co.uk

**Bovis
Homes** 



Welcome to The Tors

This exciting new development is in historic Tavistock, a West Devon stannary town for the tin mining industry and now a lively centre just 15 miles from the port city of Plymouth. Sitting beside the pretty River Tavy and within easy reach of Dartmoor National Park, Tavistock is a popular market town with world heritage status and a rich history.

Today its range of independent shops sits alongside the 900-year-old pannier market. With pubs, restaurants, leisure and sports facilities, as well as schools, health centres and supermarkets, Tavistock offers everything you need.

At The Tors, you'll find a stunning selection of 2, 3, 4 and 5 bedroom homes, all carefully designed to suit the needs of modern living. So if you're looking for a quality new home in a sought-after location, your search ends here.

Getting around

The Tors is just off the A390 Callington Road, just over a mile from the town centre and close to the A386 for Yelverton, six miles away and Plymouth, 15 miles. From Plymouth the A38 takes you west to Cornwall. The M5 at Exeter is 40 miles away via the A386 and A30. For train services to Plymouth and Exeter, Gunnislake Railway Station, is less than five miles away along the A390. For air travel Exeter Airport is 47 miles away and there are ferries from Plymouth.

A trip to the shops

For supermarket shopping choose from a Tesco superstore, a Lidl, or Morrisons, all less than a mile away. There's also a Spar convenience store about half a mile away. In Tavistock you'll find one of the best Farmers' Markets in the South West, plus the historic Pannier Market – home to independent traders and hidden gems. The town is bursting with unique shops and boutiques selling books, clothing, crafts, outdoor equipment, antiques, food and jewellery. Take a trip to Plymouth and explore Drake Circus,

with more than 70 top brands such as M&S, Joules and Jack Wills. The city centre offers a mix of independent and High Street stores and the 150-stall Plymouth Market is packed with fresh fish and food and drink stalls.

Taking time out

Tavistock and the surrounding area is full of things to do from canoeing down the River Tamar, trekking across Dartmoor National Park, or enjoying live music at Tavistock Wharf. There are clubs for golf, football and rugby, and for fitness fans there's a leisure centre and a swim centre. Yelverton Cinema offers the latest films and you can walk or cycle along scenic Drake's Trail. Discover centuries of history linked to Tavistock Abbey with a guided tour by a local historian. At Morwellham Quay you'll find a living museum on the River Tamar and the impressive National Trust Cotehele Tudor House is also close by. In Plymouth the Royal William Yard boasts the largest collection of Grade 1 listed military buildings in Europe.

Education

There are a number of pre-schools within easy reach of The Tors and the Tavistock Community Primary School is less than a mile away. There are two other primary schools in the town, Whitchurch Community Primary and St Rumon's Church of England Infants School. St Rumon's is part of the Tavistock Church School's Federation that includes St Peter's Church of England Junior School. For senior pupils Tavistock College is an Academy catering for 11 to 18-year-olds. The independent Mount Kelly is a mixed boarding and day school for pupils aged from 3 to 18-years-old.



The Tors

35 Brook Street,
Tavistock PL19 0HE

From Exeter

- From Exeter head East on the A30 for 25 miles
- Leave the A30 at the exit signposted Tavistock/Plymouth and head left on the A386
- Follow the A386 for 12 miles until you approach Tavistock and continue straight at the first roundabout
- At the next roundabout turn right, signposted Plymouth/Town Centre
- At the next roundabout continue straight, following town centre
- Turn right into Duke Street, leading to Brook Street
- The Bovis Homes shop is 150 meters ahead on the right



From Plymouth

- From Plymouth head North on the A386 for 7 miles towards Yelverton
- At the roundabout take the first exit, staying on the A386 towards Tavistock
- Stay on the A386 for 4 miles
- As you approach Tavistock, continue straight at the first three roundabouts, staying on the A386
- At the fourth roundabout turn right, signposted Town Centre
- Continue ½ mile to the next roundabout & turn left, following town centre
- Turn right into Duke Street, leading to Brook Street
- The Bovis Homes shop is 150 meters ahead on the right



MIX
Paper from
responsible sources
FSC® C014177

When you have finished with this leaflet please recycle it.

Cover photograph of Tavistock. Not view from the development. The streetscene shown above has been produced for illustrative purposes only, please check the details of the homes you are interested in with the sales advisor.

Bovis Homes Limited, South West region
Heron Road, Sowton Industrial Estate, Exeter, Devon EX2 7LL. Telephone: 01392 344 700

Produced by the Bovis Homes Graphic Design Department.

DTAV1 Printed 06.2019

**Bovis
Homes** 

So much choice...

Part of the excitement of buying a new home is the thrill of being the first person to live in the property and having a brand new contemporary kitchen and modern bathroom. Our premium brand partners ensure that all of our fixtures and fittings comply with the latest Government building regulations and only branded appliances are installed in your new home.

Once you know what specification comes included, you'll have a choice from our specially selected tiles for your kitchen and bathrooms, as well as kitchen worktops and cupboard doors. You can then use the Bovis Homes **Select** brochure to add the finishing touches to your home to make it extra special for you!

From personalising your bathrooms with stunning ceramics, or adding smooth sliding wardrobes to your master bedroom, there are a wide range of additional options and upgrades available.

The availability of items is subject to the stage of build, and can vary by development and house type. Our sales advisors will be pleased to provide guidance.



The Tors Tavistock



When you have finished with this leaflet please recycle it.

The specification shown in this leaflet is correct at the time of going to press. Bovis Homes is continually reviewing and updating the specification on all housetypes and therefore reserves the right to change specification details. Photographs depict a typical Bovis Homes interior and may include optional upgrades. For full details regarding current specification and finishes, for the plots you are interested in, please refer to our sales advisor.

Produced by the Bovis Homes Graphic Design Department.

DTAV1 Printed 06.2019



Specification

bovishomes.co.uk



The Tors

Tavistock

Use this guide to see what features are included in your new home. Your sales advisor will be happy to discuss the **Select** range of extras available.

Kitchen

2 bedroom
The Hawthorn
The Buckthorn

3 bedroom
The Hazel
The Cypress
The Spruce
The Poplar

4 bedroom
The Juniper
The Chestnut
The Aspen

5 bedroom
The Birch

Choice of standard fitted kitchen (doors and worktops)*	■	■						
Choice of premium fitted kitchen (doors and worktops)*								■
Stainless steel sink and drainer (single bowl) with chrome mixer tap	■	■						
Stainless steel sink and drainer (single and a half bowl) with chrome mixer tap			■	■	■	■		
Stainless steel sink and drainer (single bowl) with chrome mixer tap in utility				■	■			■
Hotpoint hob (60cm) with built-in single oven (high level or under), with glass splashback and curved glass chimney hood	■	■	■	■	■			
Hotpoint hob (75cm) with built-in double oven (high level or under), with glass splashback and curved glass chimney hood								■
Bosch (75cm) hob with built-in double oven at high level, with glass splashback and stainless steel pyramid chimney hood								■
Pre-wired for under unit lighting option	■	■	■	■	■			
LED under unit flexible strip lighting						■	■	■
Fridge / freezer space	■	■	■	■	■			
Integrated (Indesit) 50 / 50 fridge freezer						■	■	■
Space for integrated dishwasher with plumbing and electrics (with removable base unit)	■	■	■	■	■	■	■	■
Integrated (Indesit) dishwasher								■
Space for washing machine with plumbing and electrics in utility			■	■				■
Space for washing machine with plumbing and electrics in kitchen	■	■			■	■		

Bathrooms and en suite(s)

Ideal Standard contemporary white sanitary ware suite	■	■	■	■				
Ideal Standard contemporary white Concept Air sanitary ware suite with Aqua blade WC technology					■	■	■	■
Ideal Standard close coupled WC to cloakroom	■		■	■	■	■	■	■
Ideal Standard low profile shower tray with glass enclosure			■	■	■	■	■	■
Handheld hair wash attachment			■	■	■	■	■	■
Shower over the bath	■	■						
En suite to bedroom 1		■	■	■	■	■	■	■
En suite to bedroom 2								■
Choice of Standard Porcelanosa wall tiling (splashback, half-height over bath, and full-height to shower cubicle)*	■	■	■	■				
Choice of Premium Porcelanosa wall tiling (half-height to walls with fitted sanitary ware, half-height over bath, and full-height to shower cubicle)*					■	■	■	■
Shaver socket / toothbrush charger to bathroom and main en suite	■	■	■	■	■	■	■	■
Angled spotlight fitting in chrome to bathroom and en suite(s)	■	■	■	■	■	■	■	■
Radiator or white towel warmer in bathroom / en-suite (where applicable)	■	■	■	■				
Chrome towel warmer in bathroom and en suite(s)					■	■	■	■



Bedrooms

Built-in wardrobe(s) to bedroom 1 (with shelf and rail)					■	■	■	■
---	--	--	--	--	---	---	---	---

Doors and Windows

Front door with multi-point security locking system and security chain	■	■			■	■	■	■
PVCu double glazing to windows	■	■	■	■	■	■	■	■
Double glazed PVCu French doors	■							
Powder coated aluminium double glazed bi-fold doors					■	■	■	■
White painted four-panel internal doors with chrome lever handles	■	■	■	■	■	■	■	■
Paving outside French/bifold door and path to garage personnel door (where applicable)	■	■	■	■	■	■	■	■

General

White painted walls and smooth white ceilings	■	■	■	■	■	■	■	■
Combined usb / double sockets in kitchen and bedroom 1	■	■	■	■	■	■	■	■
Multi-media point in living room	■	■	■	■	■	■	■	■
TV point to bedroom 1 and family room (where applicable)	■	■	■	■	■	■	■	■
Master telephone socket (plus to study where shown)	■	■	■	■	■	■	■	■
Gas central heating with wall mounted combi-boiler, programme selector and room thermostat(s)	■	■	■	■	■	■	■	■
Thermostatic valves to all radiators (with the exception of rooms with separate thermostat control)	■	■	■	■	■	■	■	■
Wiring for external light to front porch, and rear door	■	■	■	■	■	■	■	■
Mains wired smoke detectors with battery back-up	■	■	■	■	■	■	■	■
Power and lighting to 'on plot' garage (where applicable)	■	■	■	■	■	■	■	■
Enclosed fenced rear garden, and garden gate (where applicable)	■	■	■	■	■	■	■	■
Landscaped front gardens	■	■	■	■	■	■	■	■
NHBC Buildmark cover	■	■	■	■	■	■	■	■
First two years' customer service support from Bovis Homes	■	■	■	■	■	■	■	■

■ fitted as standard - included in the property
* subject to stage of construction



The Tors

Tavistock

LiveWest
A home for everyone

Development plan

bovishomes.co.uk

**Bovis
Homes** 

The Tors

Tavistock

2 bedroom home

The Buckthorn

The Hawthorn

3 bedroom home

The Hazel

The Cypress

The Spruce

The Poplar

4 bedroom home

The Juniper

The Chestnut

The Aspen

5 bedroom home

The Birch

Affordable housing

bcp bin collection point
v visitor space





MIX
Paper from
responsible sources
FSC® C014177

When you have finished with this leaflet please recycle it.

The streetscene shown has been produced for illustrative purposes only, please check the details of the homes you are interested in with the sales advisor.

Bovis Homes Limited, South West region
Heron Road, Sowton Industrial Estate, Exeter, Devon EX2 7LL. Telephone: 01392 344 700

Produced by the Bovis Homes Graphic Design Department.

DTAV1 Printed 06.2019





The Buckthorn

2 bedroom home



When you have finished with this leaflet please recycle it.

The specification shown in this leaflet is correct at the time of going to press. Bovis Homes is continually reviewing and updating the specification on all house types and therefore reserves the right to change specification details. Photographs depict a typical Bovis Homes interior and may include optional upgrades. For full details regarding current specification and finishes, for the plots you are interested in, please refer to our sales advisor.

This leaflet has been produced for illustrative purposes only. The apartment building shown (including its position) is a computer generated artists impression. Any surrounding areas, landscaping, roads, footpaths, driveways, walls, fences, trees, bushes and other details shown in this illustration are merely to create an impression. Please refer to the sales advisor for details of individual apartments. Please see the development layout plan for details of the apartment location and proximity to other houses.

Produced by the Bovis Homes Graphic Design Department.

DTAV1 Printed 06.2019



bovishomes.co.uk

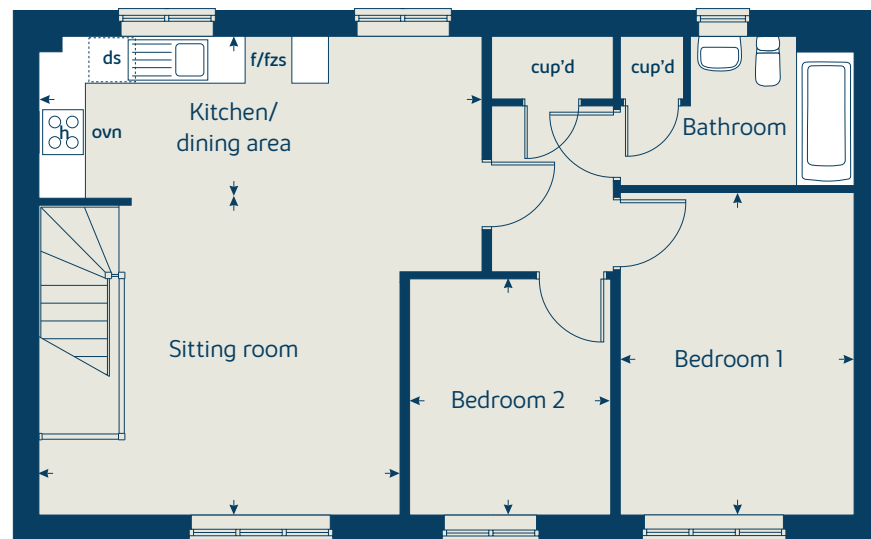


The Buckthorn

2 bedroom home



First floor



	metres	feet/inches
Kitchen/dining area	5.69 x 2.06	18' 8" x 6' 9"
Sitting room	4.64 x 4.03	15' 2" x 13' 2"
Bedroom 1	4.10 x 3.01	13' 5" x 9' 10"
Bedroom 2	3.00 x 2.58	9' 10" x 8' 5"

ovn	oven	ds	dishwasher space
h	hob	cup'd	cupboard
ws	washing machine space	←→	measuring points
f/fzs	fridge freezer space		

The Buckthorn | XF201 DTAV1 4pp B19 |

These floorplans have been produced for illustrative purposes only. Room sizes shown are between arrow points as indicated on plan. The dimensions have tolerances of + or -50mm and should not be used other than for general guidance. If specific dimensions are required, enquiries should be made to the sales advisor.

Ground floor

Alternative layouts apply to selected plots only. Please see sales advisor for further details.





The Hawthorn

2 bedroom home

LiveWest
A home for everyone

**Bovis
Homes** 

bovishomes.co.uk

The Hawthorn

2 bedroom home

Ground floor	metres	feet/inches
Kitchen	3.32 x 2.96	10' 10" x 9' 8"
Sitting/dining area	4.46 x 4.07	14' 6" x 13' 6"

First floor

Bedroom 1	4.06 x 2.68	13' 4" x 8' 9"
Bedroom 2	4.06 x 2.81	13' 4" x 9' 3"

The Hawthorn | X203 P7 vt DTAV1 B19 |

This floorplan has been produced for illustrative purposes only. Room sizes shown are between arrow points as indicated on plan. The dimensions have tolerances of + or -50mm and should not be used other than for general guidance. If specific dimensions are required, enquiries should be made to the sales advisor.

* Windows apply to selected plots only. Please see sales advisor for further details.

ovn	oven	f/fzs	fridge freezer space
h	hob	cup'd	cupboard
ds	dishwasher space	↔	measuring points
ws	washing machine space		

Please refer to the sales advisor for specific plot details as the illustrations shown are computer generated impressions of how the property may look so are indicative only. External details or finishes may vary on individual plots and homes may be built in either detached or attached styles depending on the development layout. Exact specifications, window styles and whether a property is left or right handed may differ from plot to plot.

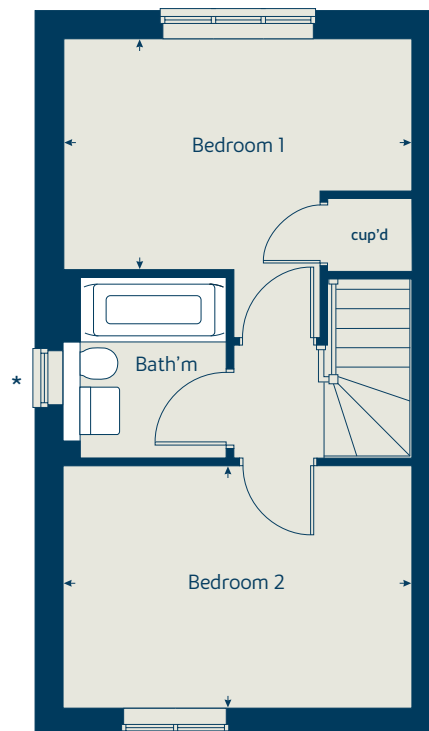
The floorplans shown are not to scale. Measurements are based on the original drawings. Slight variations may occur during construction.

Produced by the Bovis Homes Graphic Design Department.

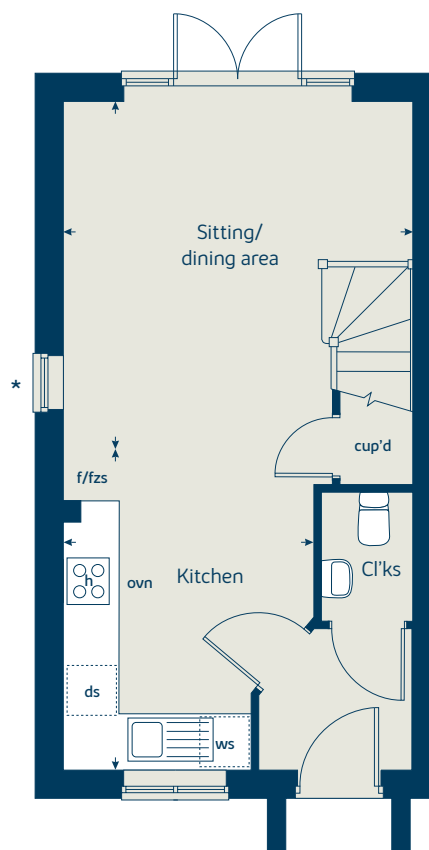
When you have finished with this leaflet please recycle it.

DTAV1 Printed 06.2019

First floor



Ground floor





The Hazel

3 bedroom home

LiveWest
A home for everyone

**Bovis
Homes** 

bovishomes.co.uk

The Hazel

3 bedroom home

Ground floor	metres	feet/inches
Kitchen/dining room	5.18 x 2.98	16' 11" x 9' 9"
Sitting room	4.17 x 3.66	13' 8" x 12' 0"

First floor

Bedroom 1	3.53 x 2.97	11' 7" x 9' 8"
Bedroom 2	3.04 x 2.95	9' 11" x 9' 8"
Bedroom 3	2.44 x 2.15	8' 0" x 7' 0"

The Hazel | X305 P5 vt DTA1 B19 |

This floorplan has been produced for illustrative purposes only. Room sizes shown are between arrow points as indicated on plan. The dimensions have tolerances of + or -50mm and should not be used other than for general guidance. If specific dimensions are required, enquiries should be made to the sales advisor.

① Alternative window layout applies to selected plots only. Please see sales advisor for further details.

* Windows apply to selected plots only. Please see sales advisor for further details.

ovn	oven	f/fzs	fridge freezer space
h	hob	cup'd	cupboard
ds	dishwasher space	↔	measuring points
ws	washing machine space		

Please refer to the sales advisor for specific plot details as the illustrations shown are computer generated impressions of how the property may look so are indicative only. External details or finishes may vary on individual plots and homes may be built in either detached or attached styles depending on the development layout. Exact specifications, window styles and whether a property is left or right handed may differ from plot to plot.

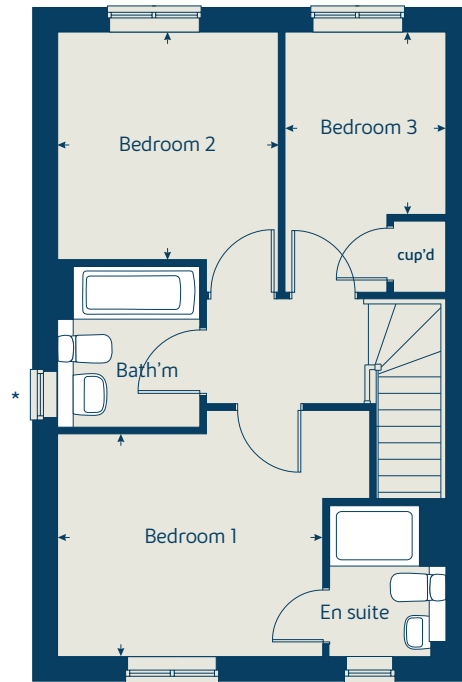
The floorplans shown are not to scale. Measurements are based on the original drawings. Slight variations may occur during construction.

Produced by the Bovis Homes Graphic Design Department.

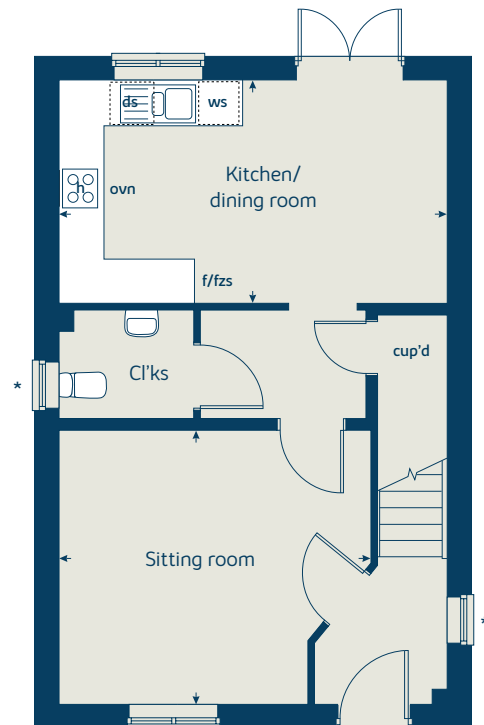
When you have finished with this leaflet please recycle it.

DTA1 Printed 06.2019

First floor



Ground floor





The Spruce

3 bedroom home

LiveWest
A home for everyone

**Bovis
Homes** 

bovishomes.co.uk

The Spruce

3 bedroom home

Ground floor	metres	feet/inches
Kitchen/dining area	5.52 x 3.13	18' 1" x 10' 3"
Sitting room	5.52 x 3.31	18' 1" x 10' 10"

First floor

Bedroom 1	3.38 x 3.34	11' 1" x 10' 11"
Bedroom 2	3.61 x 3.18	11' 10" x 10' 5"
Bedroom 3	3.61 x 2.25	11' 10" x 7' 4"

The Spruce | X307 P5 vt DTAV1 B19 |

This floorplan has been produced for illustrative purposes only. Room sizes shown are between arrow points as indicated on plan. The dimensions have tolerances of + or -50mm and should not be used other than for general guidance. If specific dimensions are required, enquiries should be made to the sales advisor.

- ① Alternative ground floor layout applies to selected plots only. Please see sales advisor for further details.
- ② Alternative ground floor layouts apply to selected plots only. Please see sales advisor for further details.
- ③ Alternative ground floor layout applies to selected plots only. Please see sales advisor for further details.

* Windows apply to selected plots only. Please see sales advisor for further details.

ovn	oven	f/fzs	fridge freezer space
h	hob	cup'd	cupboard
ds	dishwasher space	↔	measuring points
ws	washing machine space		

Please refer to the sales advisor for specific plot details as the illustrations shown are computer generated impressions of how the property may look so are indicative only. External details or finishes may vary on individual plots and homes may be built in either detached or attached styles depending on the development layout. Exact specifications, window styles and whether a property is left or right handed may differ from plot to plot.

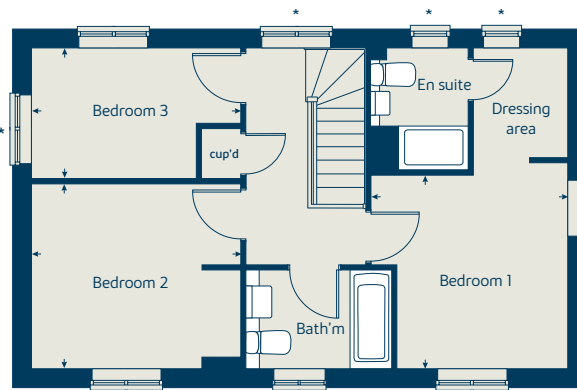
The floorplans shown are not to scale. Measurements are based on the original drawings. Slight variations may occur during construction.

Produced by the Bovis Homes Graphic Design Department.

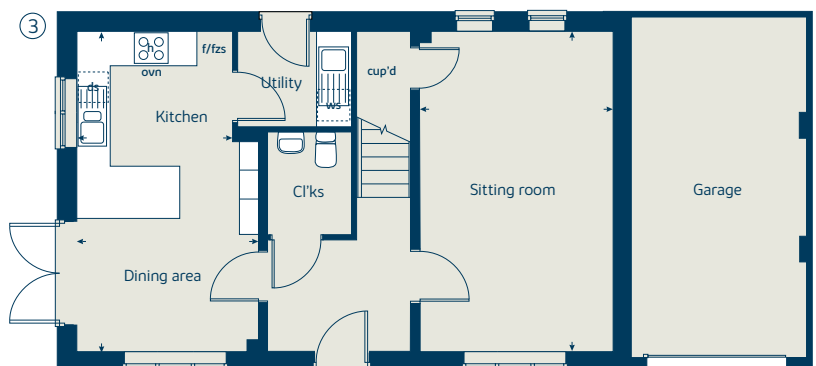
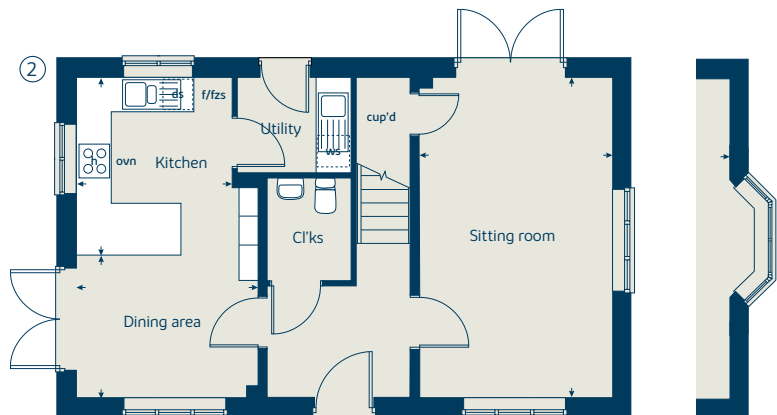
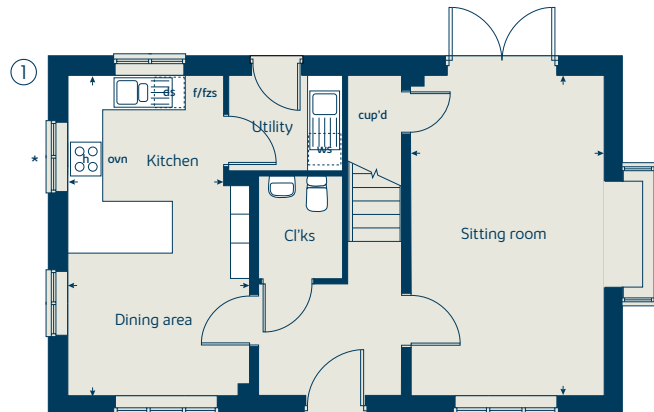
When you have finished with this leaflet please recycle it.

DTAV1 Printed 06.2019

First floor



Ground floor





The Cypress

3 bedroom home

LiveWest
A home for everyone

**Bovis
Homes** 

bovishomes.co.uk

The Cypress

3 bedroom home

Ground floor	metres	feet/inches
Kitchen/dining area	5.52 x 3.49	18' 1" x 11' 5"
Sitting room	4.32 x 3.40	14' 2" x 11' 1"

First floor

Bedroom 1	4.09 x 3.27	13' 5" x 10' 9"
Bedroom 2	3.27 x 2.76	10' 9" x 9' 1"
Bedroom 3	2.55 x 2.16	8' 4" x 7' 1"

The Cypress | X308 P6 vt DTAV1 B19 |

This floorplan has been produced for illustrative purposes only. Room sizes shown are between arrow points as indicated on plan. The dimensions have tolerances of + or -50mm and should not be used other than for general guidance. If specific dimensions are required, enquiries should be made to the sales advisor.

① Alternative window layout applies to selected plots only. Please see sales advisor for further details.

* Windows apply to selected plots only. Please see sales advisor for further details.

ovn	oven	f/fzs	fridge freezer space
h	hob	cup'd	cupboard
ds	dishwasher space	↔	measuring points
ws	washing machine space		

Please refer to the sales advisor for specific plot details as the illustrations shown are computer generated impressions of how the property may look so are indicative only. External details or finishes may vary on individual plots and homes may be built in either detached or attached styles depending on the development layout. Exact specifications, window styles and whether a property is left or right handed may differ from plot to plot.

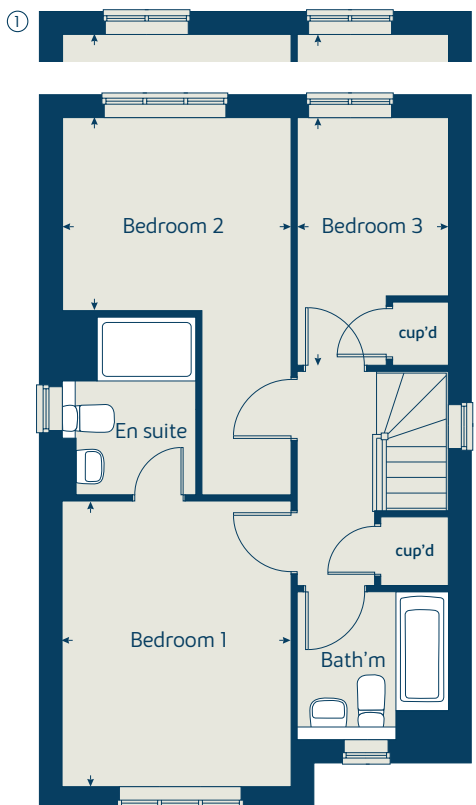
The floorplans shown are not to scale. Measurements are based on the original drawings. Slight variations may occur during construction.

Produced by the Bovis Homes Graphic Design Department.

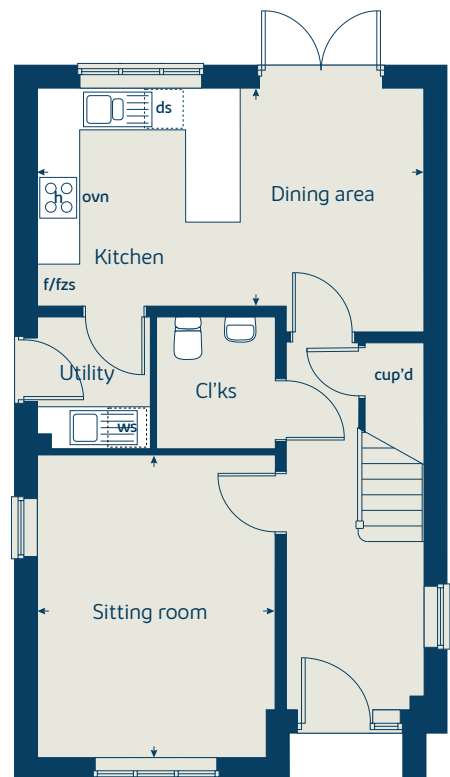
When you have finished with this leaflet please recycle it.

DTAV1 Printed 06.2019

First floor



Ground floor





The Poplar

3 bedroom home

LiveWest
A home for everyone

**Bovis
Homes** 

bovishomes.co.uk

The Poplar

3 bedroom home

Ground floor	metres	feet/inches
Kitchen	3.72 x 3.53	11' 5" x 6' 3"
Family/dining area	4.74 x 3.07	15' 5" x 10' 2"

First floor	metres	feet/inches
Sitting room	4.73 x 4.13	15' 6" x 13' 7"
Bedroom 3	2.63 x 2.61	8' 8" x 8' 7"

Second floor	metres	feet/inches
Bedroom 1	4.73 x 4.13	15' 6" x 13' 7"
Bedroom 2	4.73 x 2.80	15' 6" x 9' 2"

The Poplar | X310 P3 vt DTAV1 B19 |

This floorplan has been produced for illustrative purposes only. Room sizes shown are between arrow points as indicated on plan. The dimensions have tolerances of + or -50mm and should not be used other than for general guidance. If specific dimensions are required, enquiries should be made to the sales advisor.

- ① Alternative window layout applies to selected plots only. Please see sales advisor for further details.
- ② Alternative window layout applies to selected plots only. Please see sales advisor for further details.
- * Window applies to selected plots only. Please see sales advisor for further details.

ovn	oven	f/fzs	fridge freezer space
h	hob	cup'd	cupboard
ds	dishwasher space	↔	measuring points
ws	washing machine space		

Please refer to the sales advisor for specific plot details as the illustrations shown are computer generated impressions of how the property may look so are indicative only. External details or finishes may vary on individual plots and homes may be built in either detached or attached styles depending on the development layout. Exact specifications, window styles and whether a property is left or right handed may differ from plot to plot.

The floorplans shown are not to scale. Measurements are based on the original drawings. Slight variations may occur during construction.

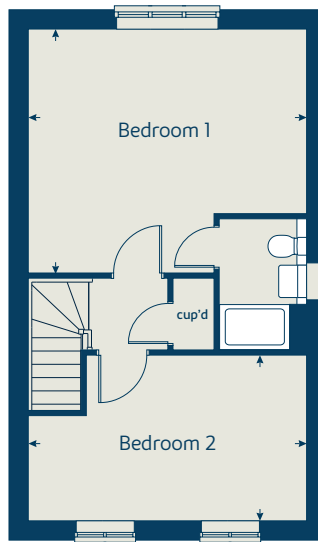
Produced by the Bovis Homes Graphic Design Department.

When you have finished with this leaflet please recycle it.

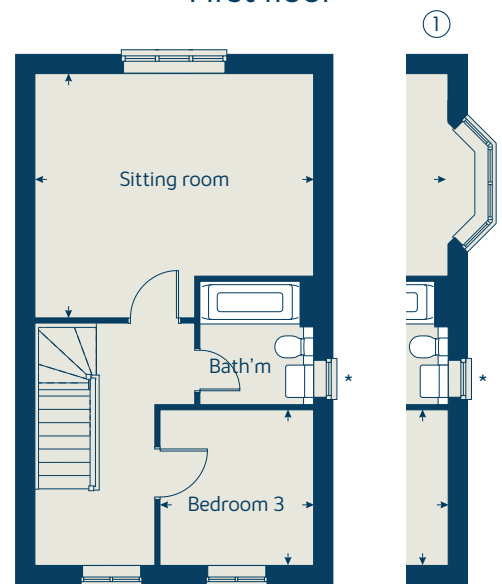
DTAV1 Printed 06.2019



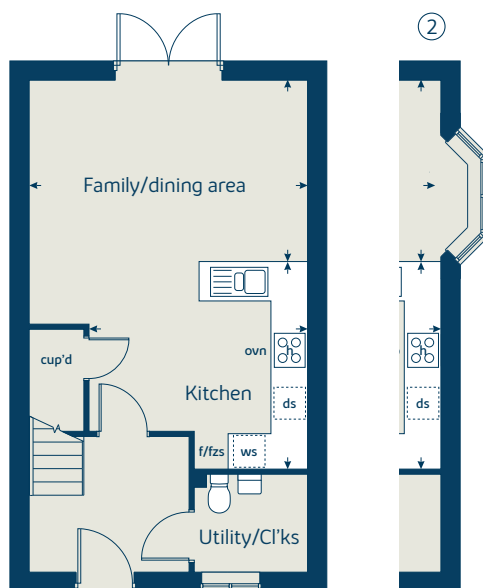
Second floor



First floor



Ground floor



MIX
Paper from
responsible sources
FSC® C014177



The Juniper

4 bedroom home

LiveWest
A home for everyone

**Bovis
Homes** 

bovishomes.co.uk

The Juniper

4 bedroom home

Ground floor	metres	feet/inches
Kitchen	3.51 x 3.00	11' 6" x 9' 10"
Dining/family area	4.21 x 3.51	13' 10" x 11' 6"
Sitting room	4.55 x 3.05	14' 11" x 10' 0"
Study	2.34 x 1.85	7' 8" x 6' 0"

First floor

Bedroom 1	3.53 x 3.04	11' 7" x 10' 0"
Bedroom 2	4.07 x 2.84	13' 4" x 9' 4"
Bedroom 3	3.60 x 2.38	11' 10" x 7' 10"
Bedroom 4	3.52 x 2.38	11' 7" x 7' 10"

The Juniper | X412 P4 vt DTAV1 B19 |

This floorplan has been produced for illustrative purposes only. Room sizes shown are between arrow points as indicated on plan. The dimensions have tolerances of + or -50mm and should not be used other than for general guidance. If specific dimensions are required, enquiries should be made to the sales advisor.

- ① Alternative window layout applies to selected plots only. Please see sales advisor for further details.
- ② Alternative window layout applies to selected plots only. Please see sales advisor for further details.

ovn	oven	ffzr	fridge freezer
h	hob	w	wardrobe
ds	dishwasher space	cup'd	cupboard
ws	washing machine space	↔	measuring points

Please refer to the sales advisor for specific plot details as the illustrations shown are computer generated impressions of how the property may look so are indicative only. External details or finishes may vary on individual plots and homes may be built in either detached or attached styles depending on the development layout. Exact specifications, window styles and whether a property is left or right handed may differ from plot to plot.

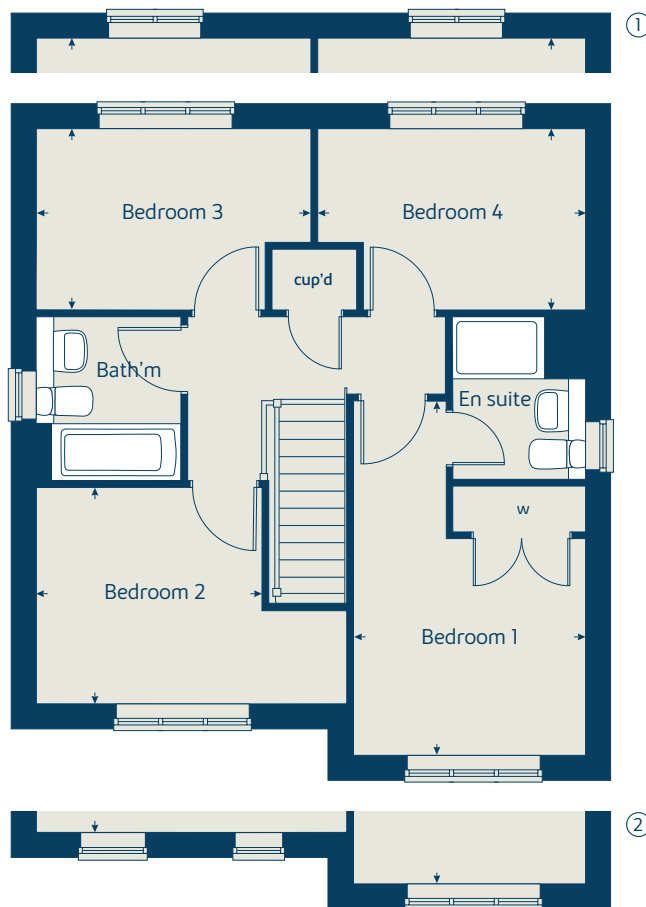
The floorplans shown are not to scale. Measurements are based on the original drawings. Slight variations may occur during construction.

Produced by the Bovis Homes Graphic Design Department.

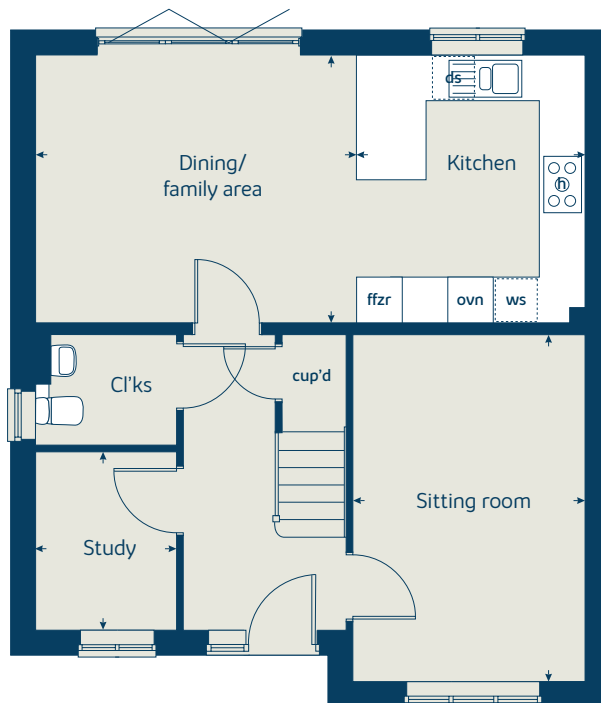
When you have finished with this leaflet please recycle it.

DTAV1 Printed 06.2019

First floor



Ground floor





The Chestnut

4 bedroom home

LiveWest
A home for everyone

**Bovis
Homes** 

bovishomes.co.uk

The Chestnut

4 bedroom home

Ground floor	metres	feet/inches
Kitchen	4.04 x 3.04	13' 3" x 10' 0"
Dining/family area	4.59 x 2.83	15' 1" x 9' 3"
Sitting room	4.97 x 3.40	16' 4" x 11' 2"
Study	3.40 x 1.81	11' 2" x 5' 11"

First floor

Bedroom 1	3.24 x 2.98	10' 8" x 9' 9"
Bedroom 2	3.47 x 3.36	11' 5" x 11' 0"
Bedroom 3	3.25 x 2.34	10' 8" x 7' 8"
Bedroom 4	3.42 x 2.34	11' 3" x 7' 8"

The Chestnut | X413 P5 vt DTAV1 B19 |

This floorplan has been produced for illustrative purposes only. Room sizes shown are between arrow points as indicated on plan. The dimensions have tolerances of + or -50mm and should not be used other than for general guidance. If specific dimensions are required, enquiries should be made to the sales advisor.

ovn	oven	ffzr	fridge freezer
h	hob	w	wardrobe
ds	dishwasher space	cup'd	cupboard
ws	washing machine space	↔	measuring points

Please refer to the sales advisor for specific plot details as the illustrations shown are computer generated impressions of how the property may look so are indicative only. External details or finishes may vary on individual plots and homes may be built in either detached or attached styles depending on the development layout. Exact specifications, window styles and whether a property is left or right handed may differ from plot to plot.

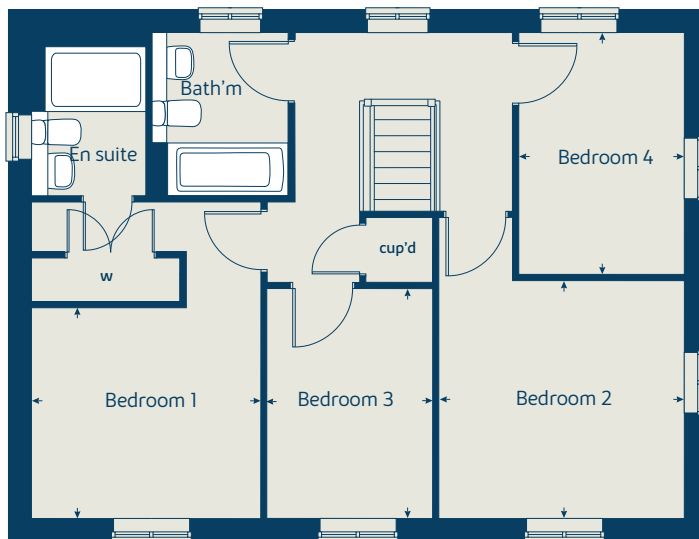
The floorplans shown are not to scale. Measurements are based on the original drawings. Slight variations may occur during construction.

Produced by the Bovis Homes Graphic Design Department.

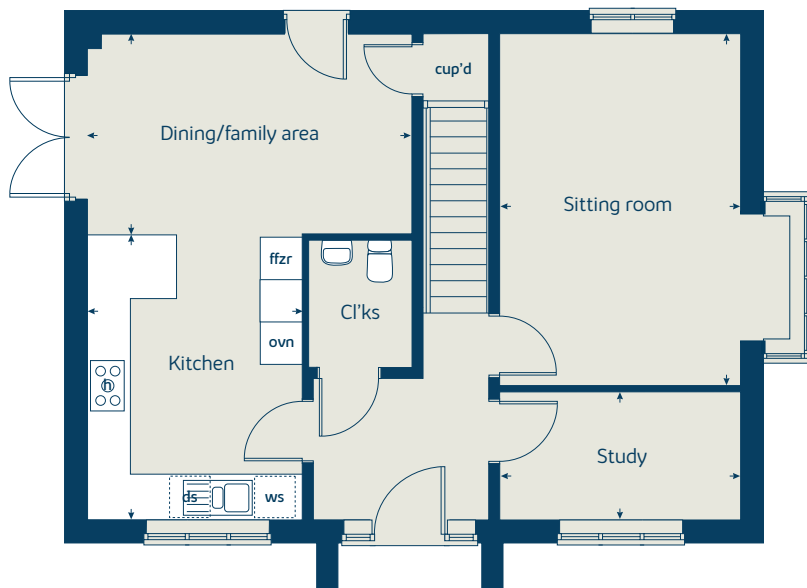
When you have finished with this leaflet please recycle it.

DTAV1 Printed 06.2019

First floor



Ground floor





The Aspen

4 bedroom home

LiveWest
A home for everyone

**Bovis
Homes** 

bovishomes.co.uk

The Aspen

4 bedroom home

Ground floor	metres	feet/inches
Kitchen/dining area	7.78 x 3.37	25' 6" x 11' 1"
Sitting room	5.03 x 3.39	16' 6" x 11' 1"
Study	2.02 x 2.01	6' 8" x 6' 7"

First floor

Bedroom 1	3.94 x 3.02	12' 11" x 9' 11"
Bedroom 2	3.74 x 3.10	12' 3" x 10' 2"
Bedroom 3	4.07 x 2.45	13' 4" x 8' 1"
Bedroom 4	3.61 x 2.45	11' 10" x 8' 1"

The Aspen | X414 P5 vt DTAV1 B19 |

This floorplan has been produced for illustrative purposes only. Room sizes shown are between arrow points as indicated on plan. The dimensions have tolerances of + or -50mm and should not be used other than for general guidance. If specific dimensions are required, enquiries should be made to the sales advisor.

ovn	oven	ffzr	fridge freezer
h	hob	w	wardrobe
ds	dishwasher space	cup'd	cupboard
ws	washing machine space	↔	measuring points

Please refer to the sales advisor for specific plot details as the illustrations shown are computer generated impressions of how the property may look so are indicative only. External details or finishes may vary on individual plots and homes may be built in either detached or attached styles depending on the development layout. Exact specifications, window styles and whether a property is left or right handed may differ from plot to plot.

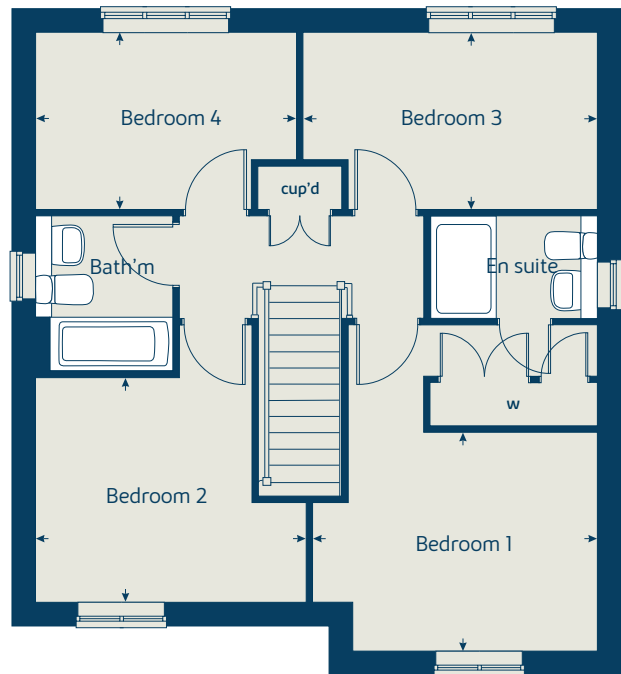
The floorplans shown are not to scale. Measurements are based on the original drawings. Slight variations may occur during construction.

Produced by the Bovis Homes Graphic Design Department.

When you have finished with this leaflet please recycle it.

DTAV1 Printed 06.2019

First floor



Ground floor





The Birch

5 bedroom home

LiveWest
A home for everyone

**Bovis
Homes** 

bovishomes.co.uk

The Birch

5 bedroom home

Ground floor	metres	feet/inches
Kitchen	4.54 x 3.65	14' 11" x 12' 0"
Family/dining area	5.47 x 3.51	17' 11" x 11' 6"
Sitting room	4.17 x 3.61	13' 8" x 11' 10"
Study/dining room	3.41 x 2.99	11' 2" x 9' 10"

First floor	metres	feet/inches
Bedroom 1	3.61 x 3.50	11' 10" x 11' 6"
Bedroom 2	3.88 x 2.89	12' 9" x 9' 6"
Bedroom 3	3.06 x 2.81	10' 0" x 9' 3"
Bedroom 4	2.98 x 2.83	9' 9" x 9' 3"
Bedroom 5	2.99 x 2.83	9' 10" x 9' 3"

The Birch | X518 P5 vt DTAV1 B19 |

This floorplan has been produced for illustrative purposes only. Room sizes shown are between arrow points as indicated on plan. The dimensions have tolerances of + or -50mm and should not be used other than for general guidance. If specific dimensions are required, enquiries should be made to the sales advisor.

ovn	oven	cyl	hot water cyclinder
h	hob	ffzr	fridge freezer
dw	dishwasher	cup'd	cupboard
ws	washing machine space	↔	measuring points

Please refer to the sales advisor for specific plot details as the illustrations shown are computer generated impressions of how the property may look so are indicative only. External details or finishes may vary on individual plots and homes may be built in either detached or attached styles depending on the development layout. Exact specifications, window styles and whether a property is left or right handed may differ from plot to plot.

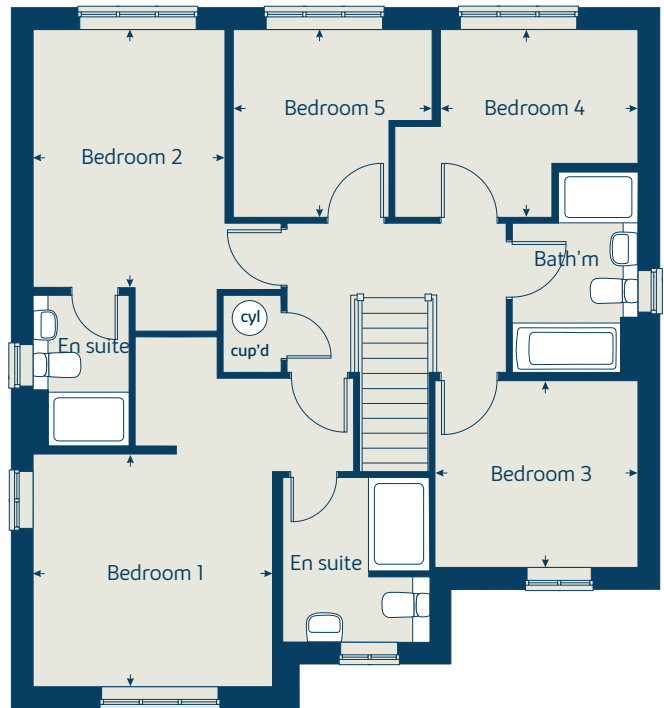
The floorplans shown are not to scale. Measurements are based on the original drawings. Slight variations may occur during construction.

Produced by the Bovis Homes Graphic Design Department.

When you have finished with this leaflet please recycle it.

DTAV1 Printed 06.2019

First floor



Ground floor

