

LIVEST WEST SHARED OWNERSHIP AT

White Cross Park

Cheriton Fitzpaine



A fantastic opportunity to purchase one of four two bedroom houses through shared ownership in Cheriton Fitzpaine.

Cheriton Fitzpaine is a lovely village with a thriving community and is situated in a rural location, yet within easy reach of the market towns of both Crediton and Tiverton, as well as the Cathedral City of Exeter.

Price start from
£82,600

for a 40% share* of
a 2 bedroom home

**No stamp duty for
first time buyers**

The prices are correct at the time of print but can be subject to change, speak to a Sales Consultant for further details.
The floor plans shown are for guidance only and are subject to change during construction. Window and door positions may vary from home to home, and some homes may be left or right handed. Please note that the carpets are not included as standard.

*Eligibility criteria. Terms and conditions apply. Prices are subject to change and are based on a 40% share of a 2 bedroom house.
Speak to our Sales Consultants for further details.

Contact us for more information

Telephone: 01752 856037

Email: newhomes@livewest.co.uk

LiveWest
A home for everyone

LiveWest
A home for everyone

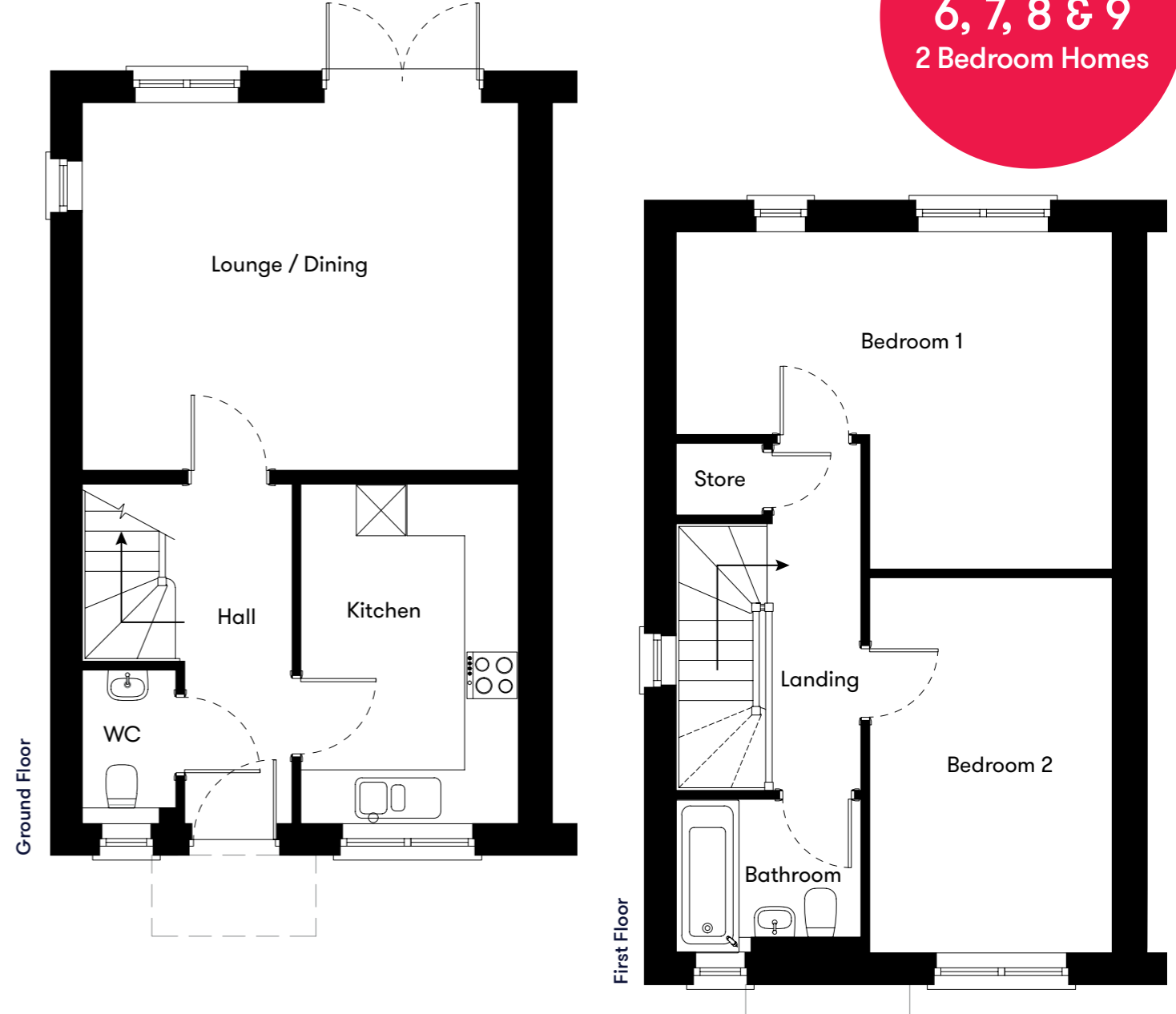
Site plan

● Plots 6, 7, 8 & 9
2 bedroom house ● LiveWest rent



Floor plan

**Plots
6, 7, 8 & 9
2 Bedroom Homes**



Plot	House type	Open Market Value	40% Share	Monthly Charge
6	2 bedroom semi detached house with 2 parking spaces	£206,500	£82,600	£265.13
7	2 bedroom semi detached house with 2 parking spaces	£210,000	£84,000	£269.50
8	2 bedroom semi detached house with 2 parking spaces	£208,000	£83,200	£267.00
9	2 bedroom semi detached house with car port + 1 parking space	£207,500	£83,000	£266.38

*Monthly rent including buildings insurance. Service charge to be confirmed.

Contact us for more information

Telephone: 01752 856037
Email: newhomes@livewest.co.uk



Contact us for more information

Telephone: 01752 856037
Email: newhomes@livewest.co.uk

