



Prices start from
£92,000
for a 40% share* of
a 2 bedroom home

**No stamp duty for
first time buyers**

The Old Fruit Farm

Norton Sub Hamdon

An exciting opportunity to purchase one of two, 2 bedroom coach houses available in the increasingly popular village of Norton Sub Hamdon.

Situated just five miles west of Yeovil and with easy access to the A303 road networks, you'll find plenty of facilities nearby.

The prices are correct at the time of print but can be subject to change, speak to a Sales Consultant for further details.
The floor plans shown are for guidance only and are subject to change during construction. Window and door positions may vary from home to home, and some homes may be left or right handed.

*Eligibility criteria. Terms and conditions apply. Prices are subject to change and are based on a 40% share of a 2 bedroom coach house.
Speak to our Sales Consultants for further details.

Contact us for more information

Telephone: 01934 526446

Email: newhomes@livewest.co.uk

LiveWest
A home for everyone

LiveWest
A home for everyone

Site plan

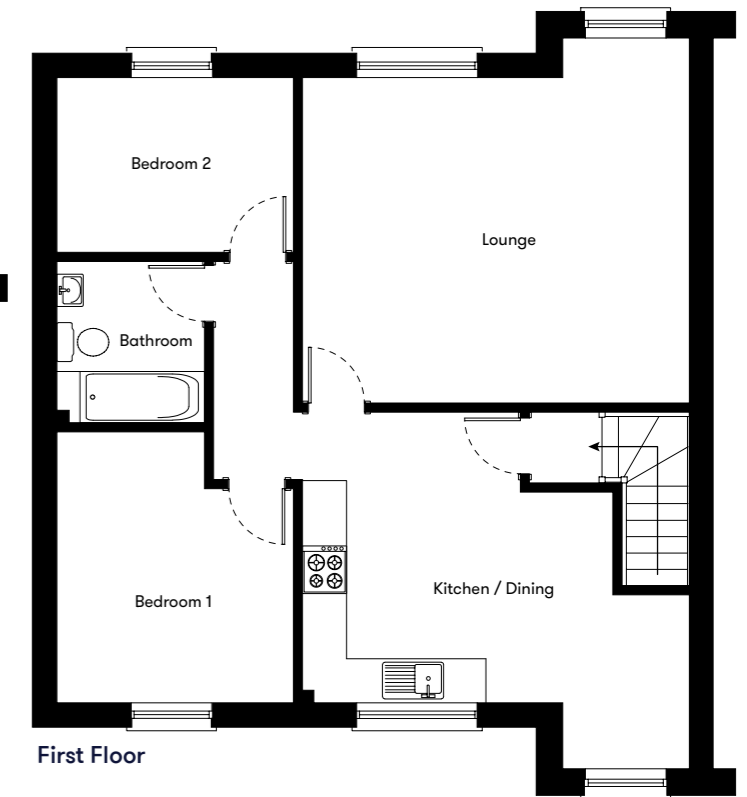
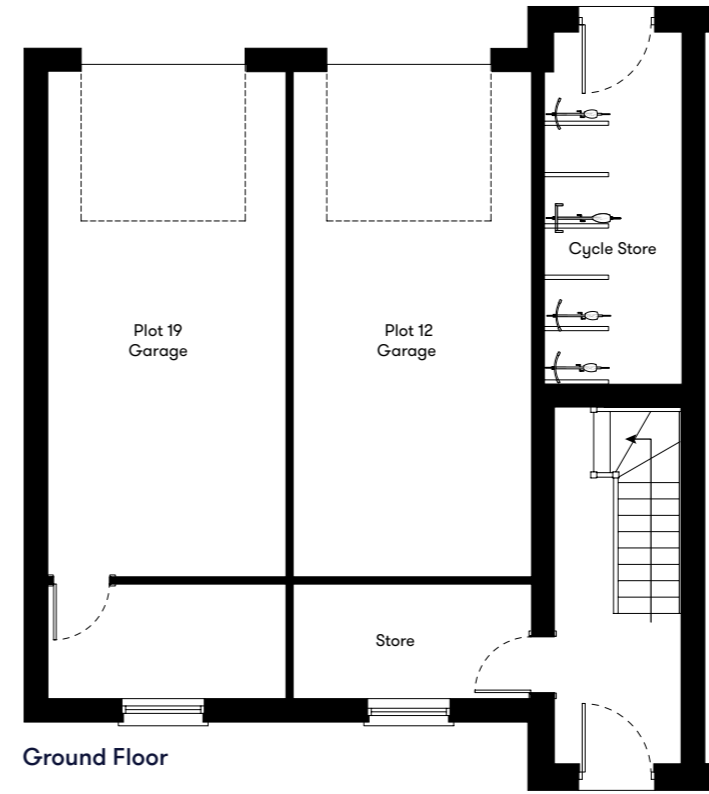
● LiveWest Shared Ownership
 Plots 11 & 12
 2 bedroom coach house

● LiveWest rented



Floor plan

**Plots
11 & 12**
 2 Bedroom
 Coach Houses



Plot	House type	Open Market Value	40% Share	Rent*
11	2 bedroom coach house with single garage and 2 parking spaces	£230,000	£92,000	£316.78
12	2 bedroom coach house with single garage and 2 parking spaces	£230,000	£92,000	£316.78

*Including buildings insurance and service charge.

Contact us for more information

Telephone: 01934 526446
 Email: newhomes@livewest.co.uk



Contact us for more information

Telephone: 01934 526446
 Email: newhomes@livewest.co.uk

