



Prices start from
£57,500
for a 25% share* of
a 2 bedroom home
**No stamp duty for
first time buyers**

The Moorings

Pucklechurch

A fantastic opportunity to purchase a home on a new development in the popular village of Pucklechurch.

The prices are correct at the time of print but can be subject to change, speak to a Sales Consultant for further details. The floor plans shown are for guidance only and are subject to change during construction. Window and door positions may vary from home to home, and some homes may be left or right handed. Please note that the carpets are not included as standard.

*Eligibility criteria. Terms and conditions apply. Prices are subject to change and are based on a 25% share of a 2 bedroom home. Speak to our Sales Consultants for further details.

Contact us for more information

Telephone: 01934 526446

Email: newhomes@livewest.co.uk

LiveWest
A home for everyone

LiveWest
A home for everyone

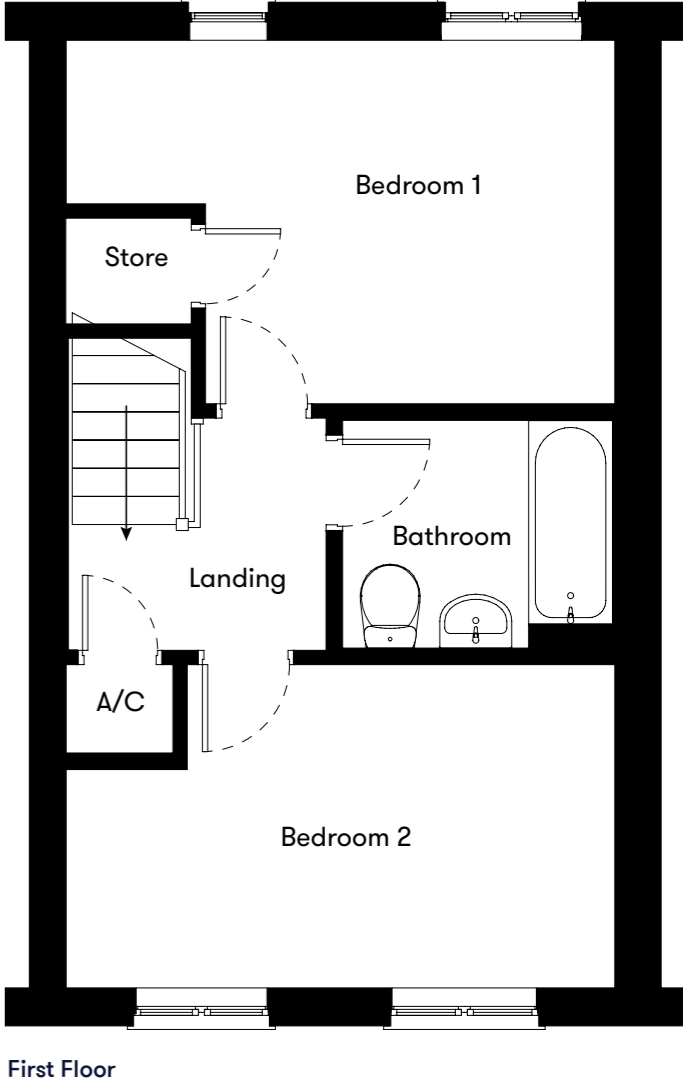
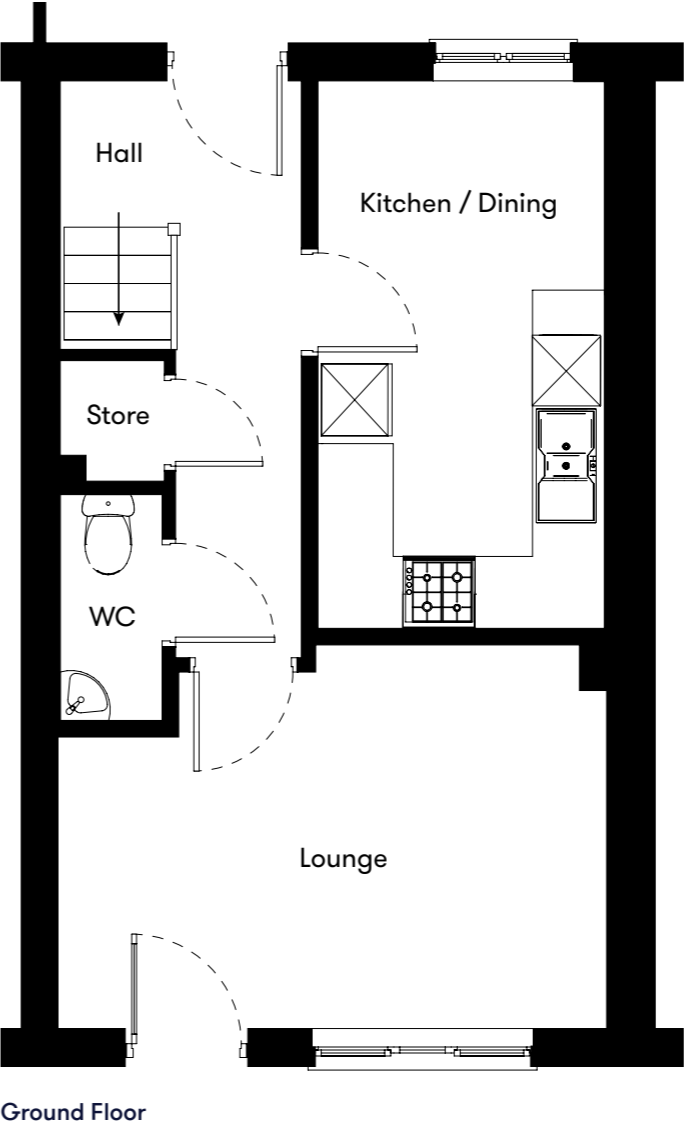
Site plan

● Plots 14, 15, 16, 20, 21, 24, 25, 28, 36, & 37
2 bedroom house ● LiveWest rent



Floor plan

Plots
14, 15, 16, 20,
21, 24, 25, 28,
36 & 37
2 bedroom house



Plot	House type	Open Market Value	25% Share	monthly charge
14, 15, 16, 24, 28	2 bedroom mid terrace house with 1 parking space	£230,000	£57,500	£422.98
20, 21, 36, 37	2 bedroom mid terrace house with 1 parking space	£232,500	£58,125	£427.28

*Including rent, buildings insurance, service charge and management fee.

Contact us for more information

Telephone: 01934 526446
Email: newhomes@livewest.co.uk



Contact us for more information

Telephone: 01934 526446
Email: newhomes@livewest.co.uk

