



Price start from

£78,600

for a 40% share* of
a 2 bedroom home

**No stamp duty for
first time buyers**

Tews Lane

Barnstaple

LiveWest are offering local people a fantastic opportunity to purchase one of 2 new homes for shared ownership in Barnstaple.

Situated off the Roundswell Business Park roundabout and a short drive to the market town of Barnstaple, where you will find a host of amenities such as the renowned Pannier Market.

The prices are correct at the time of print but can be subject to change, speak to a Sales Consultant for further details.
The floor plans shown are for guidance only and are subject to change during construction. Window and door positions may vary from home to home, and some homes may be left or right handed. Please note that the carpets are not included as standard.

*Eligibility criteria. Terms and conditions apply. Prices are subject to change and are based on a 40% share of a 2 bedroom house.
Speak to our Sales Consultants for further details.

Contact us for more information

Telephone: 01752 856037

Email: newhomes@livewest.co.uk

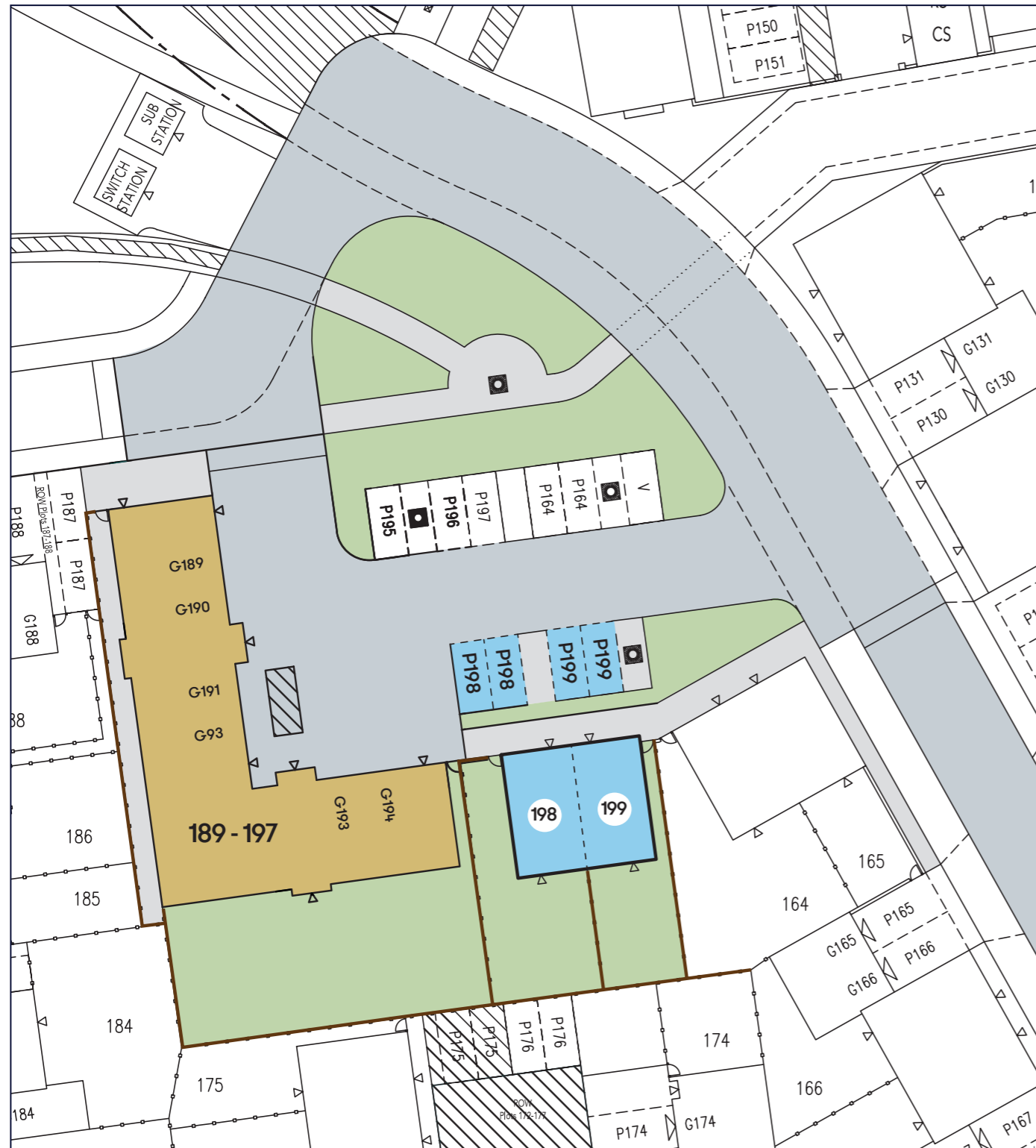
LiveWest
A home for everyone

These homes are an excellent option for those who are looking to commute with good transport links via the North Devon Link Road (A361) and the M5.

LiveWest
A home for everyone

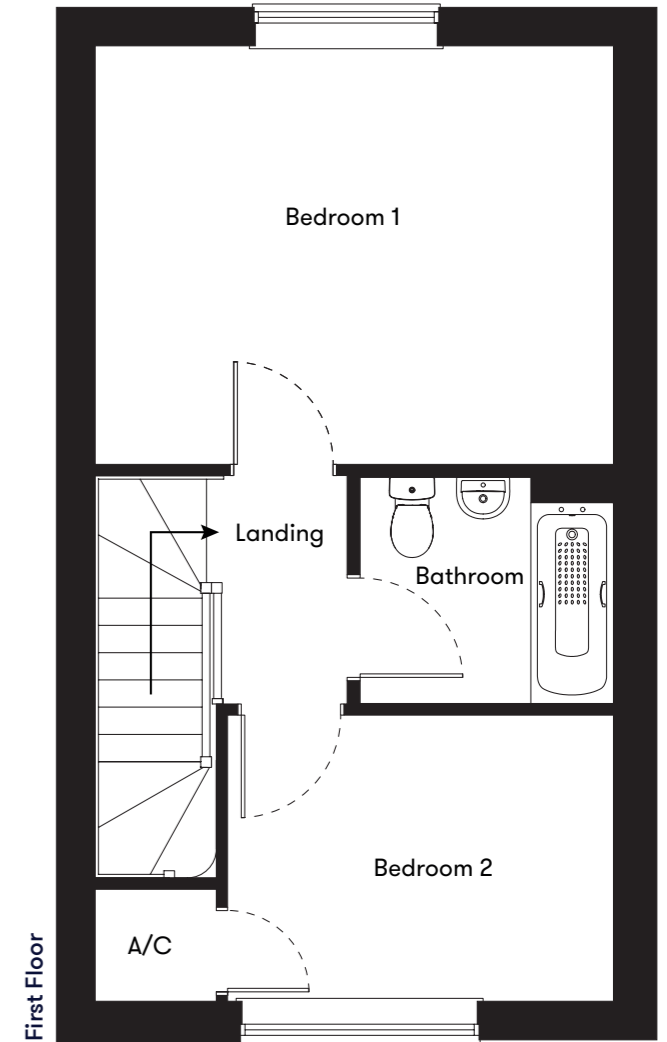
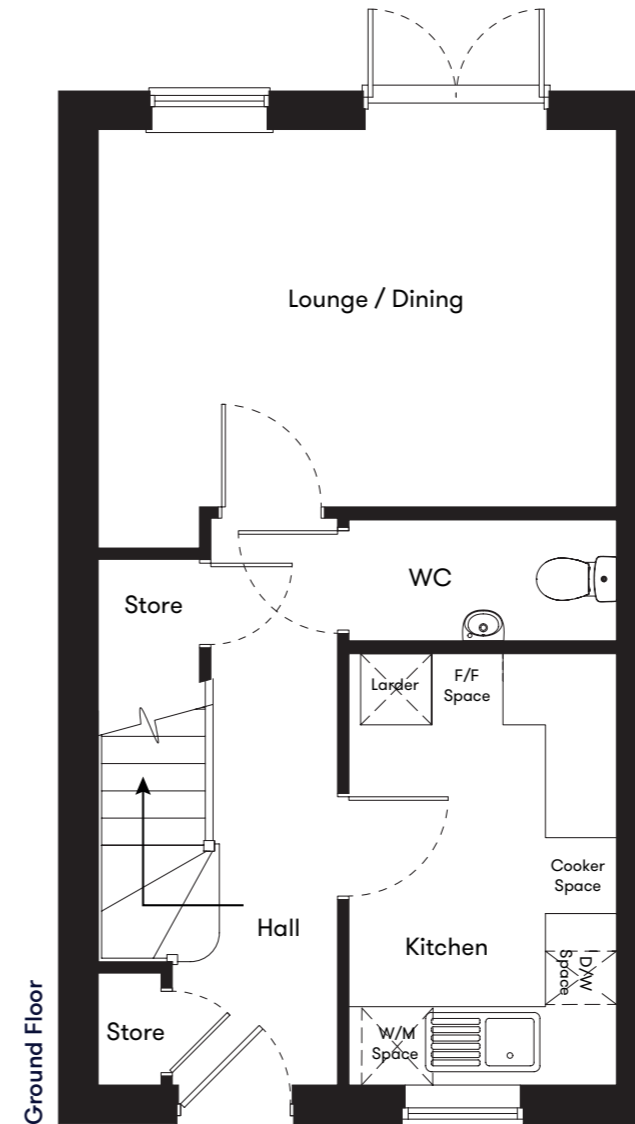
Site plan

● Plots 198 & 199
 2 bedroom house
 ● LiveWest affordable rent



Floor plan

**Plots
198 & 199**
 2 Bedroom Houses



Plot	House type	Open Market Value	40% Share	Rent*
198	2 bedroom semi detached house with 2 parking spaces	£199,000	£79,600	£255.81
199	2 bedroom semi detached house with 2 parking spaces	£196,500	£78,600	£252.96

*Including buildings insurance. Service charge to be confirmed.

Contact us for more information

Telephone: 01752 856037
 Email: newhomes@livewest.co.uk



Contact us for more information

Telephone: 01752 856037
 Email: newhomes@livewest.co.uk

