



Sherford

South Hams

A fantastic opportunity to purchase a brand new home in the popular town of Sherford. Sherford is located on the Eastern outskirts of the city of Plymouth. Once complete, the town will have three primary schools and a secondary school, and variety of community facilities which include: a town centre, health centre, library, theatre, sports centre and community park.

With a range of houses and a ground floor apartment available, your new home could be closer than you think.

Price start from

£91,600

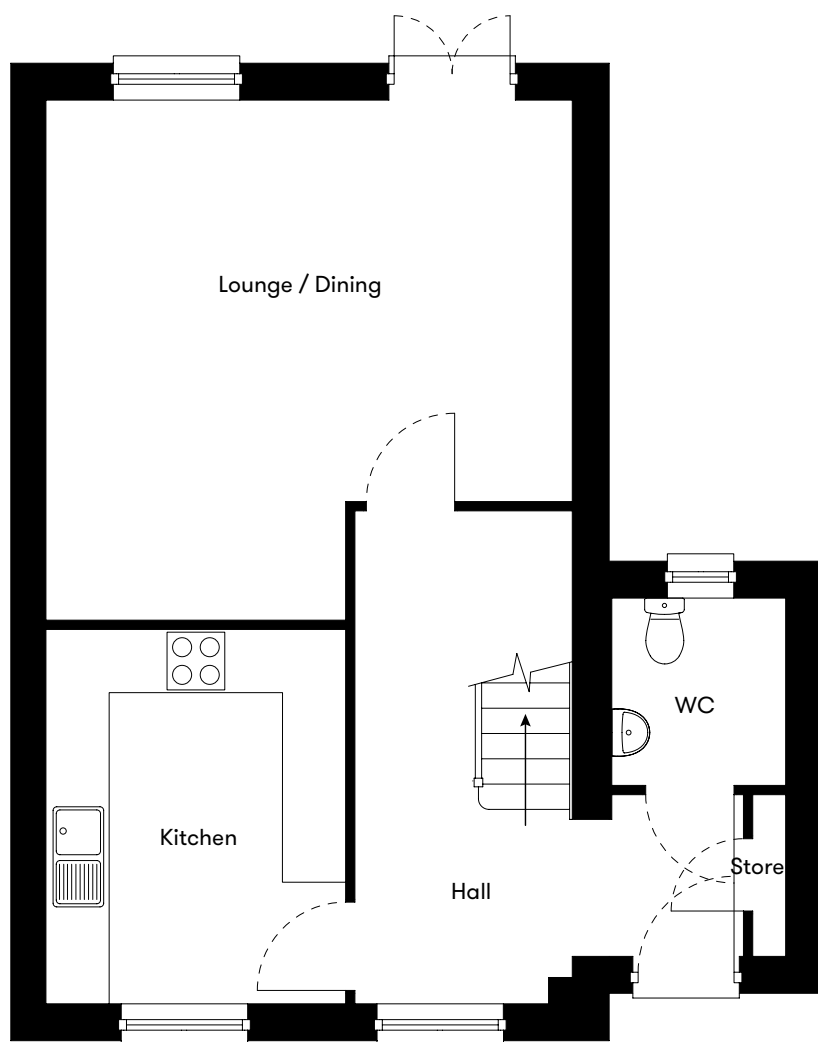
for a 40% share* of
a 2 bedroom home

**No stamp duty for
first time buyers**

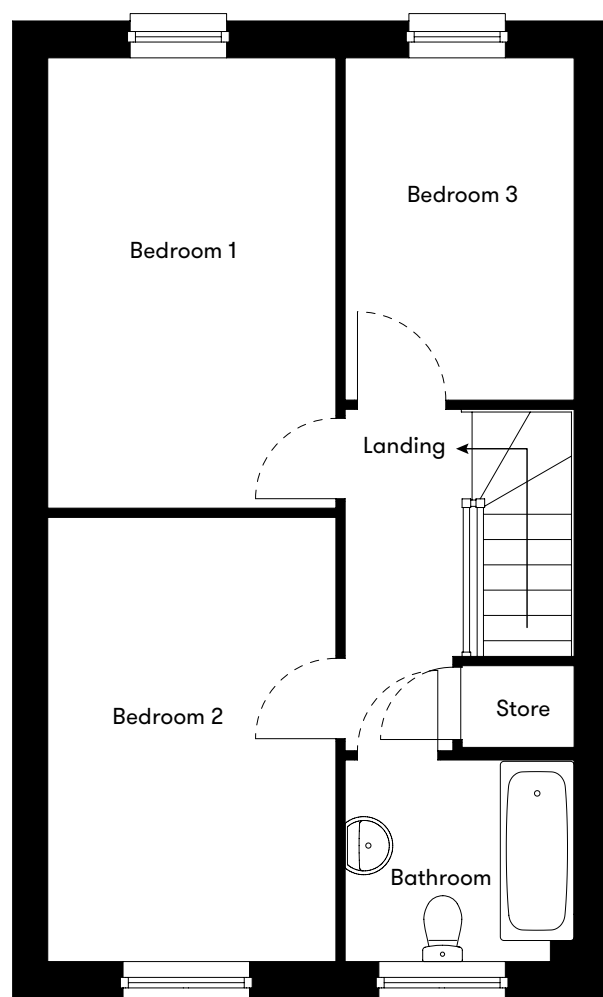
LiveWest
A home for everyone

Floor plan

Plots
151, 152,
153 & 154
3 Bedroom House



Ground Floor



First Floor

Plot	House type	Open Market Value	40% Share	Rent*
151	3 bedroom semi detached house with 1 parking space	£257,000	£102,800	£328.72
152	3 bedroom semi detached house with 1 parking space	£259,000	£103,600	£331.22
153	3 bedroom semi detached house with 1 parking space	£255,000	£102,000	£326.22
154	3 bedroom semi detached house with 1 parking space	£255,000	£102,000	£326.22

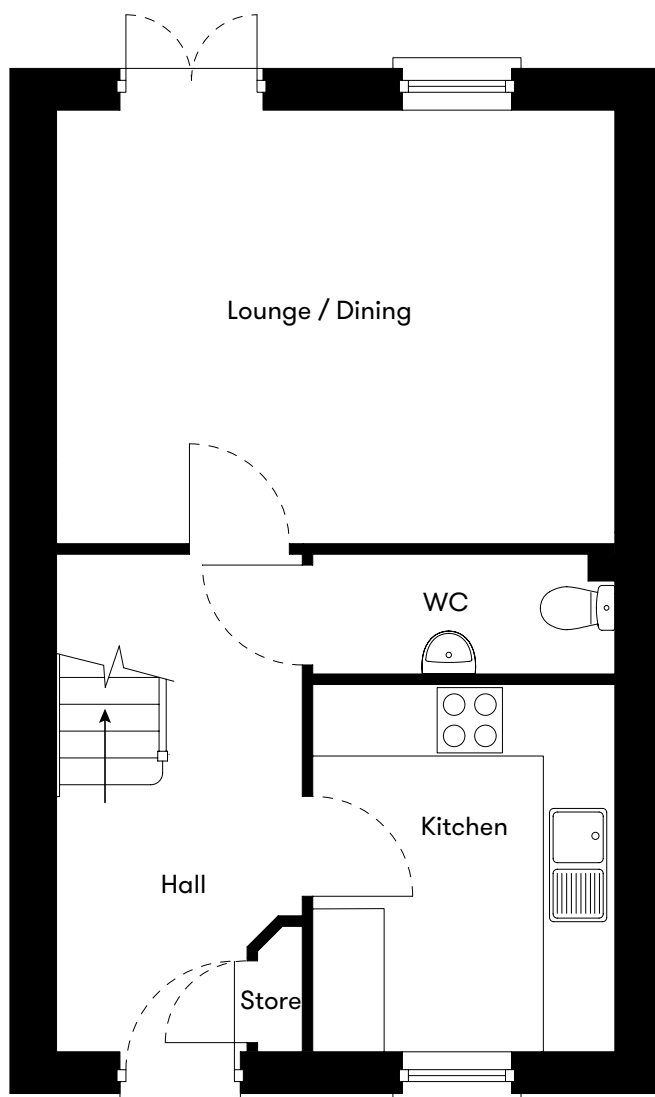
Plot	House type	Open Market Value	75% Share	Rent*
151	3 bedroom semi detached house with 1 parking space	£257,000	£192,750	£141.32
152	3 bedroom semi detached house with 1 parking space	£259,000	£194,259	£142.37
153	3 bedroom semi detached house with 1 parking space	£255,000	£191,250	£140.28
154	3 bedroom semi detached house with 1 parking space	£255,000	£191,250	£140.28

*Including buildings insurance, Service charge to be confirmed.

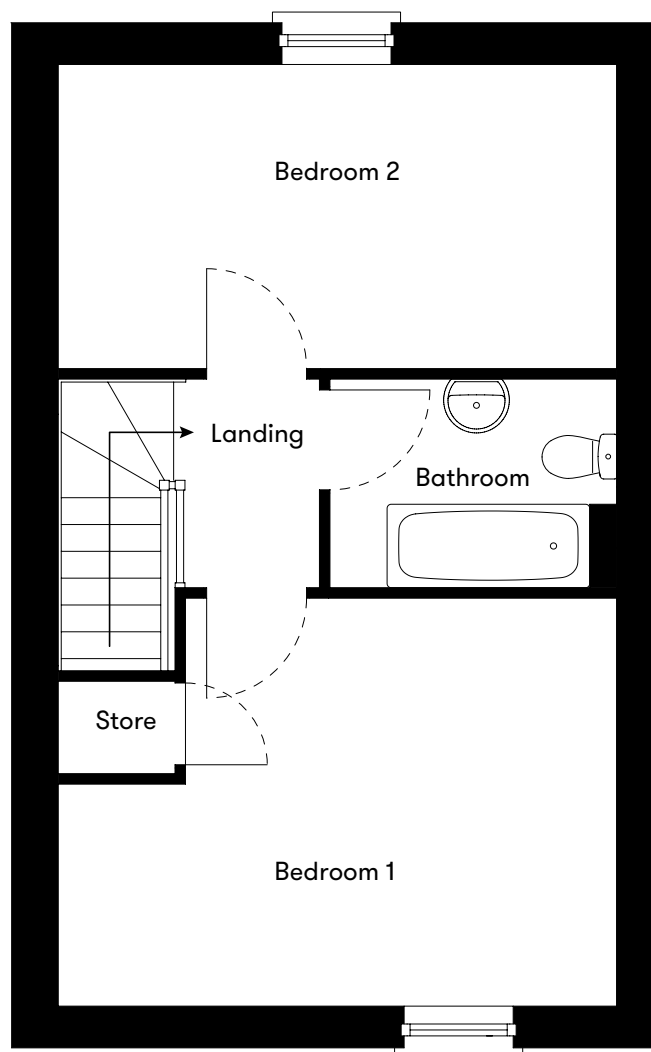


Floor plan

Plots
188 & 191
2 Bedroom House



Ground Floor



First Floor

Plot	House type	Open Market Value	40% Share	Rent*
188	2 bedroom semi detached house with 1 garage	£231,000	£92,400	£295.75
191	2 bedroom semi detached house with 1 parking space	£229,000	£91,600	£293.25

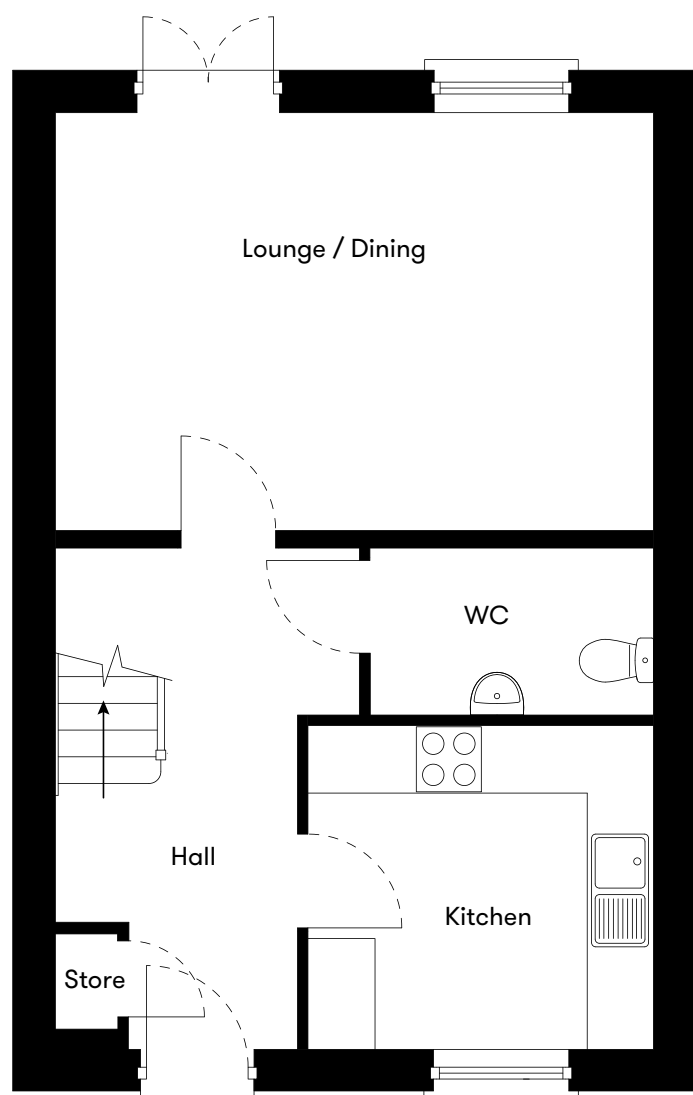
Plot	House type	Open Market Value	75% Share	Rent*
188	2 bedroom semi detached house with 1 garage	£231,000	£173,250	£127.31
191	2 bedroom semi detached house with 1 parking space	£229,000	£171,750	£126.27

*Including buildings insurance, Service charge to be confirmed.

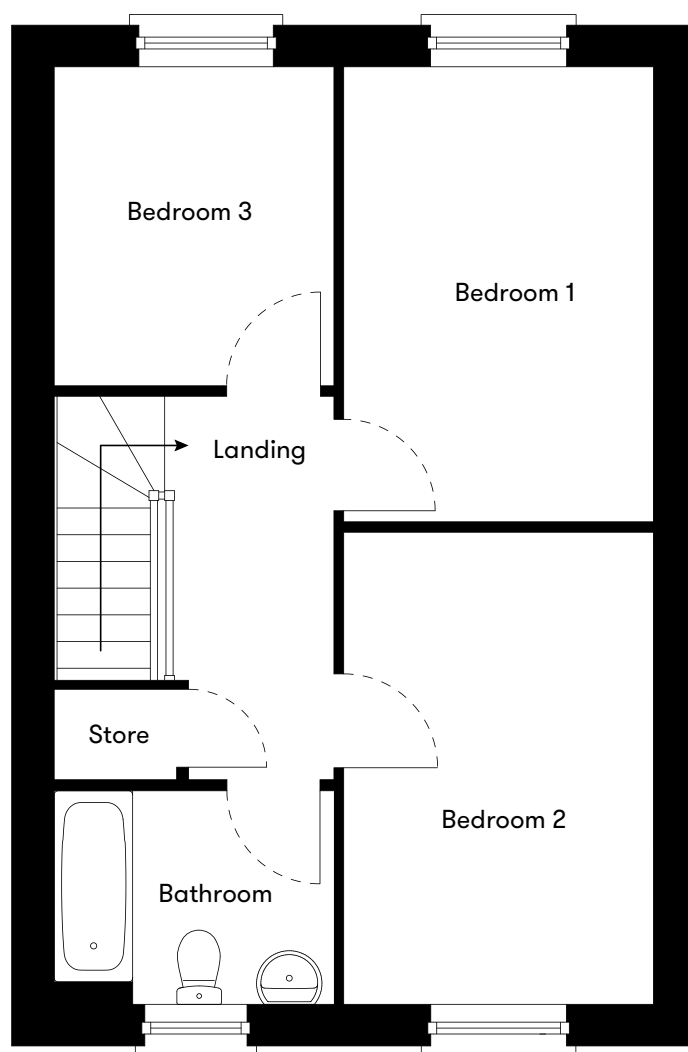


Floor plan

Plot 189
3 Bedroom House



Ground Floor



First Floor

Plot	House type	Open Market Value	40% Share	Rent*
189	3 bedroom semi detached house with 1 parking space	£250,000	£100,000	£319.97

Plot	House type	Open Market Value	75% Share	Rent*
189	3 bedroom semi detached house with 1 parking space	£250,000	£187,500	£137.68

*Including buildings insurance, Service charge to be confirmed.



Site plan

3 bedroom houses
Plots 151, 152, 153 & 154

2 bedroom houses
Plots 188 & 191

3 bedroom house
Plot 189



The prices are correct at the time of print but can be subject to change, speak to a Sales Consultant for further details.

The floor plans shown are for guidance only and are subject to change during construction. Window and door positions may vary from home to home, and some homes may be left or right handed.

*Eligibility criteria. Terms and conditions apply. Prices are subject to change and are based on a 40% or 75% share of a 2 or 3 bedroom home. Speak to our Sales Consultants for further details.

Contact us for more information

Telephone: 01752 856037

Email: newhomes@livewest.co.uk

LiveWest
A home for everyone