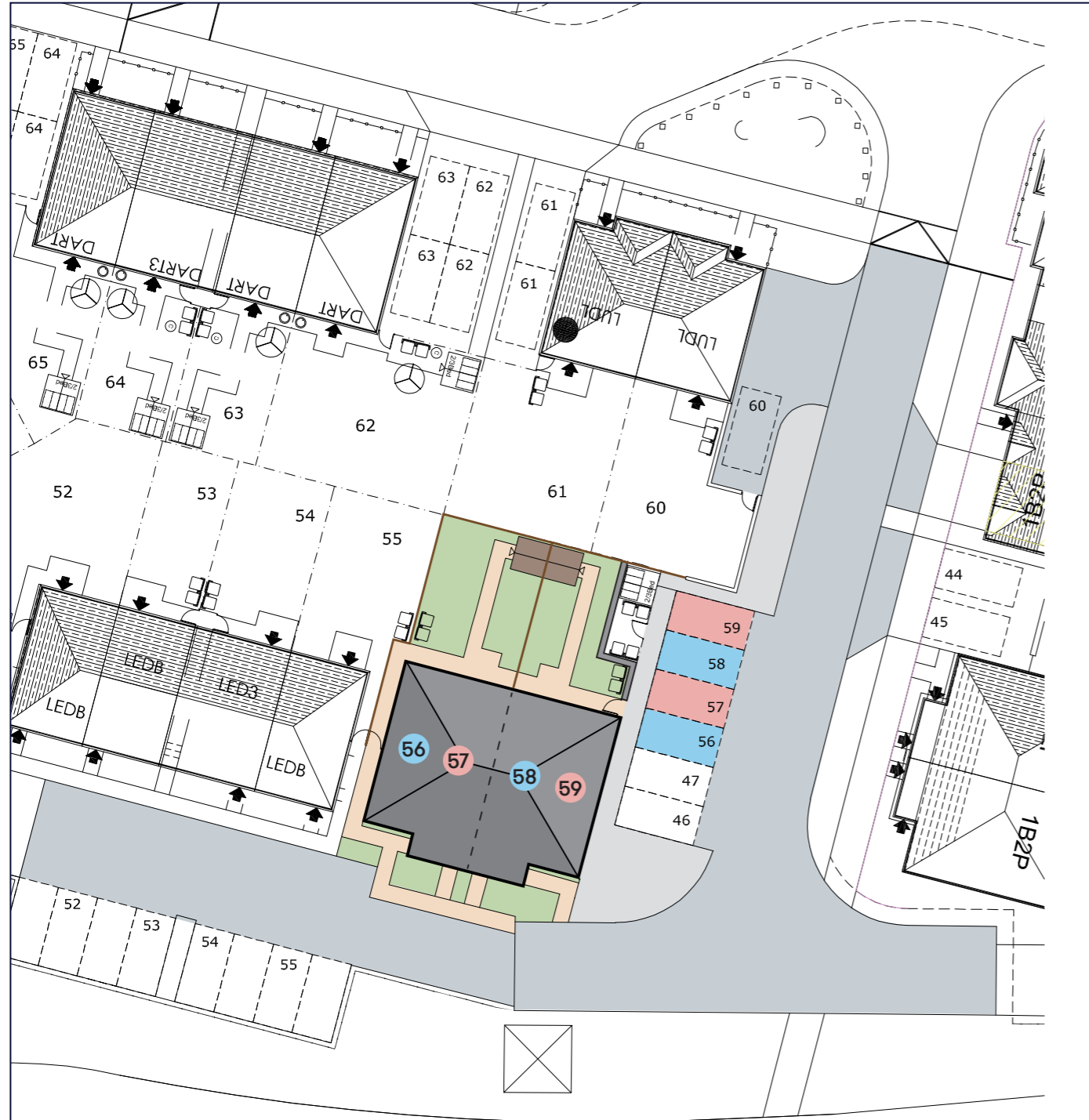


# Site plan

● Plots 56 & 58 SOLD  
1 bedroom ground floor flat

● Plots 57 & 59  
1 bedroom first floor flat



The prices are correct at the time of print but can be subject to change, speak to a Sales Consultant for further details.  
The floor plans shown are for guidance only and are subject to change during construction. Window and door positions may vary from home to home, and some homes may be left or right handed. Please note that the carpets are not included as standard.

\*Eligibility criteria. Terms and conditions apply. Prices are subject to change and are based on a 40% share of a 1 bedroom flat.  
Speak to our Sales Consultants for further details.



Price start from  
**£69,000**  
for a 40% share\* of  
a 1 bedroom home  
**No stamp duty for  
first time buyers**

## Saxon Brook Bussel Close

A fantastic opportunity to purchase a new one bedroom apartment on the Saxon Brook development in the picturesque village of Pinhoe.

This development is ideally situated on the outskirts of Exeter with easy access to all the amenities the city of Exeter can offer and the A38 expressway.

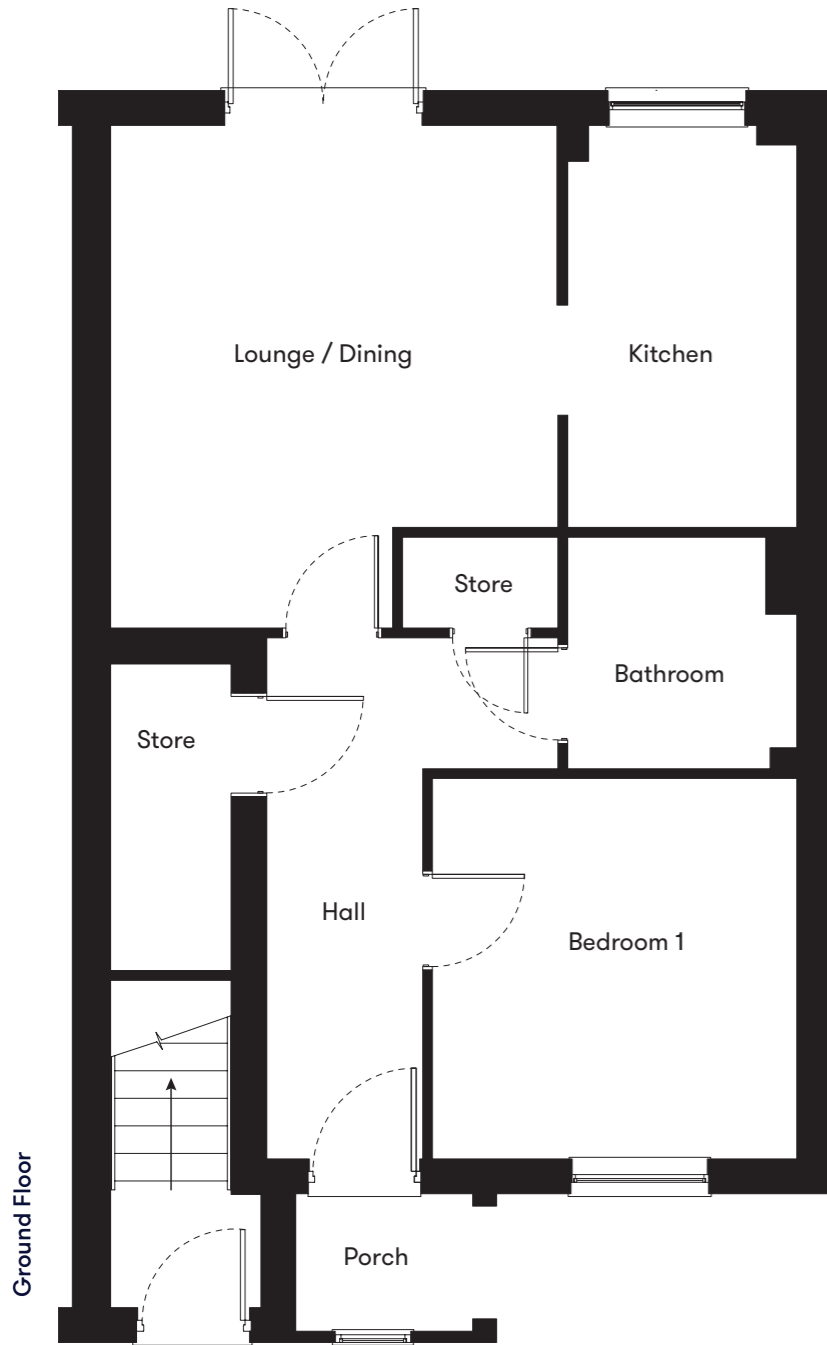
Contact us for more information

Telephone: 01752 856037  
Email: [newhomes@livewest.co.uk](mailto:newhomes@livewest.co.uk)

**LiveWest**  
A home for everyone

**LiveWest**  
A home for everyone

# Floor plan

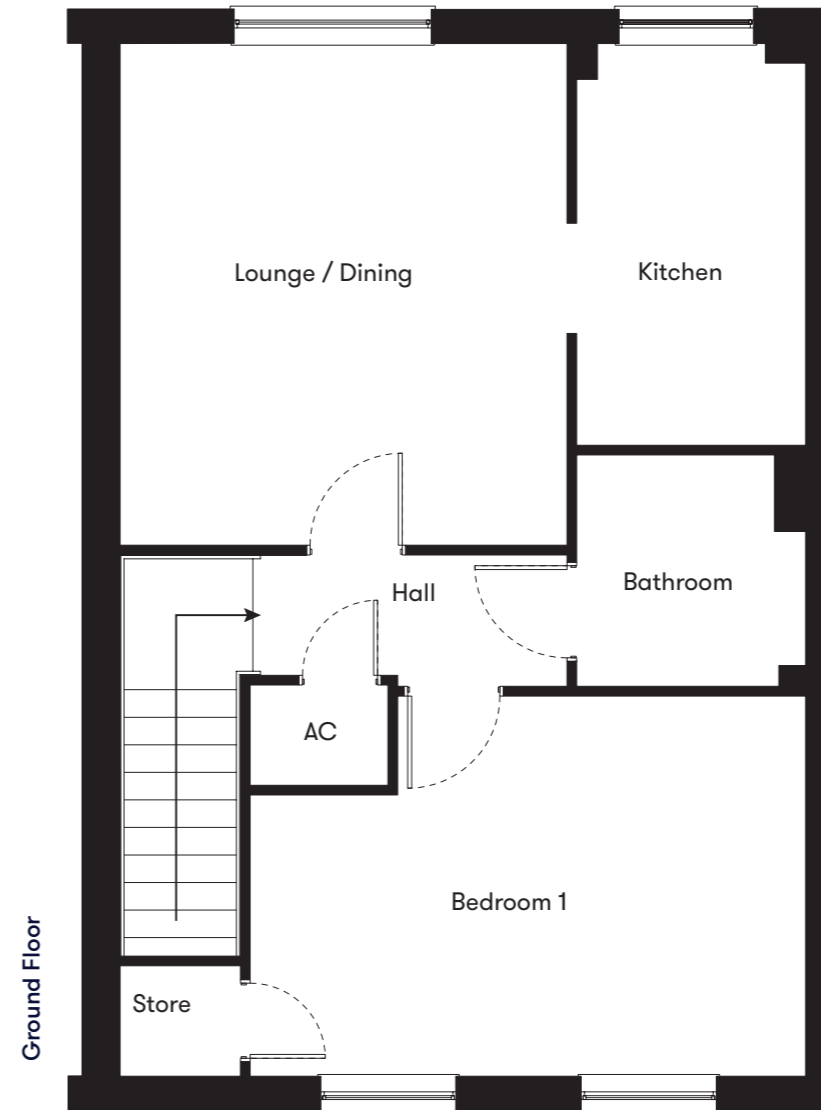


Plots  
56 & 58  
1 Bedroom  
Ground Floor Flat

| Plot | House type                                       | Open Market Value | 40% Share | Rent* |
|------|--|-------------------|-----------|-------|
| 56   | 1 bedroom ground floor flat with 1 parking space | -                 | -         | SOLD  |
| 58   | 1 bedroom ground floor flat with 1 parking space | -                 | -         | SOLD  |

\*Including buildings insurance and service charge.

# Floor plan



Plots  
57 & 59  
1 Bedroom  
First Floor Flat

| Plot | House type                                      | Open Market Value | 40% Share | Rent*   |
|------|---|-------------------|-----------|---------|
| 57   | 1 bedroom first floor flat with 1 parking space | £172,500          | £69,000   | £248.35 |
| 59   | 1 bedroom first floor flat with 1 parking space | £172,500          | £69,000   | £248.35 |

\*Including buildings insurance and service charge.

Contact us for more information

Telephone: 01752 856037  
Email: [newhomes@livewest.co.uk](mailto:newhomes@livewest.co.uk)



Contact us for more information

Telephone: 01752 856037  
Email: [newhomes@livewest.co.uk](mailto:newhomes@livewest.co.uk)

