



Prices start from
£88,000
for a 40% share* of
a 2 bedroom home
**No stamp duty for
first time buyers**

Porthgwari

St Clare, Penzance

A fantastic opportunity to purchase a 2 bedroom property in Penzance.

Famous for its pirates, well the singing variety anyway, Penzance is a historic port on the south facing shores of Mount's Bay. One of the striking things about the town is the abundance of palm trees and gardens full of sub-tropical plants, a sure sign that you have arrived somewhere unique made even more special by the sight of St Michael's Mount.

The prices are correct at the time of print but can be subject to change, speak to a Sales Consultant for further details.
The floor plans shown are for guidance only and are subject to change during construction. Window and door positions may vary from home to home, and some homes may be left or right handed.

*Eligibility criteria. Terms and conditions apply. Prices are subject to change and are based on a 40% share of a 2 bedroom house. Speak to our Sales Consultants for further details.

Computer generated image is for illustration purposes only.

Contact us for more information

Telephone: 01752 856037

Email: newhomes@livewest.co.uk

LiveWest
A home for everyone

Wander the town's streets and you'll come across the fabulously decorated Egyptian House, the statue of local hero Sir Humphry Davy (pioneer of mine safety) and art galleries, book sellers and new age shops which add a slightly bohemian feel to the town.

LiveWest
A home for everyone

Site plan

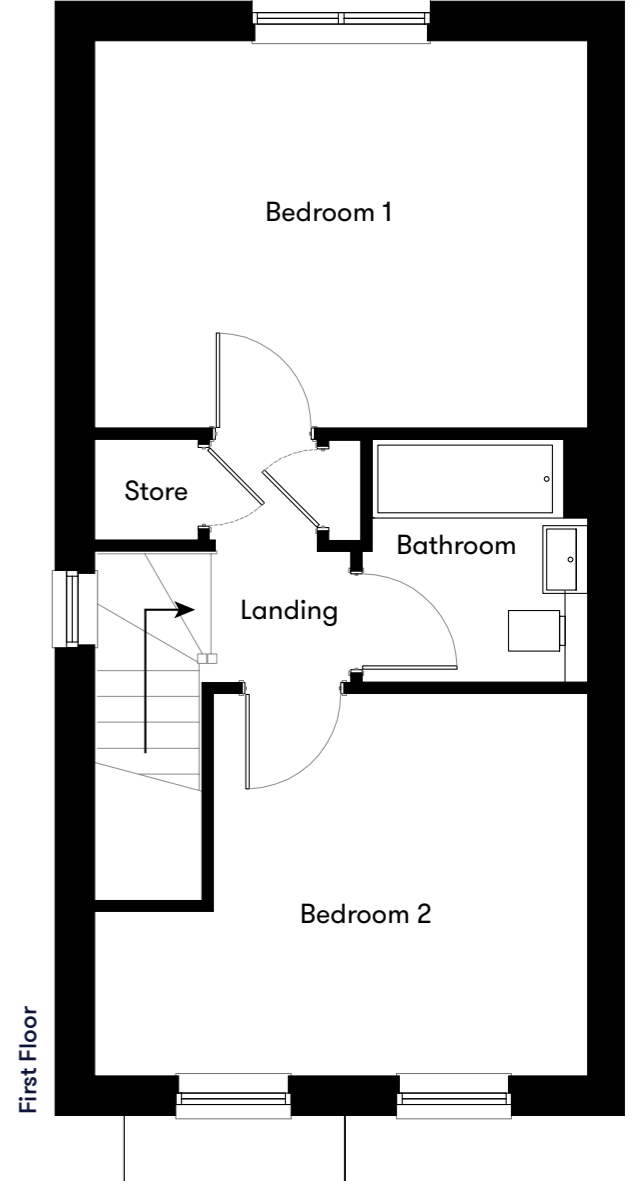
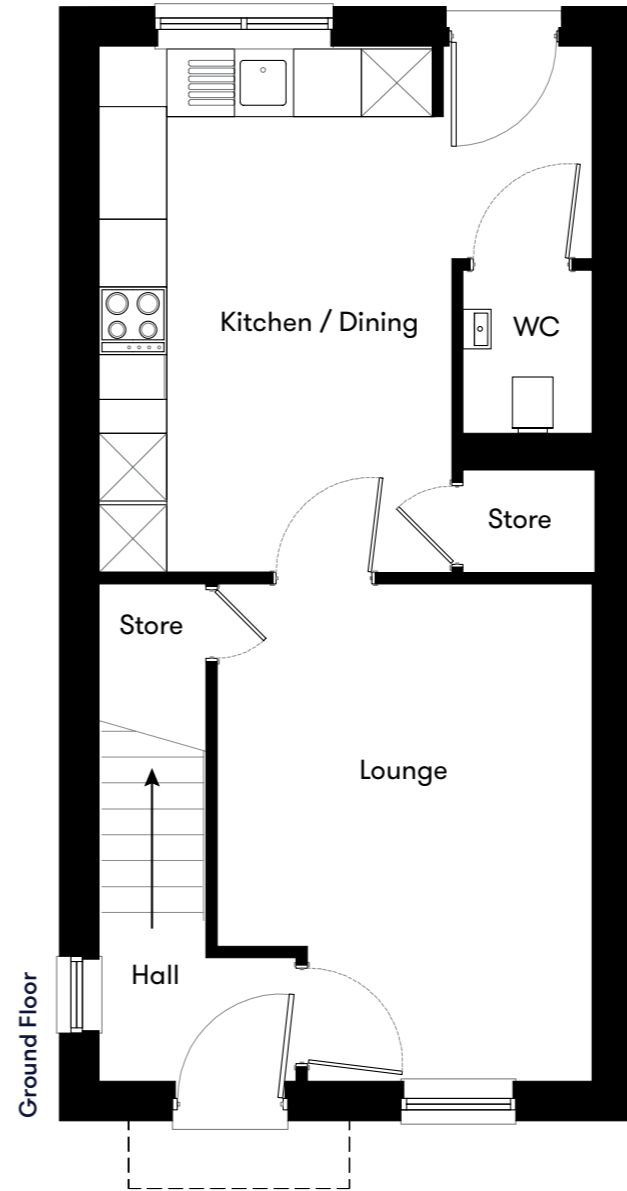
● Plots 72 & 73
 2 bedroom house

● LiveWest rented



Floor plan

**Plots
64 & 65**
 2 Bedroom Houses



Plot	House type	Open Market Value	40% Share	Rent*
64	2 bedroom semi detached house with 2 parking spaces	£220,000	£88,000	£303.83
65	2 bedroom semi detached house with 2 parking spaces	£220,000	£88,000	£303.83

*Including buildings insurance and service charge.

Contact us for more information

Telephone: 01752 856037
 Email: newhomes@livewest.co.uk



Contact us for more information

Telephone: 01752 856037
 Email: newhomes@livewest.co.uk

