

Photos are of a previous plot, not of actual properties.

The prices are correct at the time of print but can be subject to change, speak to a Sales Consultant for further details.  
The floor plans shown are for guidance only and are subject to change during construction. Window and door positions may vary from home to home, and some homes may be left or right handed.

\*Eligibility criteria. Terms and conditions apply. Prices are subject to change and are based on a 35% share of a 2 bedroom house.  
Speak to our Sales Consultants for further details.

Contact us for more information

Telephone: 01752 856037

Email: [newhomes@livewest.co.uk](mailto:newhomes@livewest.co.uk)

**LiveWest**  
A home for everyone

Chulmleigh has a strong community and welcoming feel to it, hosting a variety of musical and theatrical events and has a range of welcoming inns the whole family can enjoy.

**LiveWest**  
A home for everyone



Price start from  
**£60,375**  
for a 35% share\* of  
a 2 bedroom home

**No stamp duty for  
first time buyers**

## Ladywell Meadows Chulmleigh

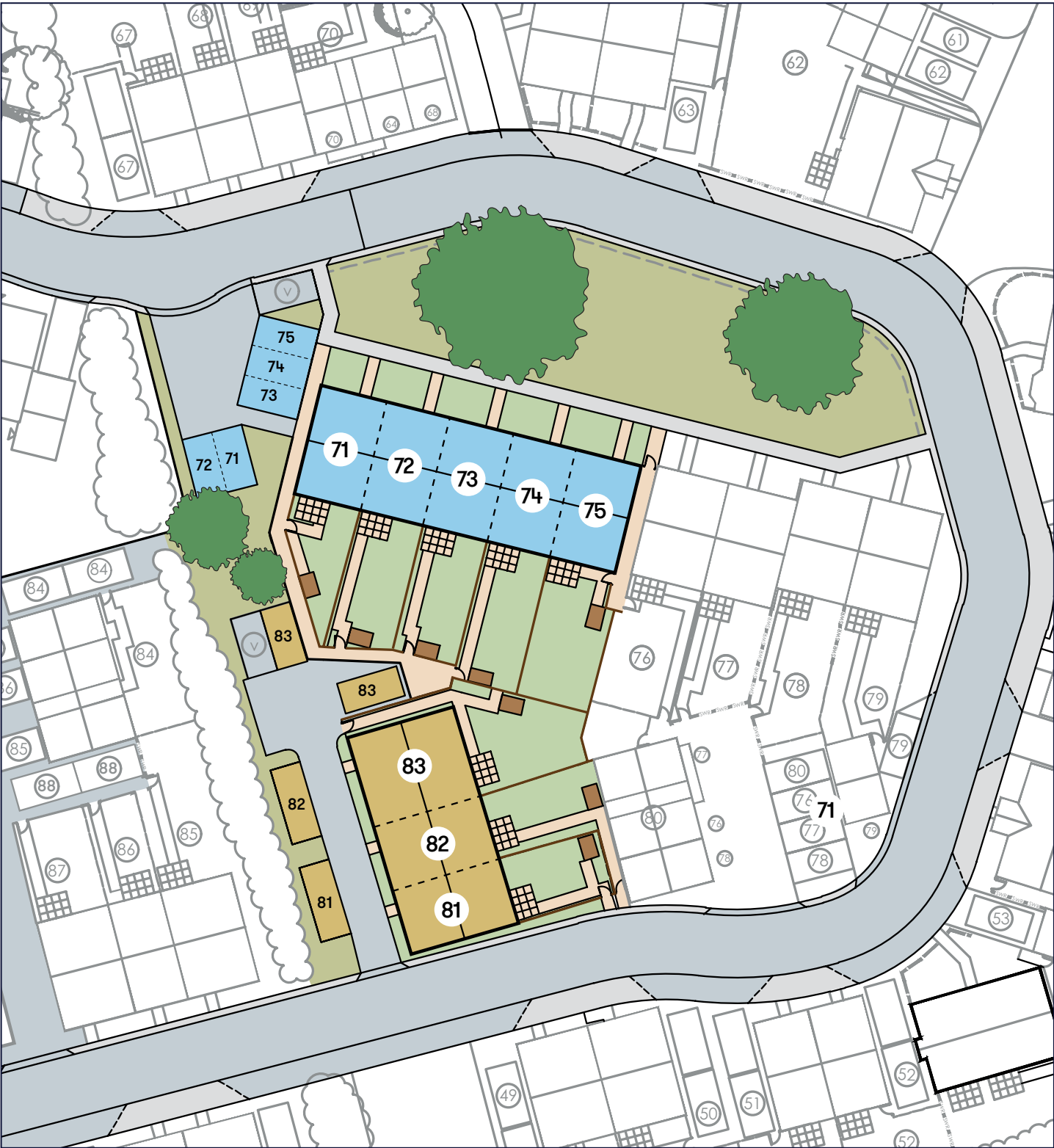
A fantastic opportunity for local people to purchase a new home in the pretty village of Chulmleigh.

Chulmleigh is situated within a conservation area, and has good links to Exeter and Barnstaple via the A377 and the historical Tarka Line.

# Site plan

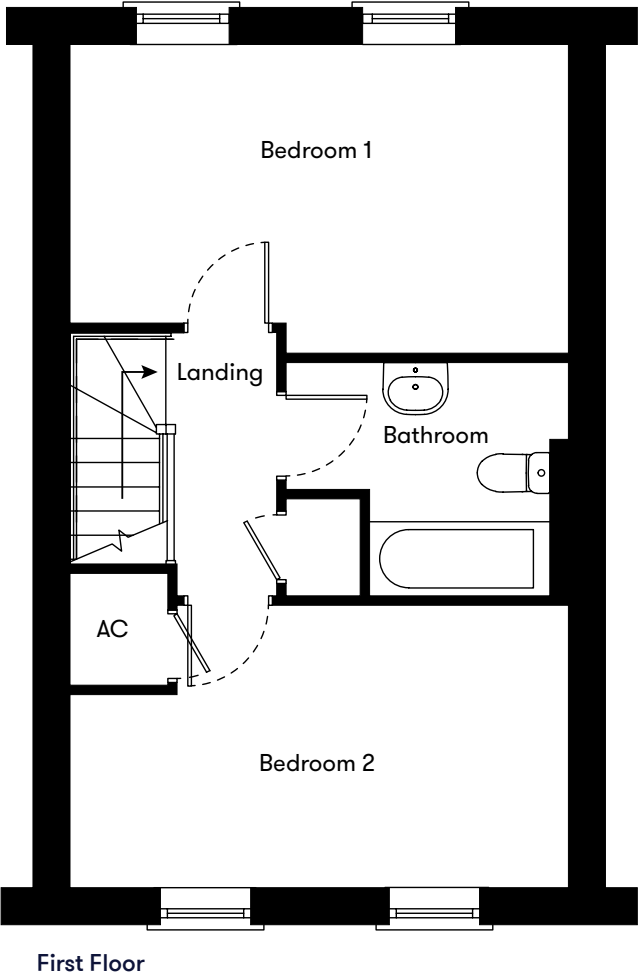
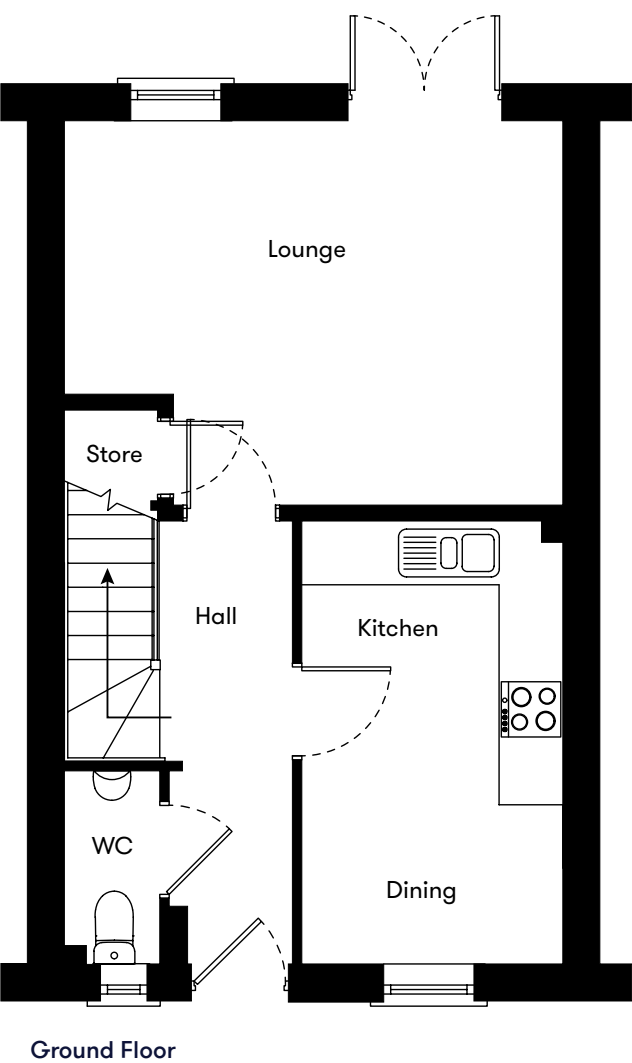
Plots 71, 72, 73, 74 & 75  
2 bedroom house

LiveWest rent



# Floor plan

Plots  
71, 72, 73  
74 & 75  
2 Bedroom House



Plot	House type	Open Market Value	35% Share	Monthly Charge
71	2 bedroom end terrace house with 1 parking space	-	-	RESERVED
72	2 bedroom mid terrace house with 1 parking space	£172,500	£60,375	£264.50
73	2 bedroom mid terrace house with 1 parking space	£172,500	£60,375	£264.50
74	2 bedroom mid terrace house with 1 parking space	-	-	RESERVED
75	2 bedroom end terrace house with 1 parking space	-	-	RESERVED

\*Including rent, buildings insurance, service charge and management fee.

Contact us for more information

Telephone: 01752 856037  
Email: newhomes@livewest.co.uk



Contact us for more information

Telephone: 01752 856037  
Email: newhomes@livewest.co.uk

