

# Site plan

- 2 bedroom houses  
Plots 101, 102 & 106
- 4 bedroom house  
Plot 103
- LiveWest  
Shared Ownership
- LiveWest rented



The prices are correct at the time of print but can be subject to change, speak to a Sales Consultant for further details.  
The floor plans shown are for guidance only and are subject to change during construction. Window and door positions may vary from home to home, and some homes may be left or right handed.

\*Eligibility criteria. Terms and conditions apply. Prices are subject to change and are based on a 40% share of a 2 or 4 bedroom home. Speak to our Sales Consultants for further details.



Price start from  
**£96,600**  
for a 40% share\* of  
a 2 bedroom home

**No stamp duty for  
first time buyers**

## Kings Reach

### Ottery St Mary

A fantastic opportunity to purchase a 2 or 4 bedroom home in the delightful Kings Reach development located in the village of Ottery St Mary.

Ottery St Mary offers a variety of local amenities including supermarket, schools, local shops and restaurants. The city of Exeter is only a short journey away where there is a further large selection of high street and larger chain stores.

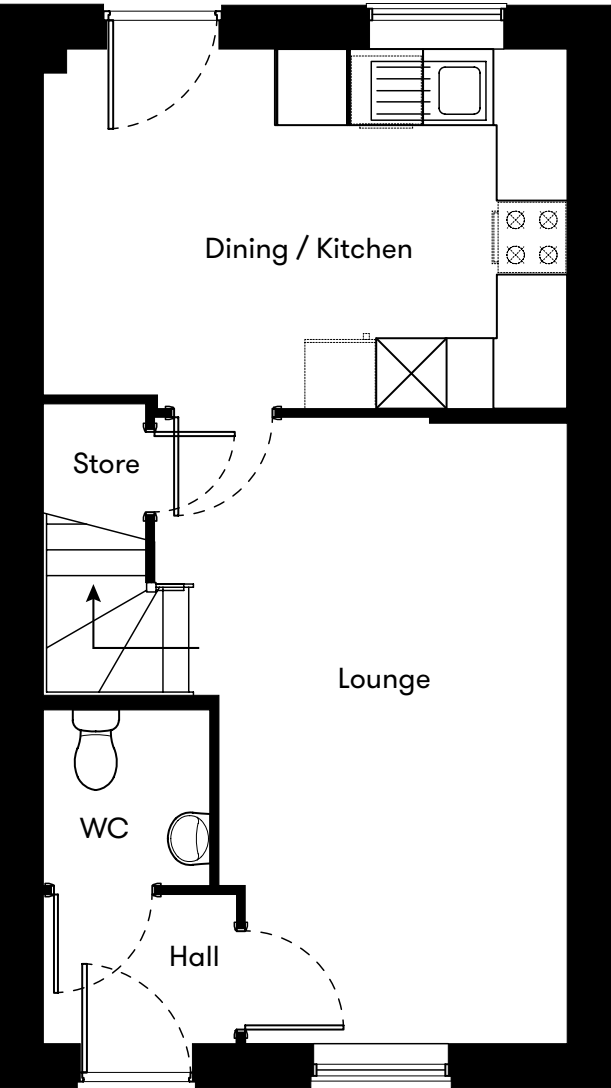
Contact us for more information

Telephone: 01752 856037  
Email: [newhomes@livewest.co.uk](mailto:newhomes@livewest.co.uk)

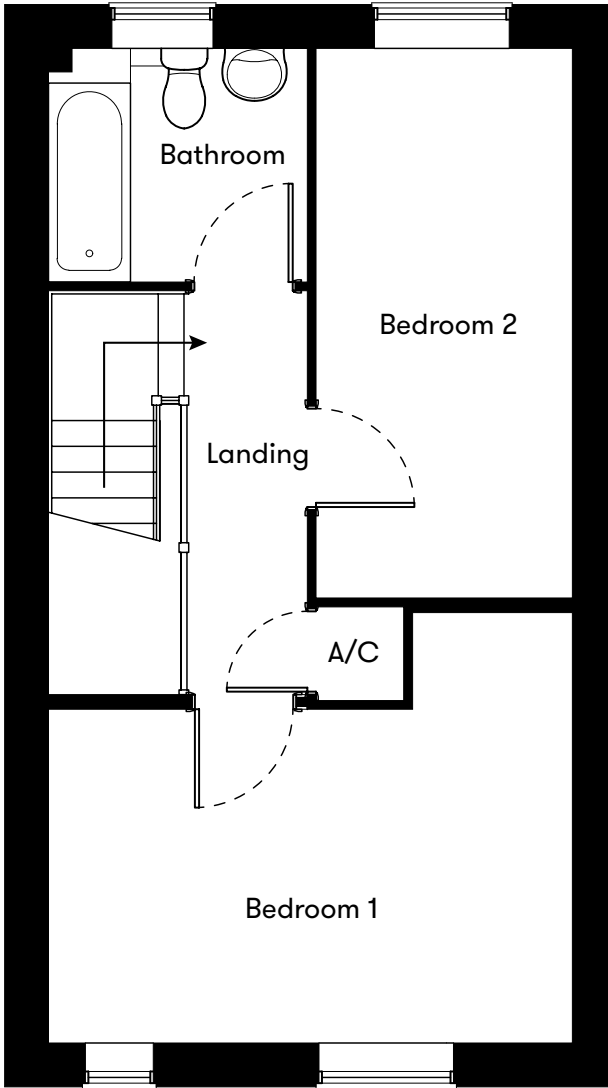
**LiveWest**  
A home for everyone

**LiveWest**  
A home for everyone

Floor plan



Ground Floor



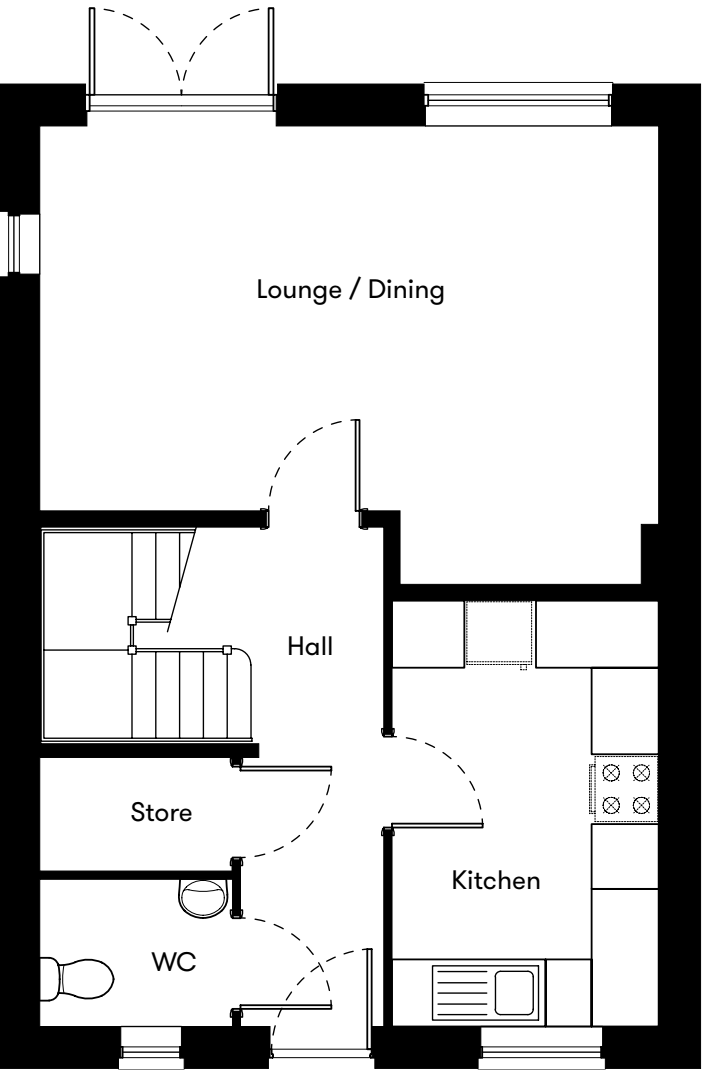
First Floor

| Plot | House type  | Open Market Value | 40% Share | Rent*   |
|------|---|-------------------|-----------|---------|
| 101  | 2 bedroom semi detached house with 2 parking spaces | £246,500          | £98,600   | £315.13 |
| 102  | 2 bedroom semi detached house with 2 parking spaces | £246,500          | £98,600   | £315.13 |
| 106  | 2 bedroom mid terraced house with 2 parking spaces  | £241,500          | £96,600   | £308.88 |

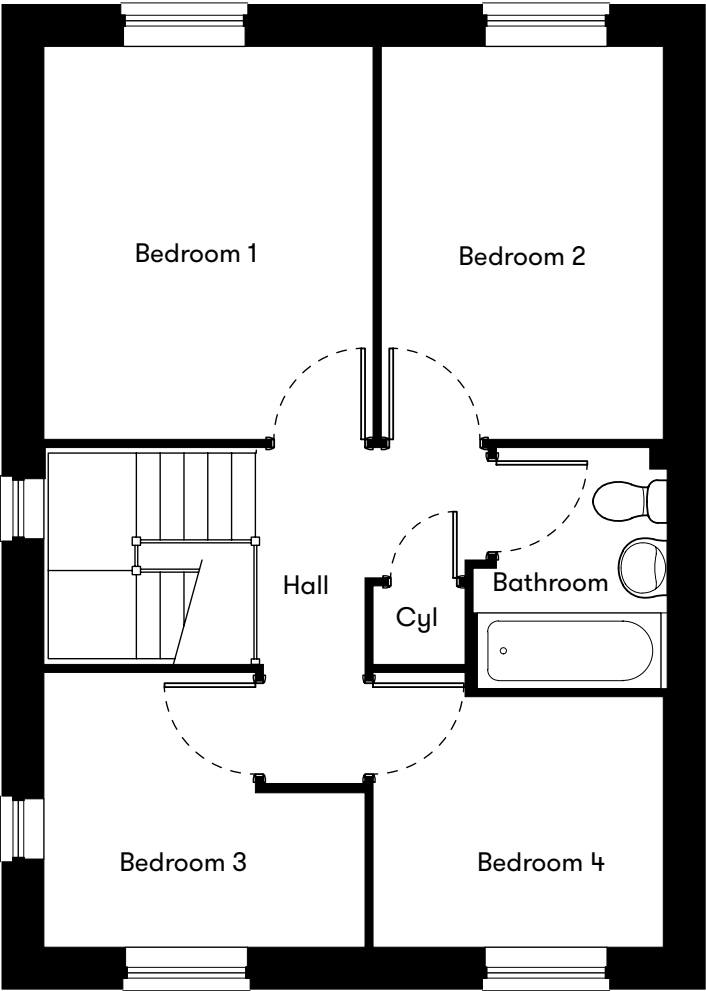
\*Including buildings insurance. Service charge to be confirmed.

Plots  
101, 102 & 106  
2 Bedroom House

Floor plan



Ground Floor



First Floor

| Plot | House type  | Open Market Value | 40% Share | Rent*    |
|------|---|-------------------|-----------|----------|
| 103  | 4 bedroom semi detached house with 2 parking spaces | -                 | -         | RESERVED |

\*Including buildings insurance. Service charge to be confirmed.

Plot 103  
4 Bedroom Houses

Contact us for more information

Telephone: 01752 856037  
Email: newhomes@livewest.co.uk



Contact us for more information

Telephone: 01752 856037  
Email: newhomes@livewest.co.uk

