

Site plan

● 2 bedroom houses
Plots 50, 51, 52 & 53

● 3 bedroom house
Plots 157, 158, 159 & 160

● LiveWest rented



Kingfisher Green

Cranbrook

Price start from
£84,000

for a 40% share* of
a 2 bedroom home

**No stamp duty for
first time buyers**

A great opportunity to purchase a two or three bedroom shared ownership new home at Kingfisher Green, Cranbrook.

Perfectly located for stunning countryside, good amenities and excellent transport links, the new town of Cranbrook could be the ideal town for you. Cranbrook has a large range of amenities, including independent shops, places to eat and a popular community centre.

Kingfisher Green is just a short distance away from two 'Good' schools rated by Ofsted.

The prices are correct at the time of print but can be subject to change, speak to a Sales Consultant for further details.
The floor plans shown are for guidance only and are subject to change during construction. Window and door positions may vary from home to home, and some homes may be left or right handed.

*Eligibility criteria. Terms and conditions apply. Prices are subject to change and are based on a 40% share of a 2 or 3 bedroom home. Speak to our Sales Consultants for further details.

Contact us for more information

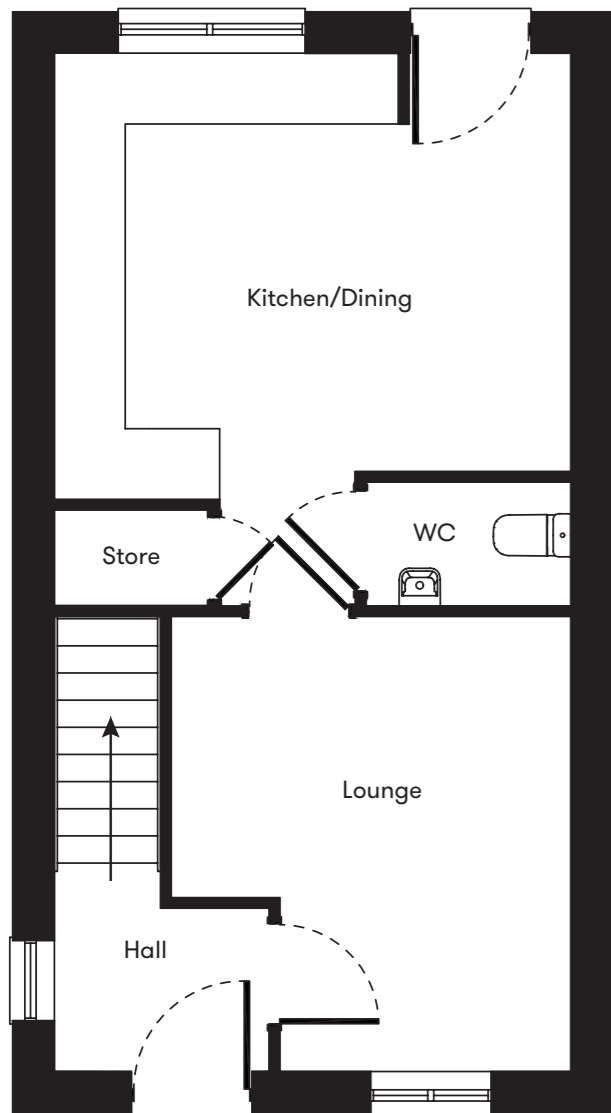
Telephone: 01752 856037

Email: newhomes@livewest.co.uk

LiveWest
A home for everyone

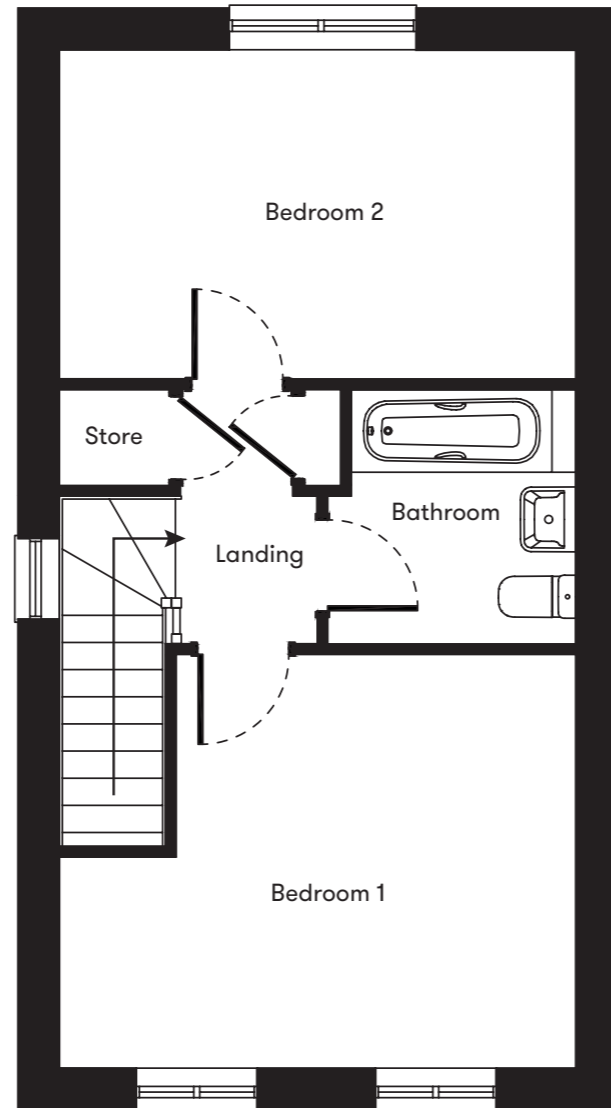
LiveWest
A home for everyone

Floor plan



Ground Floor

Plots
50, 51,
52 & 53
2 Bedroom Houses

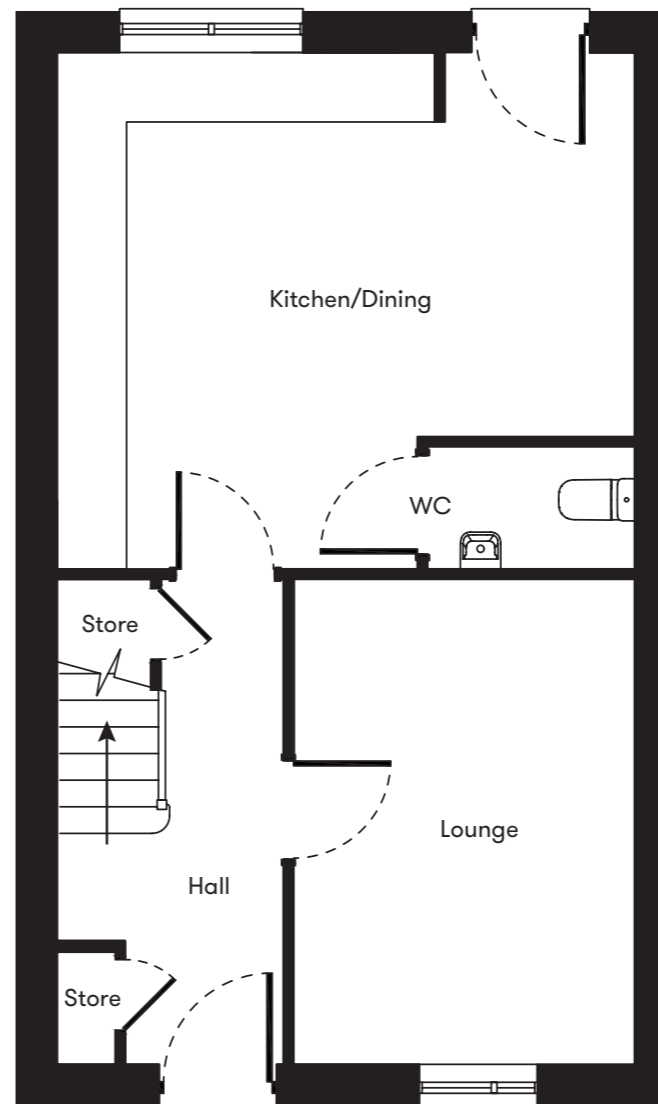


First Floor

Plot	House type	Open Market Value	40% Share	Rent*
50	2 bedroom semi detached house with 2 parking spaces	£222,500	£89,000	£285.13
51	2 bedroom end terrace house with 2 parking spaces	£217,500	£87,000	£278.88
52	2 bedroom mid terrace house with 1 parking space	£210,000	£84,000	£269.50
53	2 bedroom end terrace house with 1 parking space	£215,000	£86,000	£275.75

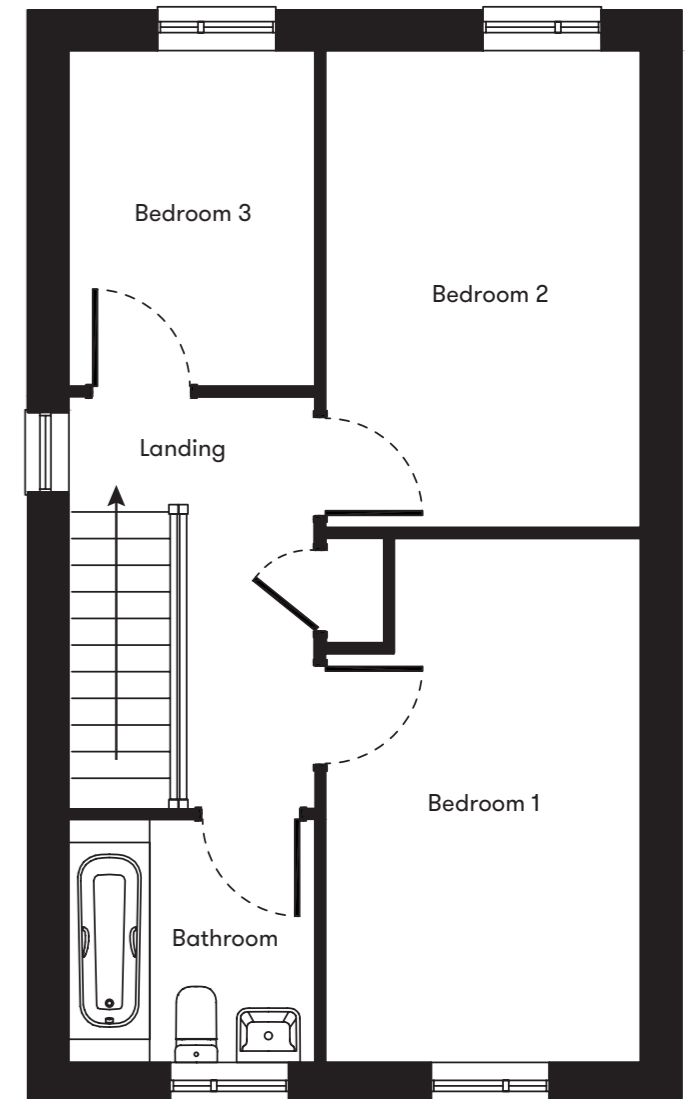
*Including buildings insurance. Service charge to be confirmed.

Floor plan



Ground Floor

Plots
157, 158,
159 & 160
3 Bedroom Houses



First Floor

Plot	House type	Open Market Value	40% Share	Rent*
157	3 bedroom end terrace house with 2 parking spaces	£245,000	£98,000	£313.72
158	3 bedroom mid terrace house with 2 parking spaces	£240,000	£96,000	£307.47
159	3 bedroom mid terrace house with 2 parking spaces	£240,000	£96,000	£307.47
160	3 bedroom end terrace house with 2 parking spaces	£245,000	£98,000	£313.72

*Including buildings insurance. Service charge to be confirmed.

Contact us for more information

Telephone: 01752 856037
Email: newhomes@livewest.co.uk



Contact us for more information

Telephone: 01752 856037
Email: newhomes@livewest.co.uk

