



Price start from
£80,600
for a 40% share* of
a 2 bedroom home

**No stamp duty for
first time buyers**

Harford Mews

Ivybridge

LiveWest are offering a fantastic opportunity to purchase one of three 2 bedroom shared ownership homes in the Harford Mews development in Ivybridge.

Ivybridge is conveniently situated close to the A38 which provides good connections to Cornwall, Plymouth and Exeter. The town offers something for the whole family to enjoy including a selection of shops, schools, local swimming pool, library and pubs.

The prices are correct at the time of print but can be subject to change, speak to a Sales Consultant for further details.
The floor plans shown are for guidance only and are subject to change during construction. Window and door positions may vary from home to home, and some homes may be left or right handed.

*Eligibility criteria. Terms and conditions apply. Prices are subject to change and are based on a 40% share of a 2 bedroom home.
Speak to our Sales Consultants for further details.

Contact us for more information

Telephone: 01752 856037

Email: newhomes@livewest.co.uk

LiveWest
A home for everyone

LiveWest
A home for everyone

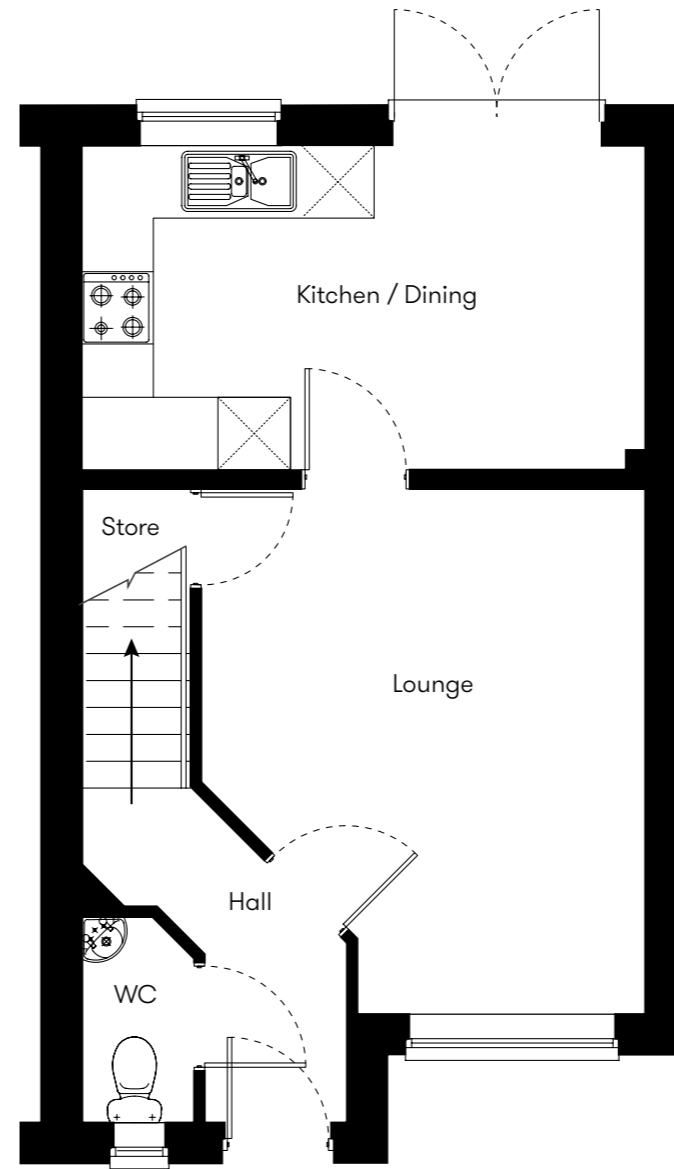
Site plan

● 2 bedroom houses
Plots 20, 21 & 22

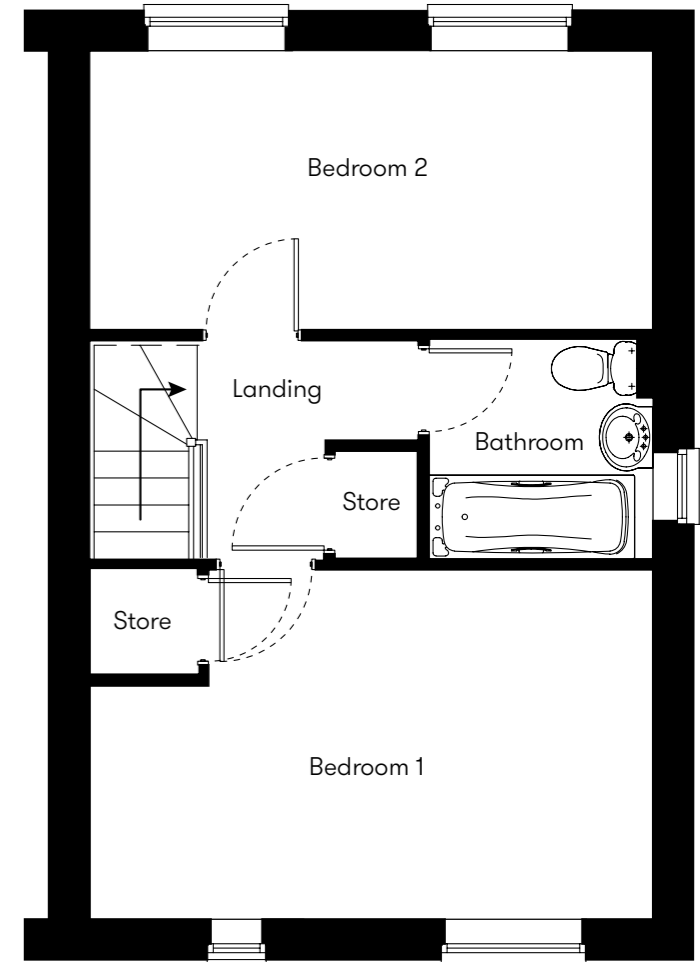


Floor plan

Plots
20, 21 & 22
2 Bedroom Houses



Ground Floor



First Floor

Plot	House type	Open Market Value	40% Share	Rent*
20	2 bedroom end terrace house with 2 parking spaces	£205,500	£82,200	£263.88
21	2 bedroom mid terrace house with 2 parking spaces	£201,500	£80,600	£258.88
22	2 bedroom end terrace house with 2 parking spaces	£209,000	£83,600	£268.25

*Including buildings insurance. Service charge to be confirmed.

Contact us for more information

Telephone: 01752 856037
Email: newhomes@livewest.co.uk



Contact us for more information

Telephone: 01752 856037
Email: newhomes@livewest.co.uk

