



Price start from
£100,000
for a 40% share* of
a 3 bedroom home

**No stamp duty for
first time buyers**

Furge Lane

Henstridge

A fantastic opportunity to buy one of two, 3 bed properties at Furge Lane, Henstridge.

Located in Blackmore Vale, Henstridge is a lovely village in South Somerset with easy access to the A30 and the A303. You will find a range of local facilities nearby and only a short distance to travel to Sherborne, Yeovil and Wincanton.

The prices are correct at the time of print but can be subject to change, speak to a Sales Consultant for further details.
The floor plans shown are for guidance only and are subject to change during construction. Window and door positions may vary from home to home, and some homes may be left or right handed. Please note that the carpets are not included as standard.

*Eligibility criteria. Terms and conditions apply. Prices are subject to change and are based on a 40% share of a 3 bedroom house.
Speak to our Sales Consultants for further details.

Contact us for more information

Telephone: 01934 526446

Email: newhomes@livewest.co.uk

LiveWest
A home for everyone

LiveWest
A home for everyone

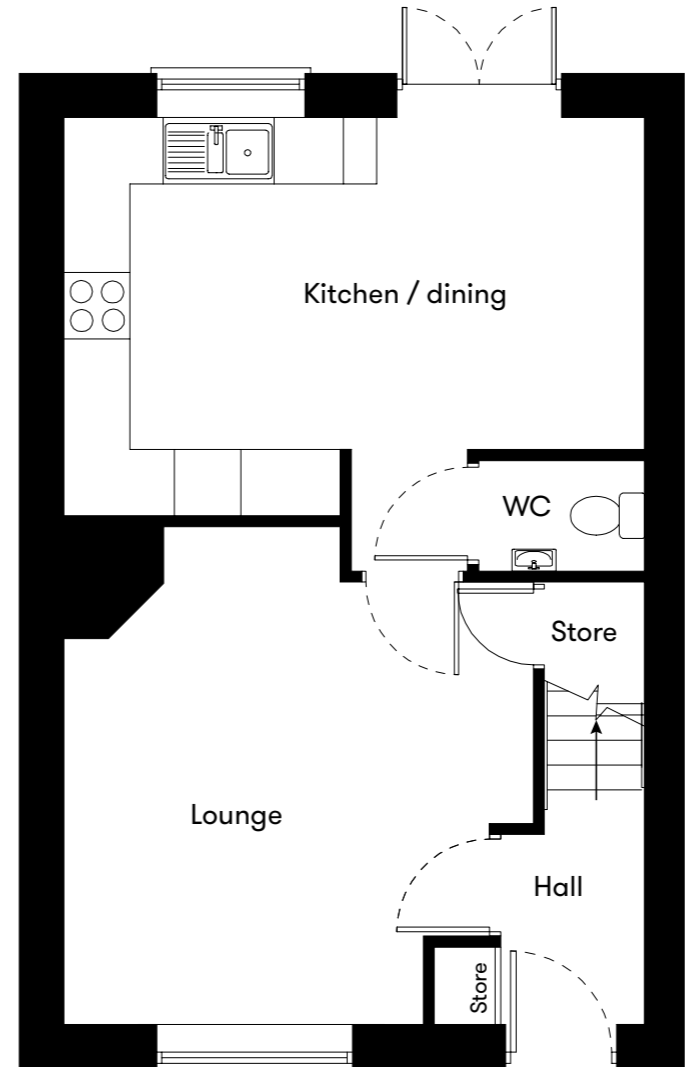
Site plan

Plots 9 & 10
3 bedroom house

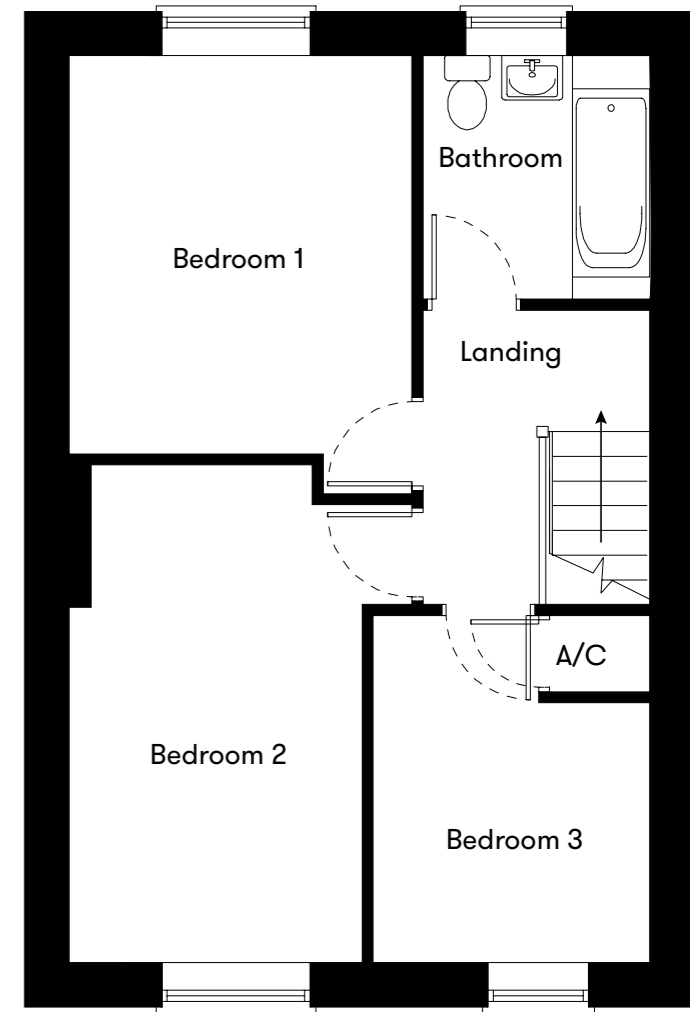


Floor plan

Plots
9 & 10
3 Bedroom Homes



Ground Floor



First Floor

Plot	House type	Open Market Value	40% Share	Monthly Charge
9	3 bedroom mid terrace house with 2 parking spaces	£250,000	£100,000	£340.96
10	3 bedroom end terrace house with 2 parking spaces	£260,000	£104,000	£352.99

*Monthly rent including buildings insurance and Service Charge.

Contact us for more information

Telephone: 01934 526446
Email: newhomes@livewest.co.uk



Contact us for more information

Telephone: 01934 526446
Email: newhomes@livewest.co.uk

