

# Site plan

- 3 bedroom house Plot 10&13
- 3 bedroom house Plot 11
- 3 bedroom house Plot 12



The prices are correct at the time of print but can be subject to change, speak to a Sales Consultant for further details. The floor plans shown are for guidance only and are subject to change during construction. Window and door positions may vary from home to home, and some homes may be left or right handed. Please note that the carpets are not included as standard.

\*Eligibility criteria. Terms and conditions apply. Prices are subject to change and are based on a 40% share of a 3 bedroom home. Speak to our Sales Consultants for further information.



Prices start from  
**£124,000**  
for a 40% share\* of  
a 3 bedroom home  
No stamp duty for  
first time buyers

## Evans Field Budleigh Salterton

Located at the thriving beachside town of Budleigh Salterton, LiveWest are offering a fantastic opportunity to purchase one of four three bedroom brand new shared ownership homes.

This new development is situated just 5 miles of Exmouth and 13 miles south east of Exeter. This coastal town has a range of amenities on it's doorstep, including shops, cafes, restaurants and more.

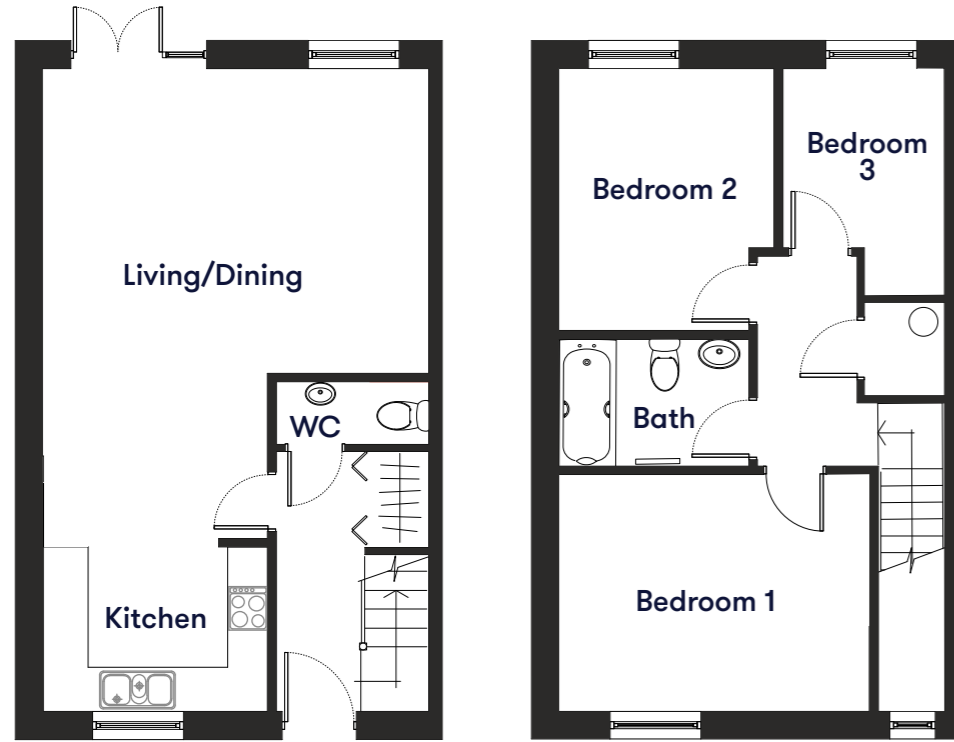
Contact us for more information

Telephone: 01752 856037  
Email: [newhomes@livewest.co.uk](mailto:newhomes@livewest.co.uk)

**LiveWest**  
A home for everyone

**LiveWest**  
A home for everyone

## Floor plan



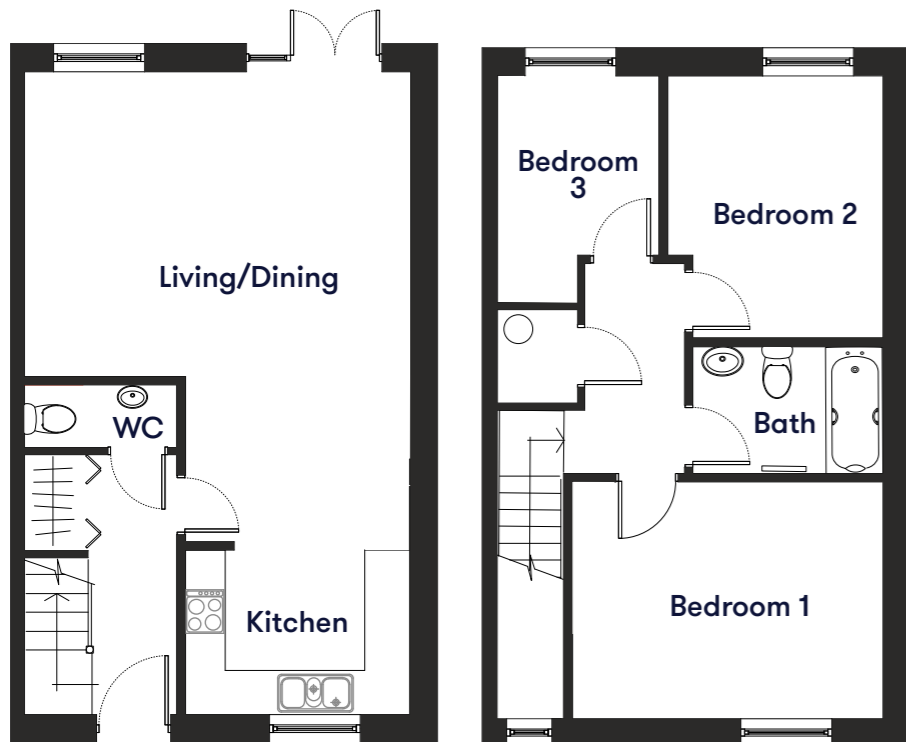
### Plot 11

3 Bedroom House

Plot	House type	Open Market Value	40% Share	Rent*
11	3 bedroom mid terrace house with 2 parking spaces	£310,000	£124,000	£394.97

\*Including buildings insurance and service charge to be confirmed

## Floor plan



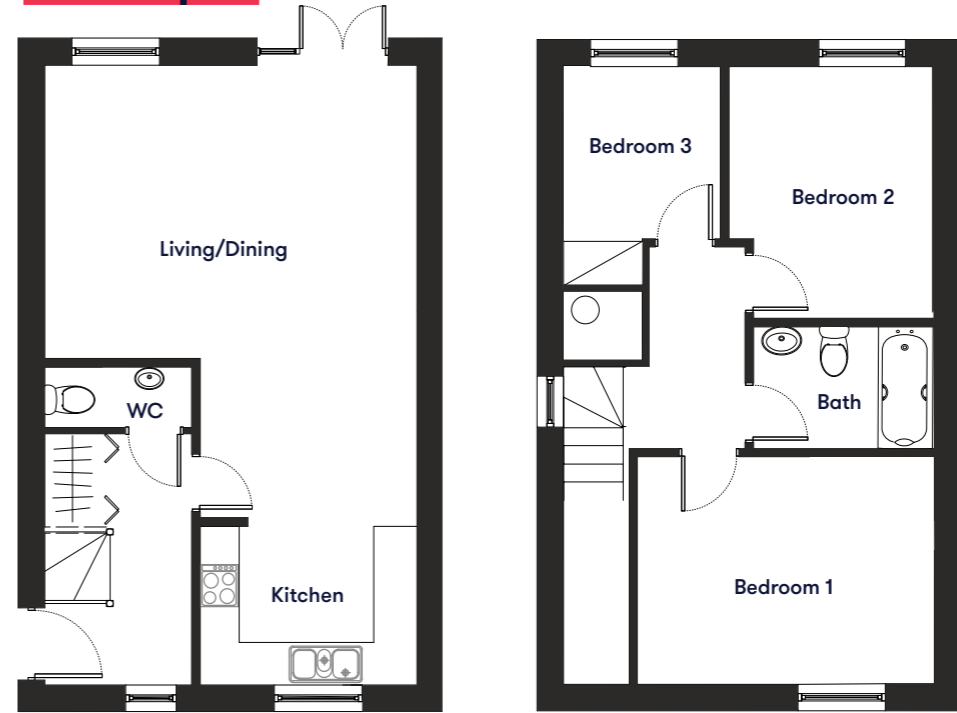
### Plot 12

3 Bedroom House

Plot	House type	Open Market Value	40% Share	Rent*
12	3 bedroom mid terrace house with 2 parking spaces	£310,000	£124,000	£394.97

\*Including buildings insurance and service charge to be confirmed

## Floor plan



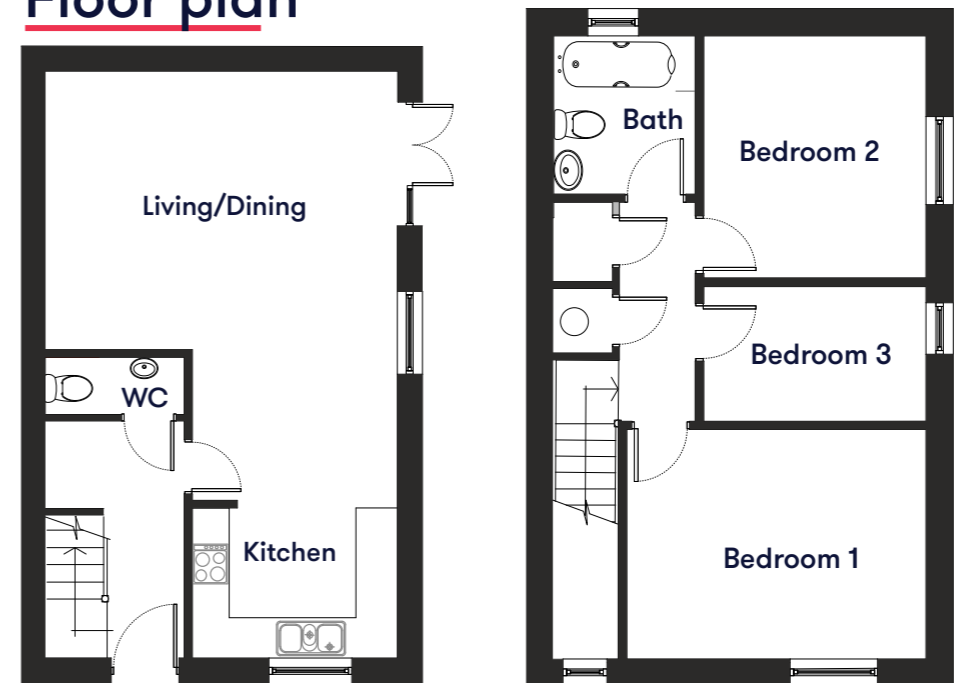
### Plot 10

3 Bedroom House

Plot	House type	Open Market Value	40% Share	Rent*
10	3 bedroom end of terrace house with 2 parking spaces	£315,000	£126,000	£401.22

\*Including buildings insurance and service charge to be confirmed

## Floor plan



### Plot 13

3 Bedroom House

Plot	House type	Open Market Value	40% Share	Rent*
13	3 bedroom end of terrace house with 2 parking spaces	£330,000	£132,000	£419.97

\*Including buildings insurance and service charge to be confirmed

Contact us for more information

Telephone: 01752 856037

Email: [newhomes@livewest.co.uk](mailto:newhomes@livewest.co.uk)

