



Prices start from

£105,000

for a 35% share* of
a 2 bedroom home

**No stamp duty for
first time buyers**

Cross Farm

Wedmore

LiveWest are offering a great opportunity to purchase a brand new home on the Cross Farm development in the popular village of Wedmore.

Wedmore is a large village situated between the River Axe and River Brue. With many amenities on it's doorstep including a medial practice, pharmacy, butchers, pubs, restaurants, shops and much more, Wedmore is a great place to call home.

The prices are correct at the time of print but can be subject to change, speak to a Sales Consultant for further details.
The floor plans shown are for guidance only and are subject to change during construction. Window and door positions may vary from home to home, and some homes may be left or right handed.

*Eligibility criteria. Terms and conditions apply. Prices are subject to change and are based on a 35% share of a 2 bedroom house.
Speak to our Sales Consultants for further details.

Computer generated image is for illustration purposes only.

Contact us for more information

Telephone: 01934 526 446

Email: newhomes@livewest.co.uk

LiveWest
A home for everyone

LiveWest
A home for everyone

Site plan

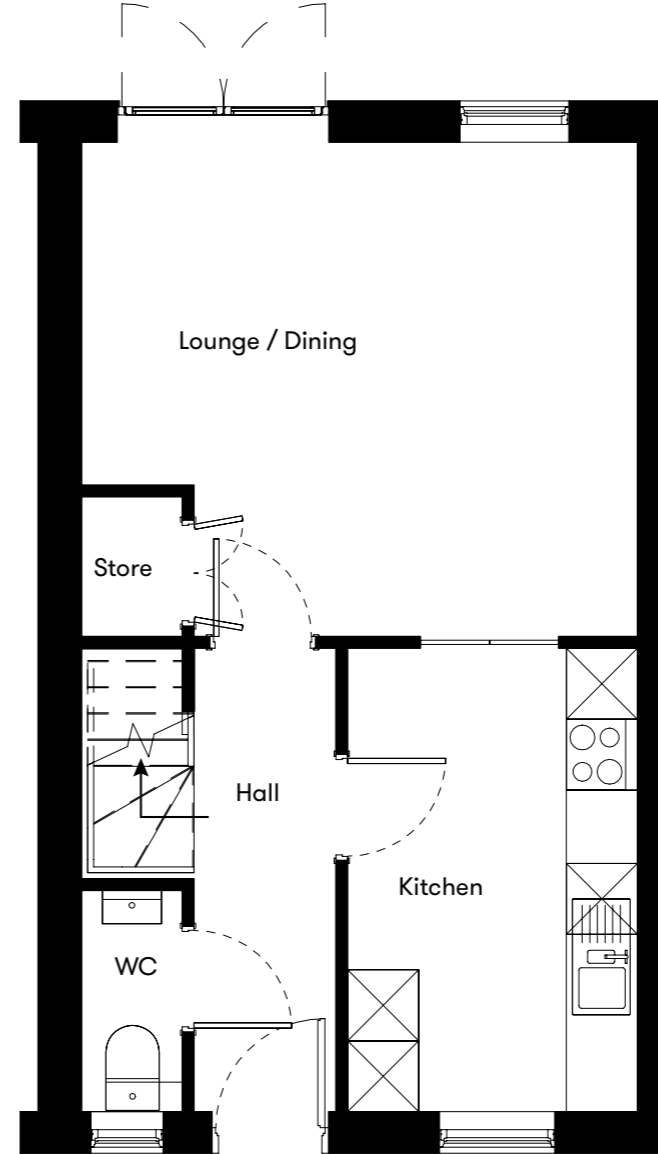
Plots 3 & 4
2 bedroom house

LiveWest Rent

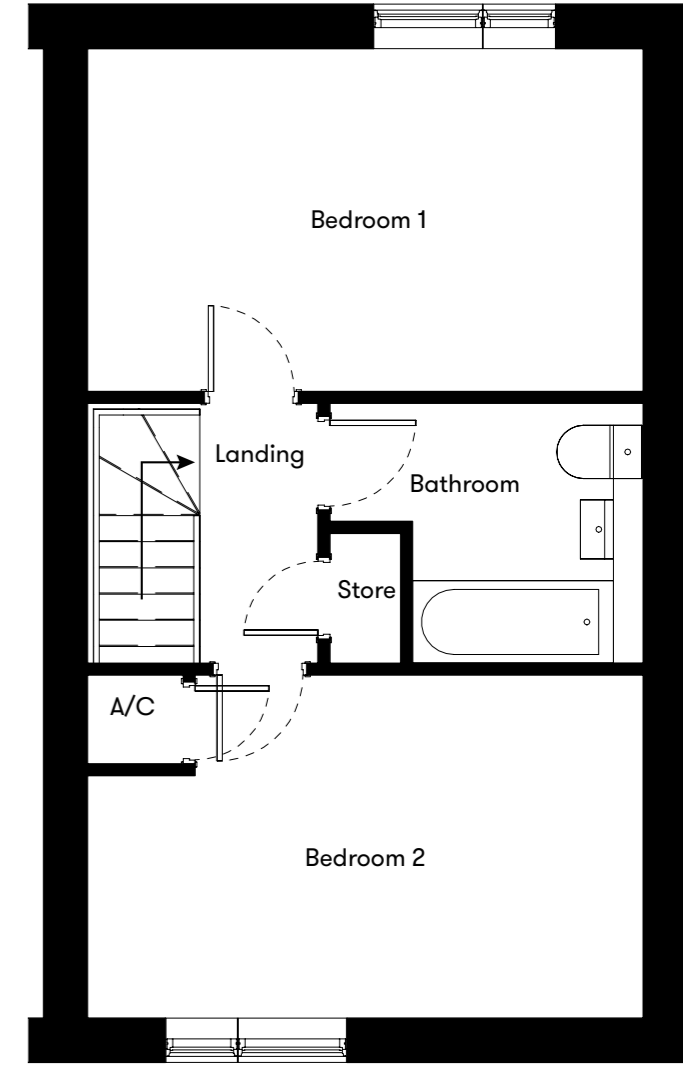


Floor plan

Plots 3 & 4
2 Bedroom House



Ground Floor



First Floor

Plot	House type	Open Market Value	35% Share	Rent*
3	2 bedroom end terrace house with 2 parking spaces	£300,000	£105,000	£456.58
4	2 bedroom mid terrace house with 2 parking spaces	£300,000	£105,000	£456.58

*Including buildings insurance and service charge.

Contact us for more information

Telephone: 01934 526 446
Email: newhomes@livewest.co.uk



Contact us for more information

Telephone: 01934 526 446
Email: newhomes@livewest.co.uk

