



Price start from
£93,000
for a 40% share* of
a 2 bedroom home

**No stamp duty for
first time buyers**

Corelli

Sherborne

A fantastic opportunity to purchase one of two 2 bed properties at the Corelli development in Sherborne, Dorset.

Located just off the A30 Yeovil Road, to the west of Sherborne town centre you will find a range of facilities nearby including a variety of shops, leisure and sports facilities, traditional pubs, cafes and restaurants. There's a good choice of well-respected junior and senior schools within Sherborne including the world-renowned Sherborne Girls and Boys schools, Leweston and The Gryphon School.

The prices are correct at the time of print but can be subject to change, speak to a Sales Consultant for further details.
The floor plans shown are for guidance only and are subject to change during construction. Window and door positions may vary from home to home, and some homes may be left or right handed. Please note that the carpets are not included as standard.

*Eligibility criteria. Terms and conditions apply. Prices are subject to change and are based on a 40% share of a 2 bedroom house.
Speak to our Sales Consultants for further details.

Contact us for more information

Telephone: 01934 526446

Email: newhomes@livewest.co.uk

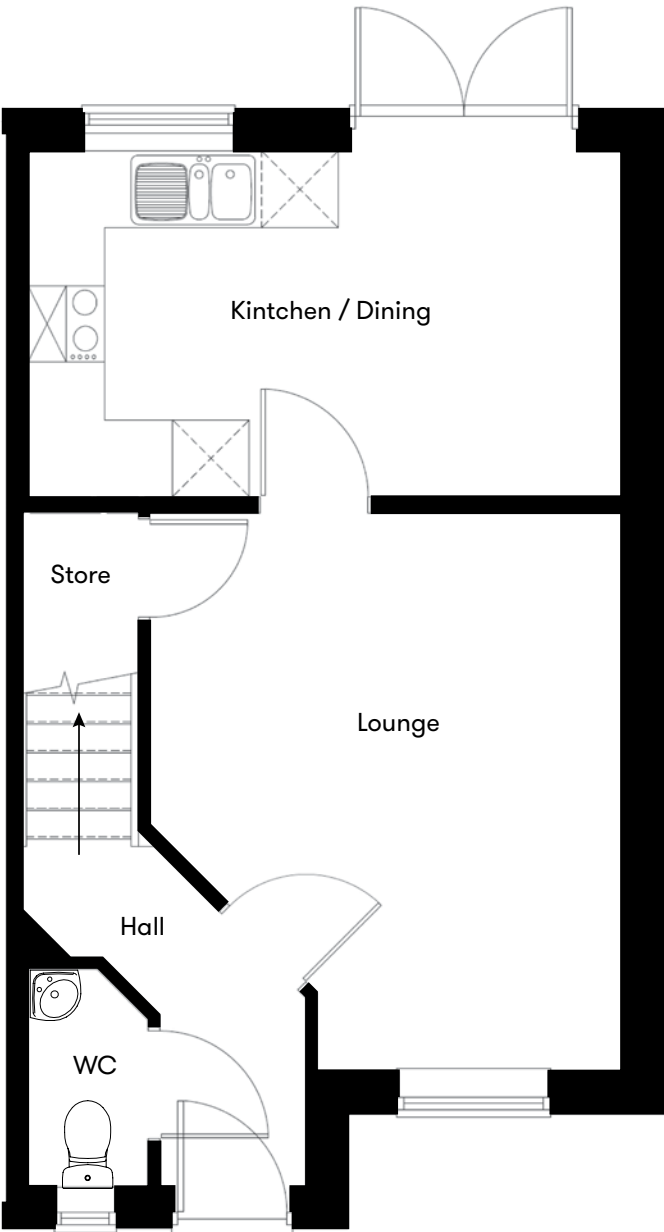
LiveWest
A home for everyone

LiveWest
A home for everyone

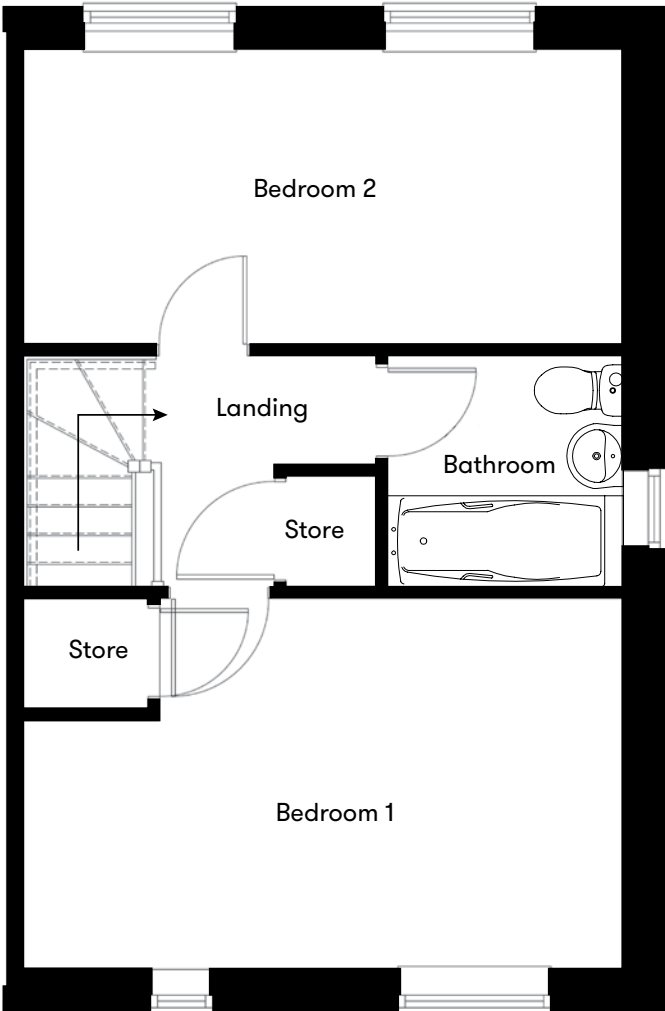
Site plan



Floor plan



Ground Floor



First Floor

Plots
257 & 258
2 Bedroom Homes

Plot	House type	Open Market Value	40% Share	Monthly Charge
257	2 bedroom semi detached house with 1 parking space	-	-	RESERVED
258	2 bedroom semi detached house with 1 parking space	£232,500	£93,000	£314.88

*Monthly rent including buildings insurance and Service Charge.

Contact us for more information

Telephone: 01934 526446
Email: newhomes@livewest.co.uk



Contact us for more information

Telephone: 01934 526446
Email: newhomes@livewest.co.uk

