



Price start from  
**£100,600**  
for a 40% share\* of  
a 3 bedroom home

## Bridge View

### Wadebridge

A fantastic opportunity to purchase one of two 3 bedroom houses at the Bridge View development in Wadebridge.

This development is situated on the hillside overlooking the River Camel. Wadebridge is the starting point for the Camel Cycle Trail and is well known for holding the Royal Cornwall Show.

Pop in your car and you will have easy access to all the beaches that the north coast has to offer.

The prices are correct at the time of print but can be subject to change, speak to a Sales Consultant for further details.  
The floor plans shown are for guidance only and are subject to change during construction. Window and door positions may vary from home to home, and some homes may be left or right handed. Please note that the carpets are not included as standard.

\*Eligibility criteria. Terms and conditions apply. Prices are subject to change and are based on a 40% share of a 3 bedroom house.  
Speak to our Sales Consultants for further details.

Contact us for more information

Telephone: 01752 856037

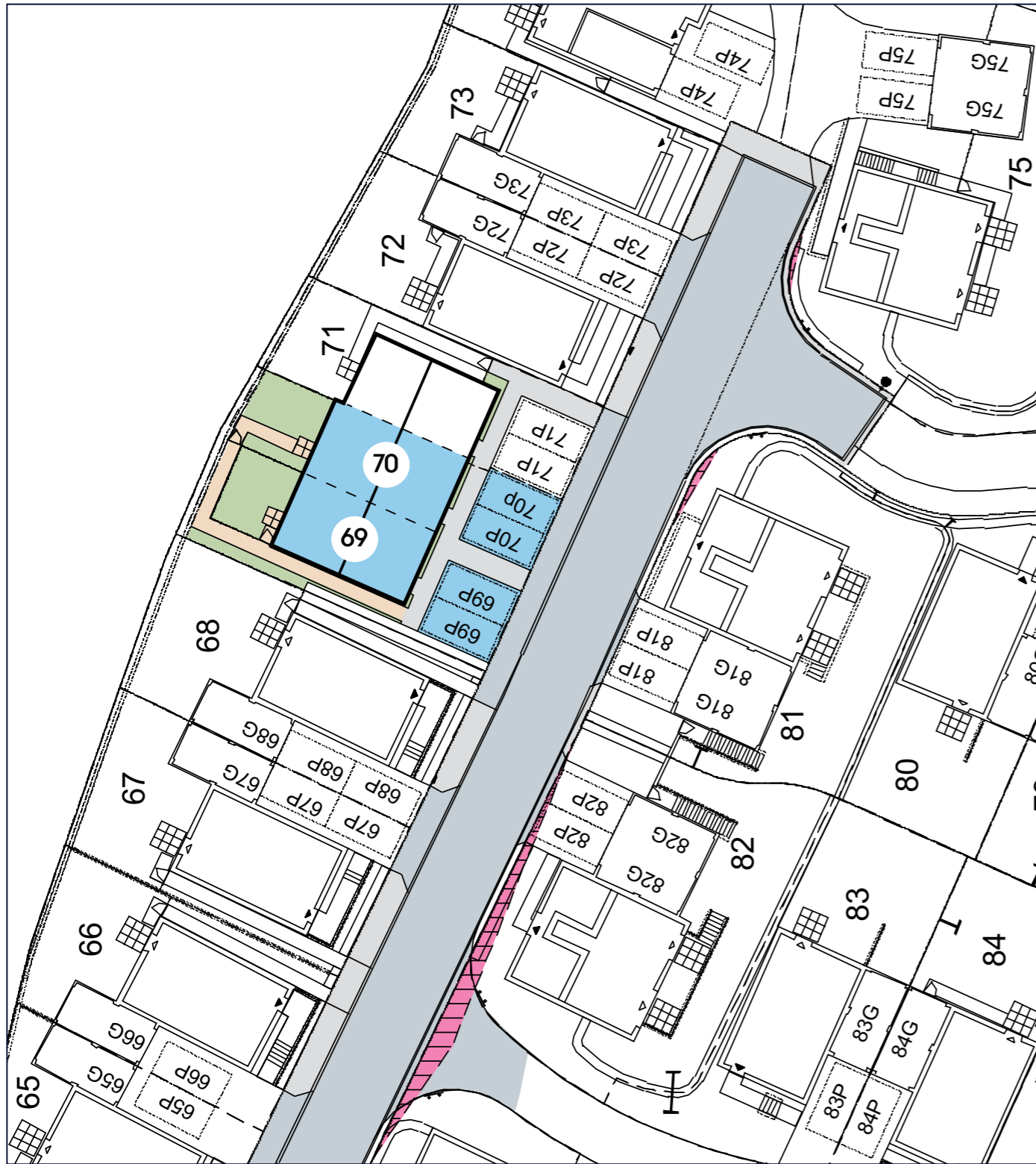
Email: [newhomes@livewest.co.uk](mailto:newhomes@livewest.co.uk)

**LiveWest**  
A home for everyone

**LiveWest**  
A home for everyone

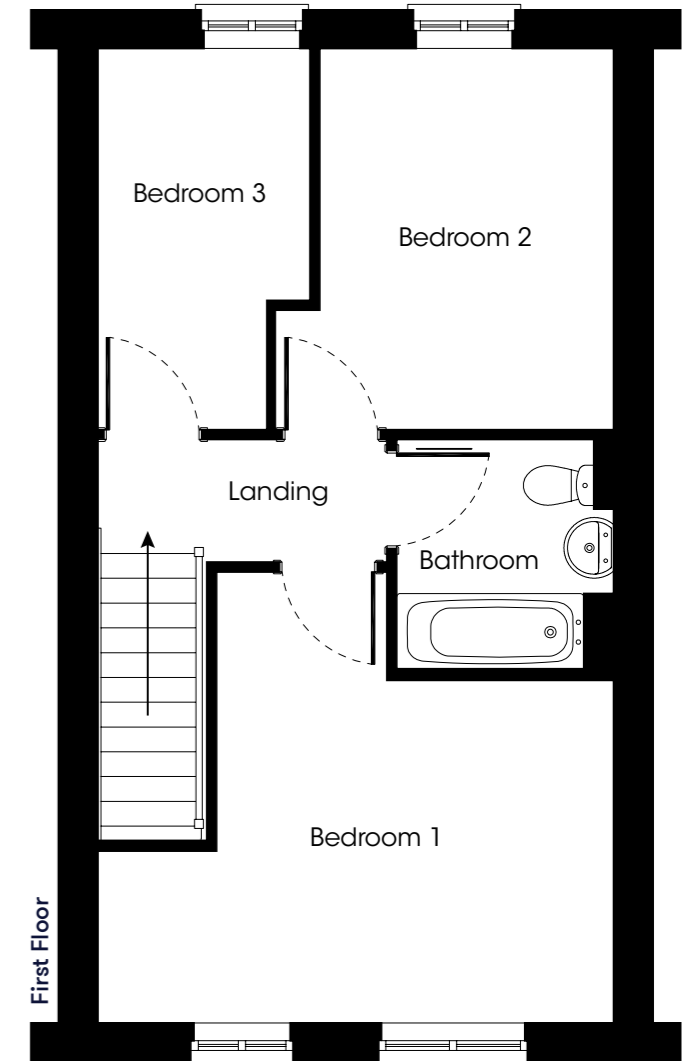
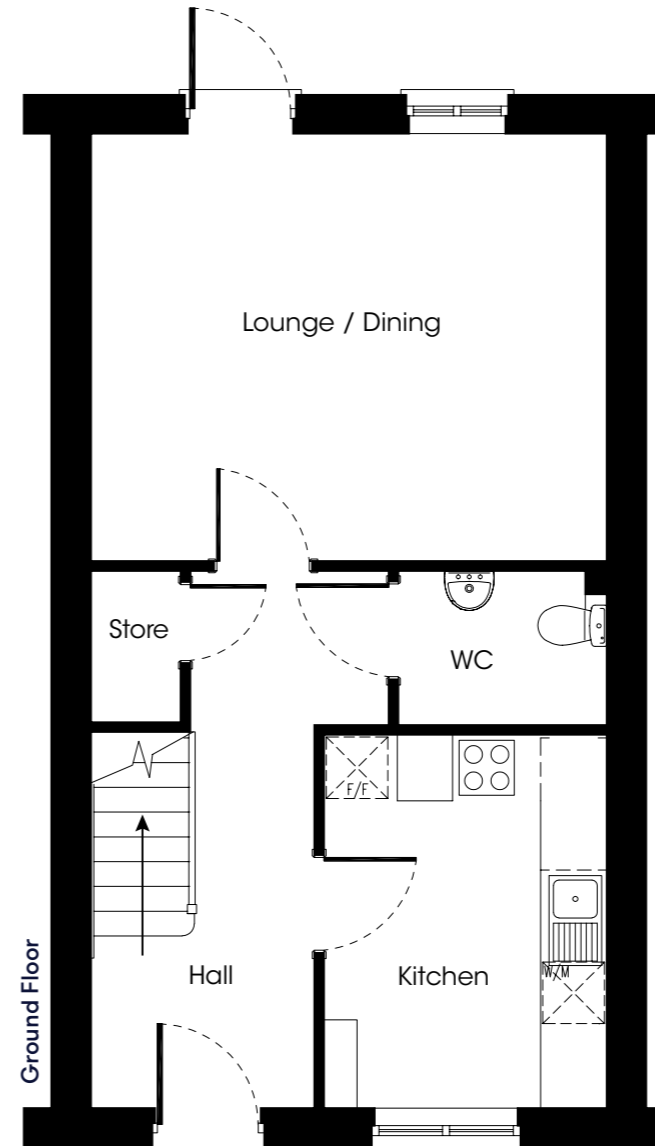
# Site plan

Plots 69 & 70  
3 bedroom house



# Floor plan

Plots  
69 & 70  
3 Bedroom Home



Plot	House type	Open Market Value	40% Share	Rent*
69	3 bedroom end terrace house with 2 parking spaces	£252,500	£101,000	£334.55
70	3 bedroom mid terrace house with 2 parking spaces	£251,500	£100,600	£333.30

\*Including buildings insurance and service charge.

Contact us for more information

Telephone: 01752 856037  
Email: [newhomes@livewest.co.uk](mailto:newhomes@livewest.co.uk)



Contact us for more information

Telephone: 01752 856037  
Email: [newhomes@livewest.co.uk](mailto:newhomes@livewest.co.uk)

