



Prices start from  
**£100,000**  
for a 40% share\* of  
a 3 bedroom home  
**No stamp duty for  
first time buyers**

# Bevin Gardens

## Copplestone

A fantastic opportunity to purchase one of two 3 bedroom houses in Copplestone.

Copplestone is a lovely village offering a range of local amenities and within easy reach of the market town of Crediton.

The prices are correct at the time of print but can be subject to change, speak to a Sales Consultant for further details.  
The floor plans shown are for guidance only and are subject to change during construction. Window and door positions may vary from home to home, and some homes may be left or right handed.

\*Eligibility criteria. Terms and conditions apply. Prices are subject to change and are based on a 40% share of a 3 bedroom house. A max share of 40% can be purchased initially. Speak to our Sales Consultants for further details.

Computer generated image is for illustration purposes only.

Contact us for more information

Telephone: 01752 856037  
Email: [newhomes@livewest.co.uk](mailto:newhomes@livewest.co.uk)



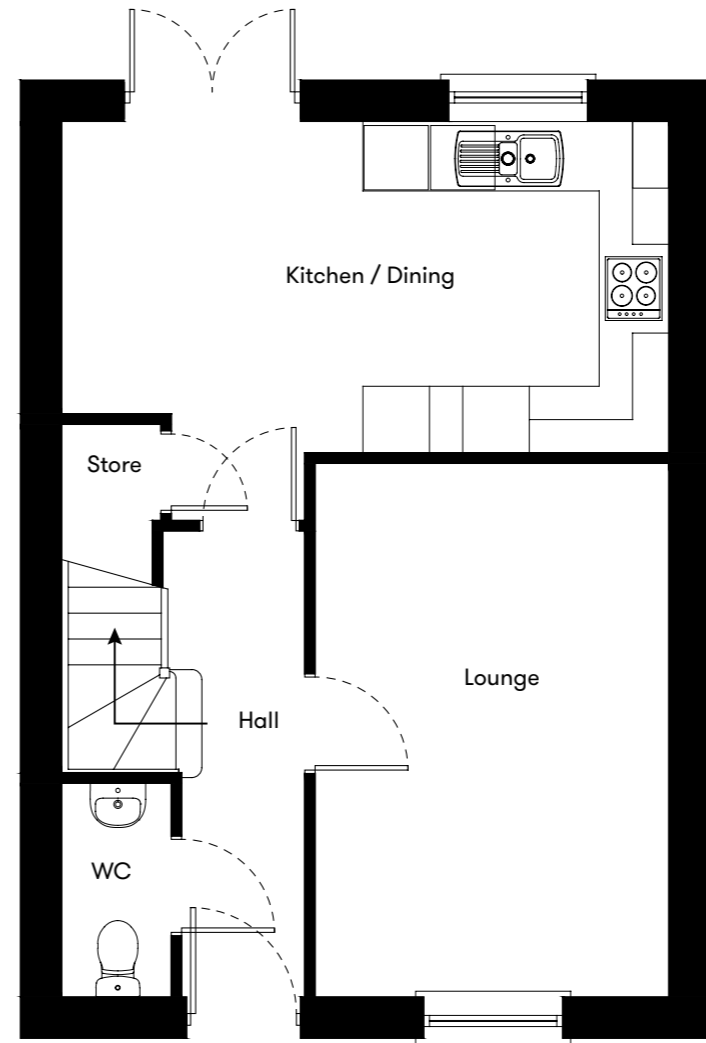
# Site plan

Plots 33 & 34  
3 bedroom house

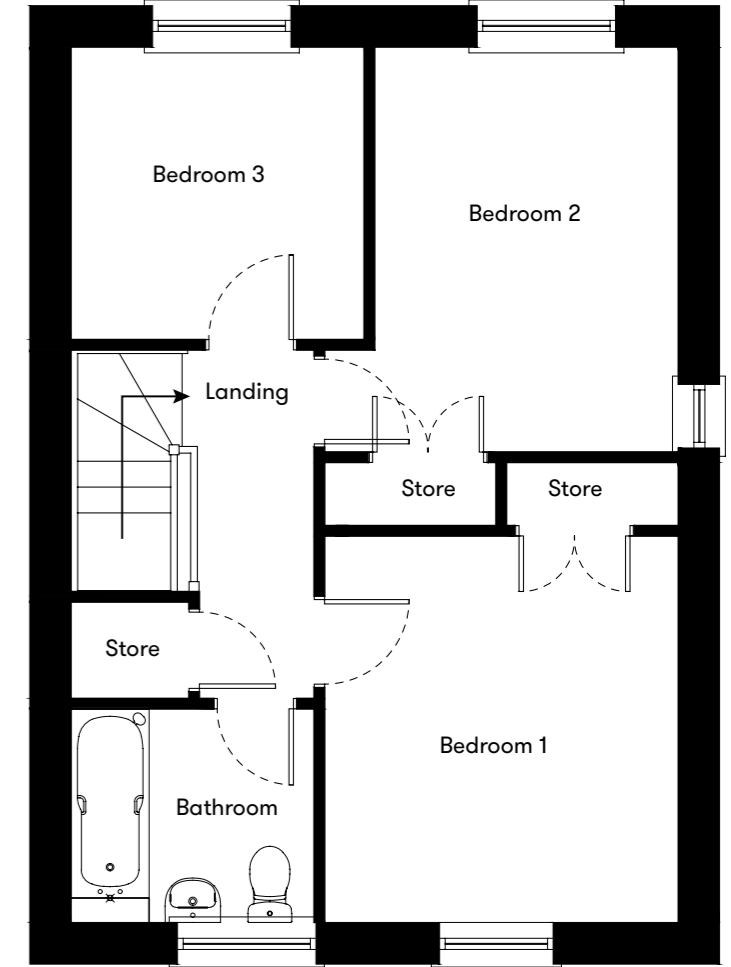


# Floor plan

Plots  
33 & 34  
3 Bedroom Houses



Ground Floor



First Floor

Plot	House type	Open Market Value	40% Share	Rent*
33	3 bedroom semi detached house with 2 parking spaces	£250,000	£100,000	£319.97
34	3 bedroom semi detached house with 2 parking spaces	£250,000	£100,000	£319.97

\*Including buildings insurance. Service charge to be confirmed.

Contact us for more information

Telephone: 01752 856037  
Email: newhomes@livewest.co.uk



Contact us for more information

Telephone: 01752 856037  
Email: newhomes@livewest.co.uk

