



Price start from
£102,000
for a 40% share* of
a 3 bedroom home

Beecham Place

Midsomer Norton

A fantastic opportunity to purchase one of two, 3 bed properties at Beecham Place, Midsomer Norton.

Tucked away in the Mendip Hills, Midsomer Norton is a cosy town which offers plenty of local facilities and good transport links to Bath and Wells.

The prices are correct at the time of print but can be subject to change, speak to a Sales Consultant for further details.
The floor plans shown are for guidance only and are subject to change during construction. Window and door positions may vary from home to home, and some homes may be left or right handed. Please note that the carpets are not included as standard.

*Eligibility criteria. Terms and conditions apply. Prices are subject to change and are based on a 40% share of a 3 bedroom house.
Speak to our Sales Consultants for further details.

Contact us for more information

Telephone: 01934 526446

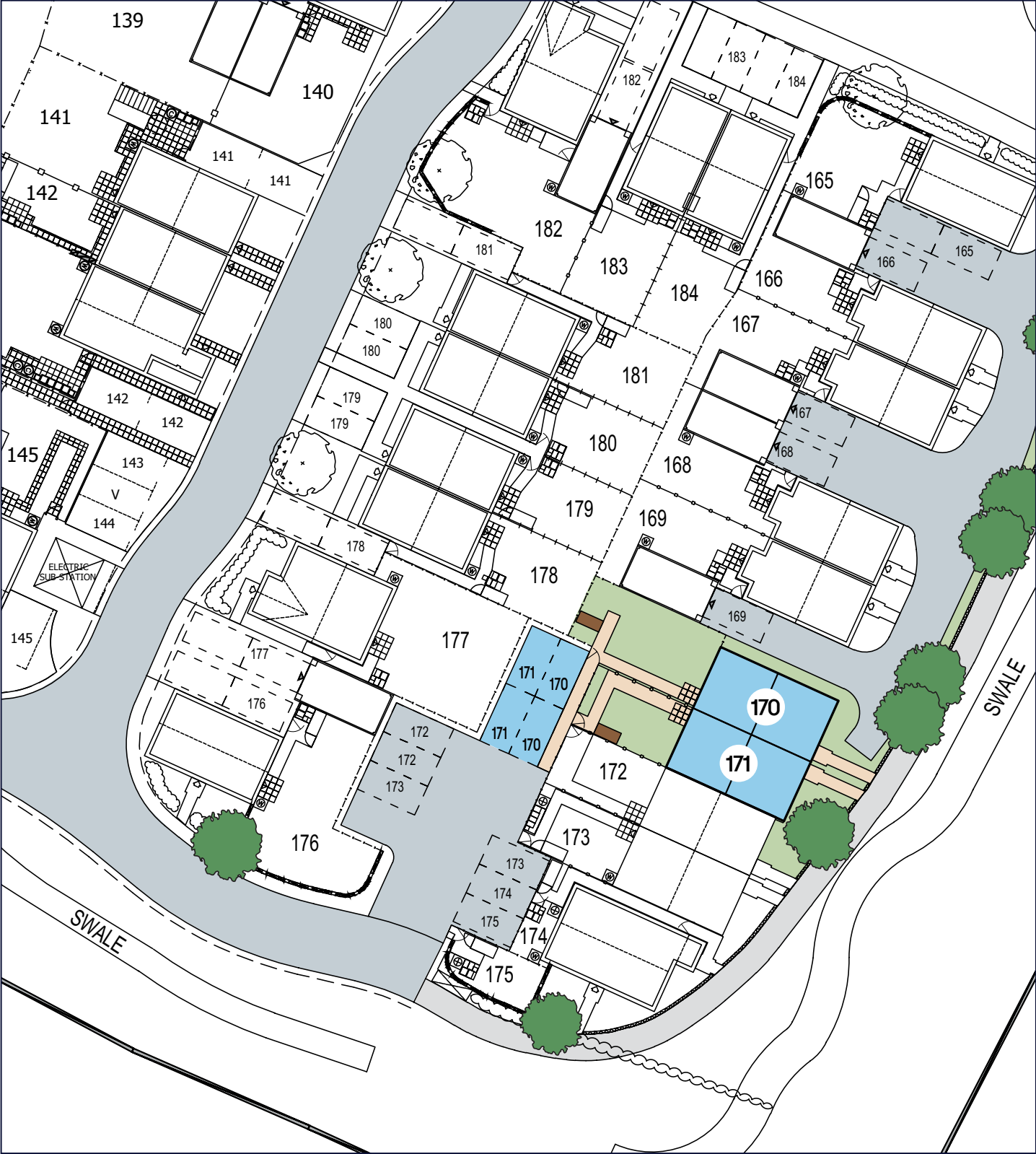
Email: newhomes@livewest.co.uk

LiveWest
A home for everyone

LiveWest
A home for everyone

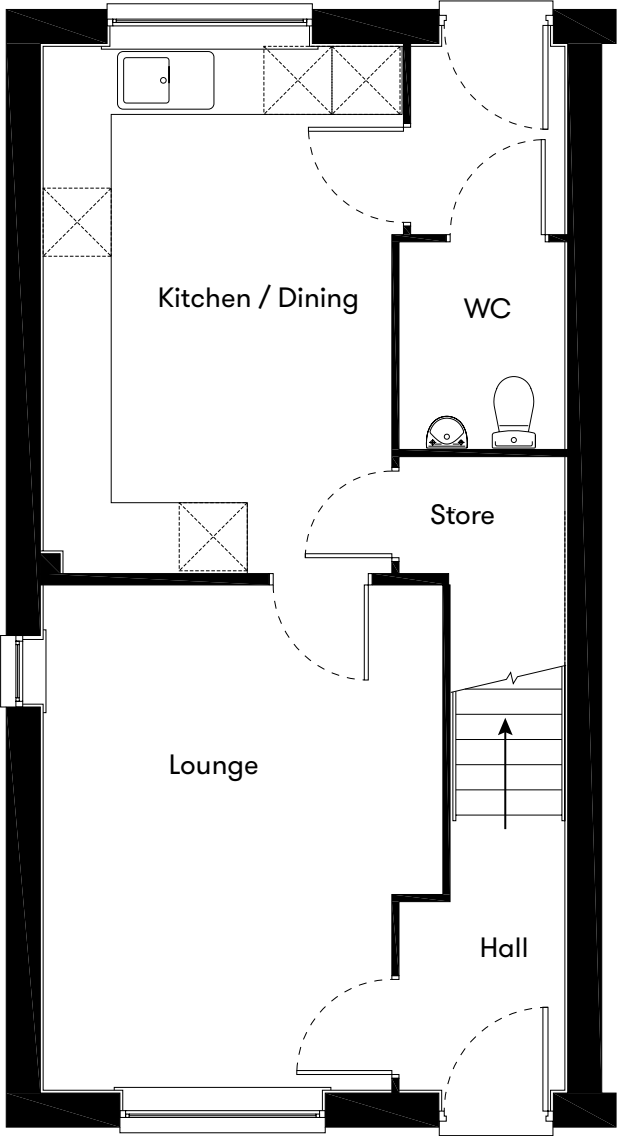
Site plan

Plots 170 & 171
3 bedroom house

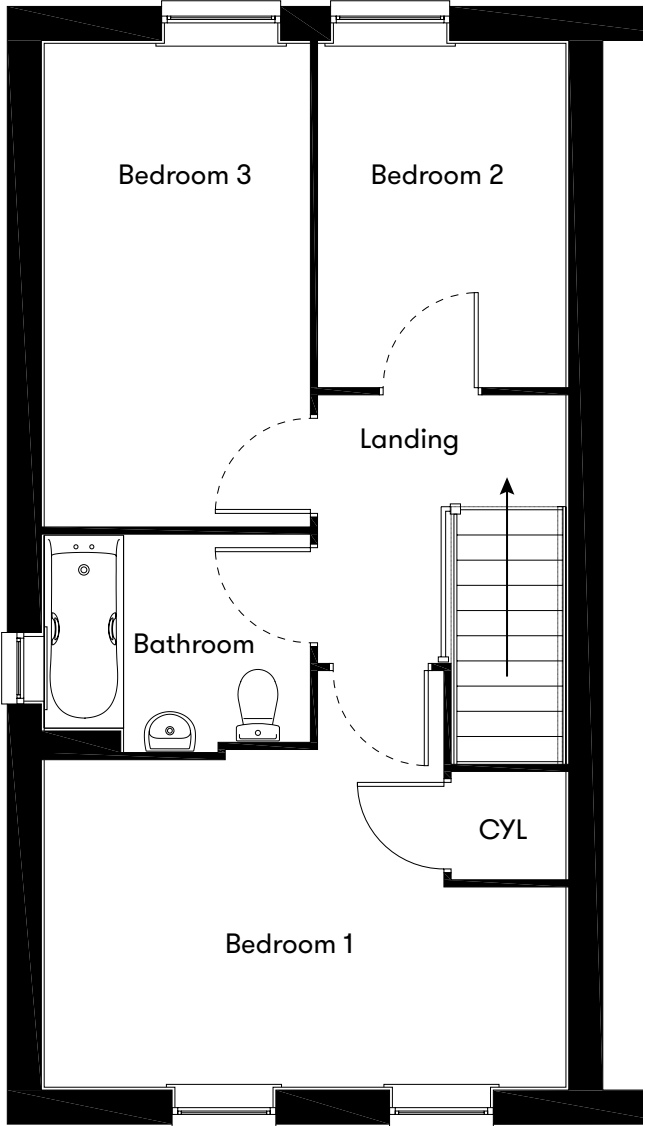


Floor plan

Plots
170 & 171
3 Bedroom Home



Ground Floor



First Floor

Plot	House type	Open Market Value	40% Share	Monthly Charge*
170	3 bedroom end terrace with 2 parking spaces	£260,000	£104,000	£359.90
171	3 bedroom mid terrace with 2 parking spaces	£255,000	£102,000	£353.65

* including rent, buildings insurance, service charge and management fee.

Contact us for more information

Telephone: 01934 526446
Email: newhomes@livewest.co.uk



Contact us for more information

Telephone: 01934 526446
Email: newhomes@livewest.co.uk

