

Site plan

● Plots 13, 14, 15 & 16
3 bedroom house

● Plots 38 & 39
4 bedroom house

● LiveWest rent



The prices are correct at the time of print but can be subject to change, speak to a Sales Consultant for further details.
The floor plans shown are for guidance only and are subject to change during construction. Window and door positions may vary from home to home, and some homes may be left or right handed.

*Eligibility criteria. Terms and conditions apply. Prices are subject to change and are based on a 40% share of a 3 bedroom house and a 35% share of a 4 bedroom house. Speak to our Sales Consultants for further details.



Prices start from
£98,000
for a 40% share* of
a 3 bedroom house
**No stamp duty for
first time buyers**

Ashworth Place

Exeter

LiveWest are offering a mixture of three and four bedroom houses at Ashworth Place.

Ideally located to provide easy access to East Devon and Exeter city centre, Ashworth Place is the perfect place to call home. With only a short distance from Dartmoor National Park and Devon's coast, there is plenty to do for all the family.

This is an amazing opportunity to purchase a brand new shared ownership home. Local connection required.

Contact us for more information

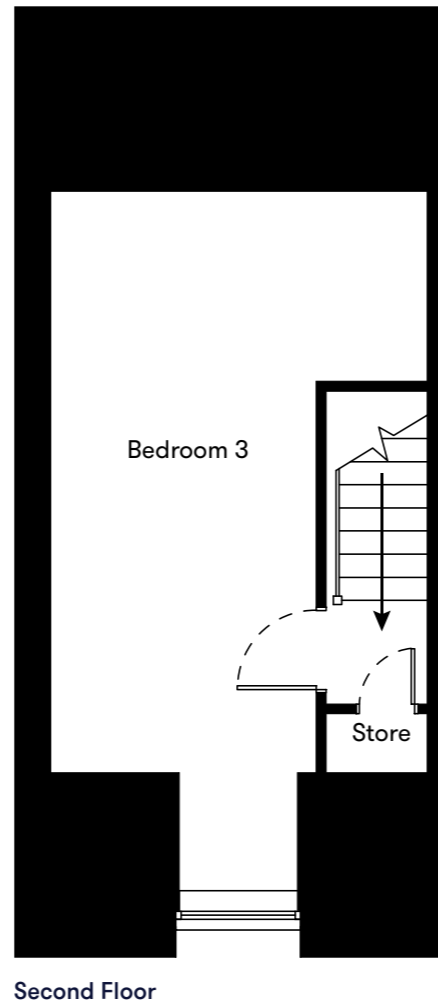
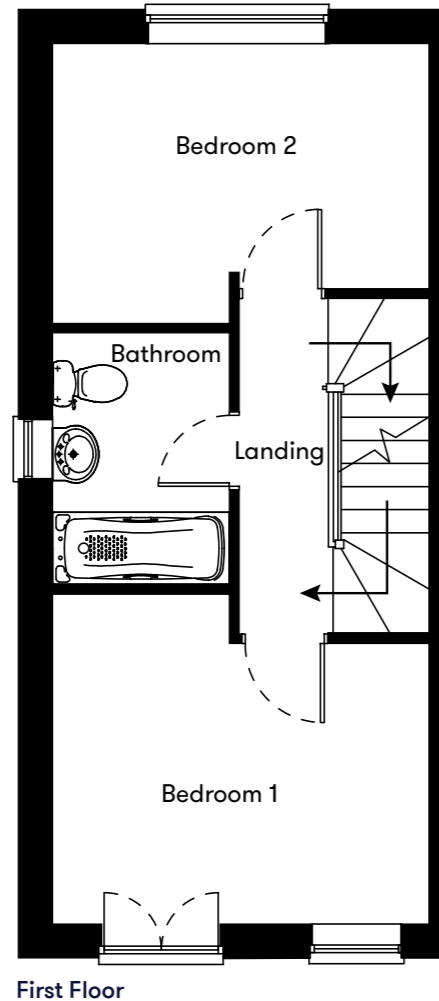
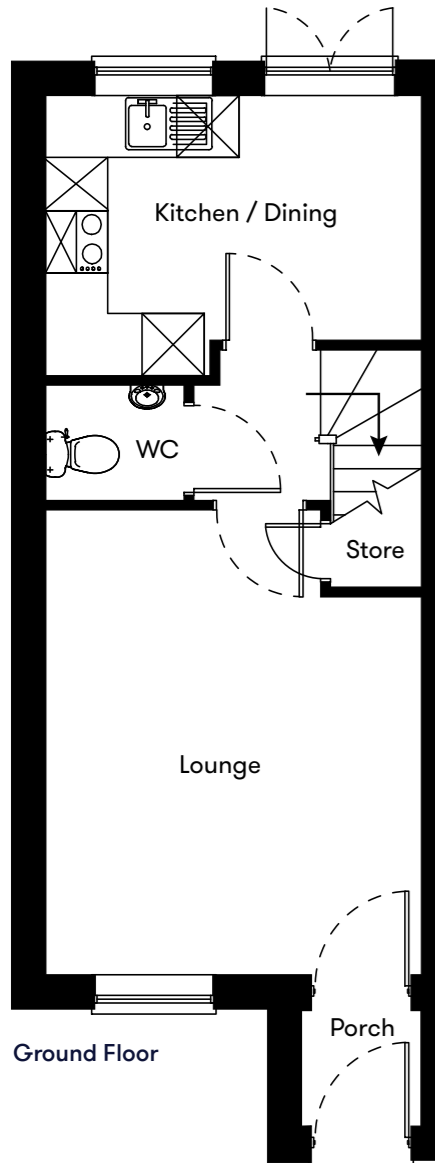
Telephone: 01752 856037

Email: newhomes@livewest.co.uk

LiveWest
A home for everyone

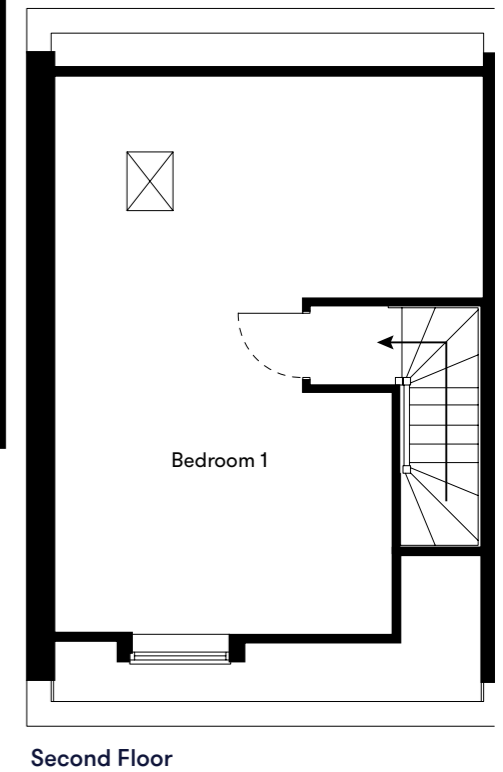
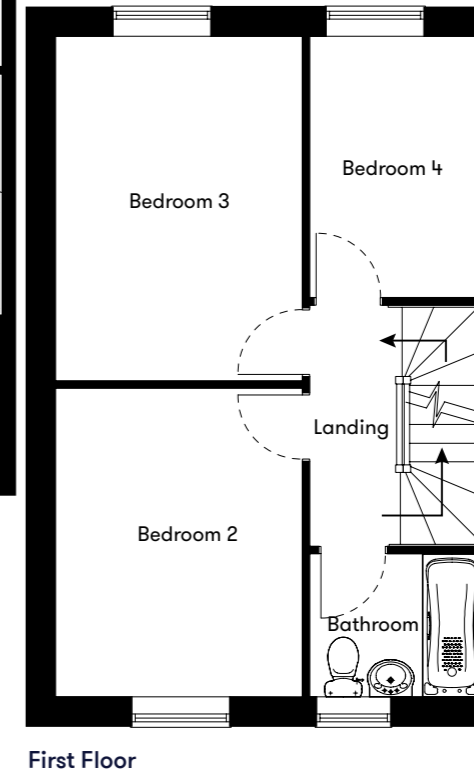
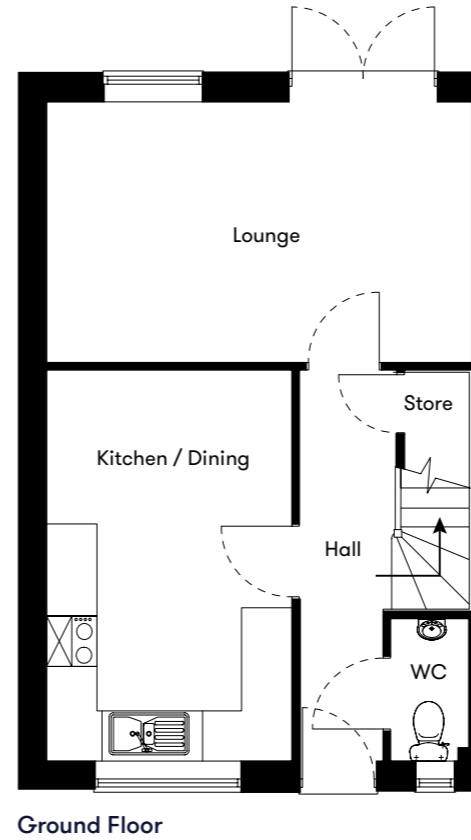
LiveWest
A home for everyone

Floor plan



**Plots
13, 14,
15 & 16**
3 Bedroom Houses

Floor plan



**Plots
38 & 39**
4 Bedroom Houses

Plot	House type	Open Market Value	40% Share	Monthly Charge
13	3 bedroom end terrace house with 2 parking spaces	£250,000	£100,000	£319.97
14	3 bedroom mid terrace house with 2 parking spaces	£245,000	£98,000	£313.72
15	3 bedroom mid terrace house with 2 parking spaces	£245,000	£98,000	£313.72
16	3 bedroom end terrace house with 2 parking spaces	£250,000	£100,000	£319.97

*Including rent, buildings insurance. Service charge to be confirmed.

Plot	House type	Open Market Value	35% Share	Monthly Charge
38	4 bedroom semi detached house with 2 parking spaces	£330,000	£115,500	£454.81
39	4 bedroom semi detached house with 2 parking spaces	£330,000	£115,500	£454.81

*Including rent, buildings insurance. Service charge to be confirmed.

Contact us for more information

Telephone: 01752 856037
Email: newhomes@livewest.co.uk



Contact us for more information

Telephone: 01752 856037
Email: newhomes@livewest.co.uk

