



Prices start from
£87,000

for a 40% share* of
a 2 bedroom home

**No stamp duty for
first time buyers**

Ashworth Place

Exeter

Ideally located to provide easy access to East Devon and Exeter city centre, Ashworth Place is the perfect place to call home. With only a short distance from Dartmoor National Park and Devon's coast, there is plenty to do for all the family.

This is an amazing opportunity to purchase a brand new shared ownership home. Local connection required.

The prices are correct at the time of print but can be subject to change, speak to a Sales Consultant for further details.
The floor plans shown are for guidance only and are subject to change during construction. Window and door positions may vary from home to home, and some homes may be left or right handed. Please note that the carpets are not included as standard.

*Eligibility criteria. Terms and conditions apply. Prices are subject to change and are based on a 40% share of a 2 bedroom home. Speak to our Sales Consultants for further details.

Contact us for more information

Telephone: 01752 856 037

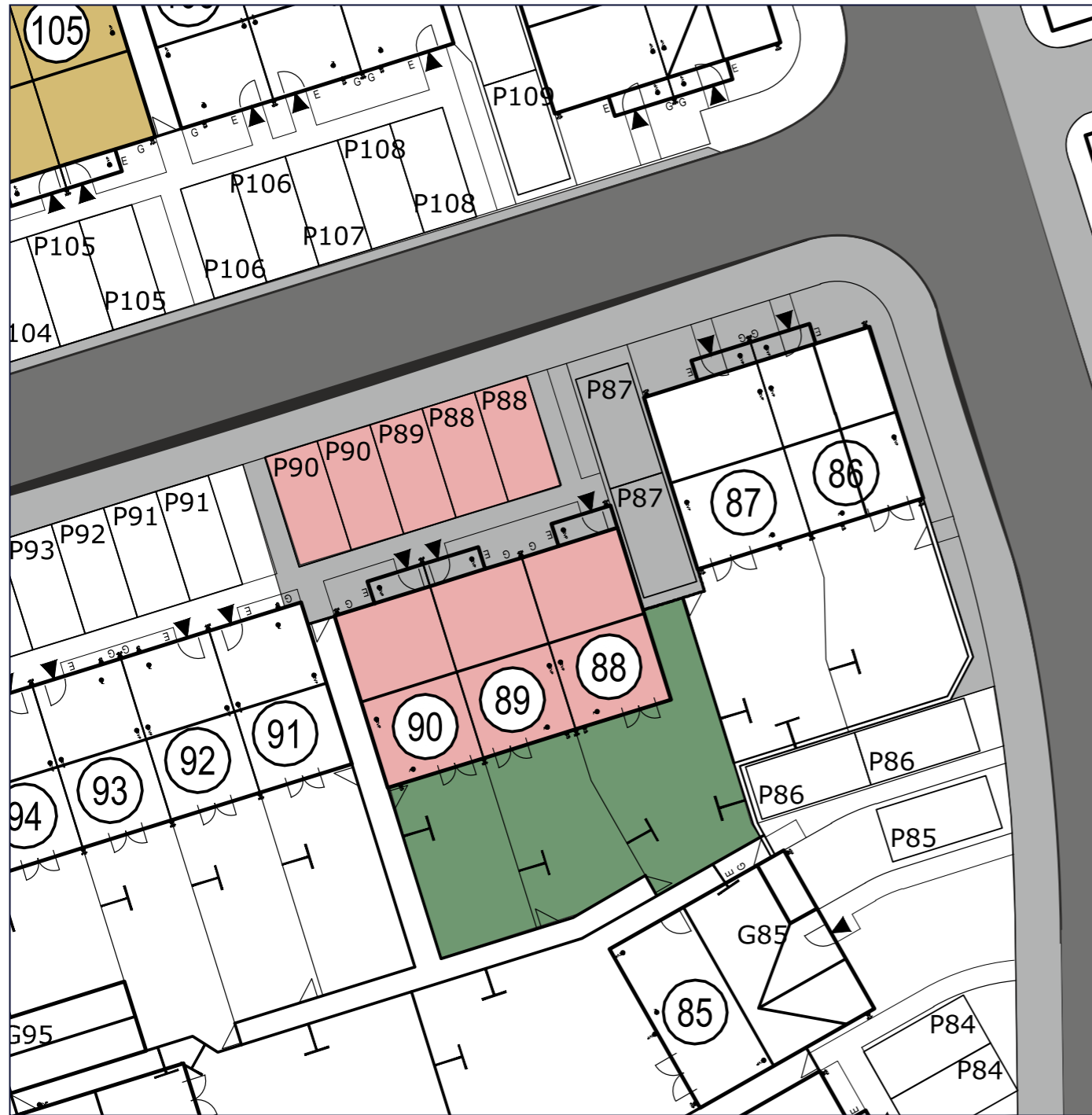
Email: newhomes@livewest.co.uk

LiveWest
A home for everyone

LiveWest
A home for everyone

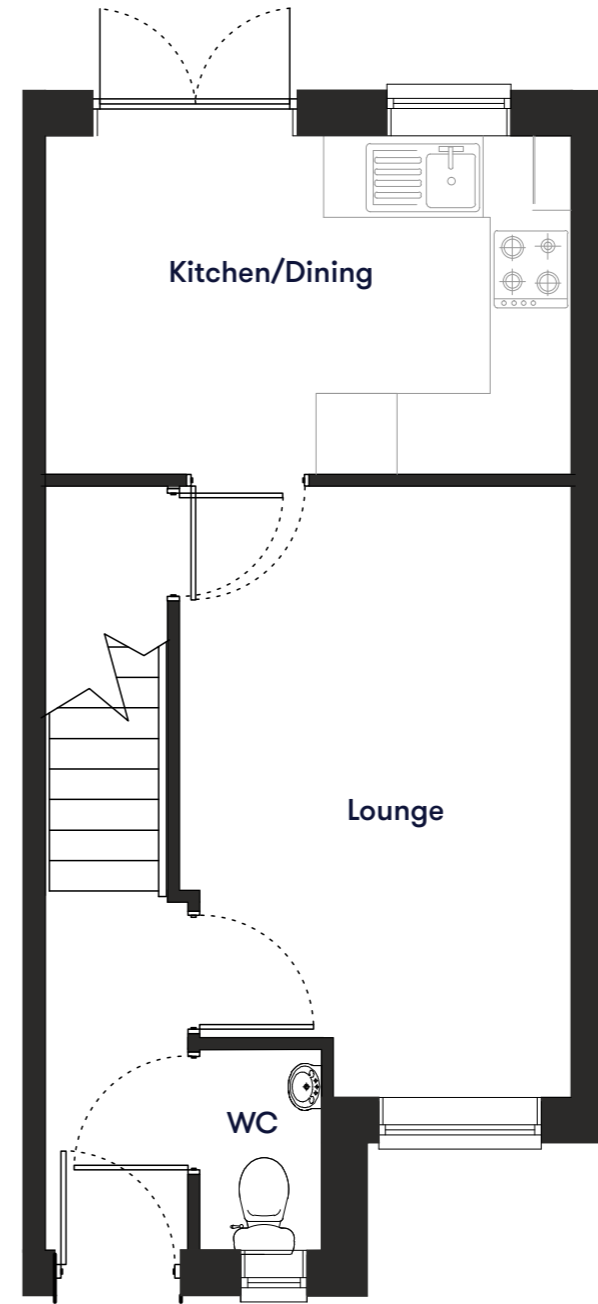
Site plan

- 2 bedroom house
Plots 88, 89 & 90
- Affordable Rent
Plots 102, 103, 104 & 105

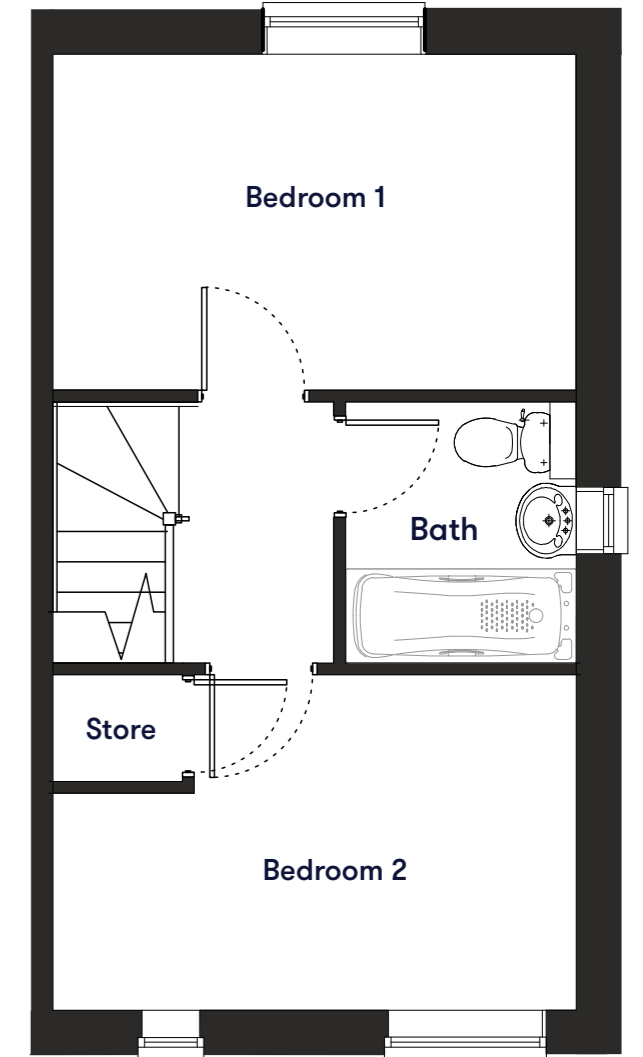


Floor plan

**Plot 88,
89 & 90**
2 Bedroom House



Ground Floor Plan



First Floor Plan

Plot	House type	Open Market Value	40% Share	Rent*
88	2 bed end terrace house with 2 parking spaces	£222,500	£89,000	£285.13
89	2 bedroom mid terraced house with 1 parking space	£217,500	£87,000	£278.88
90	2 bed end terrace house with 2 parking spaces	£222,500	£89,000	£285.13

*Including rent and buildings insurance. Service charge is to be confirmed

