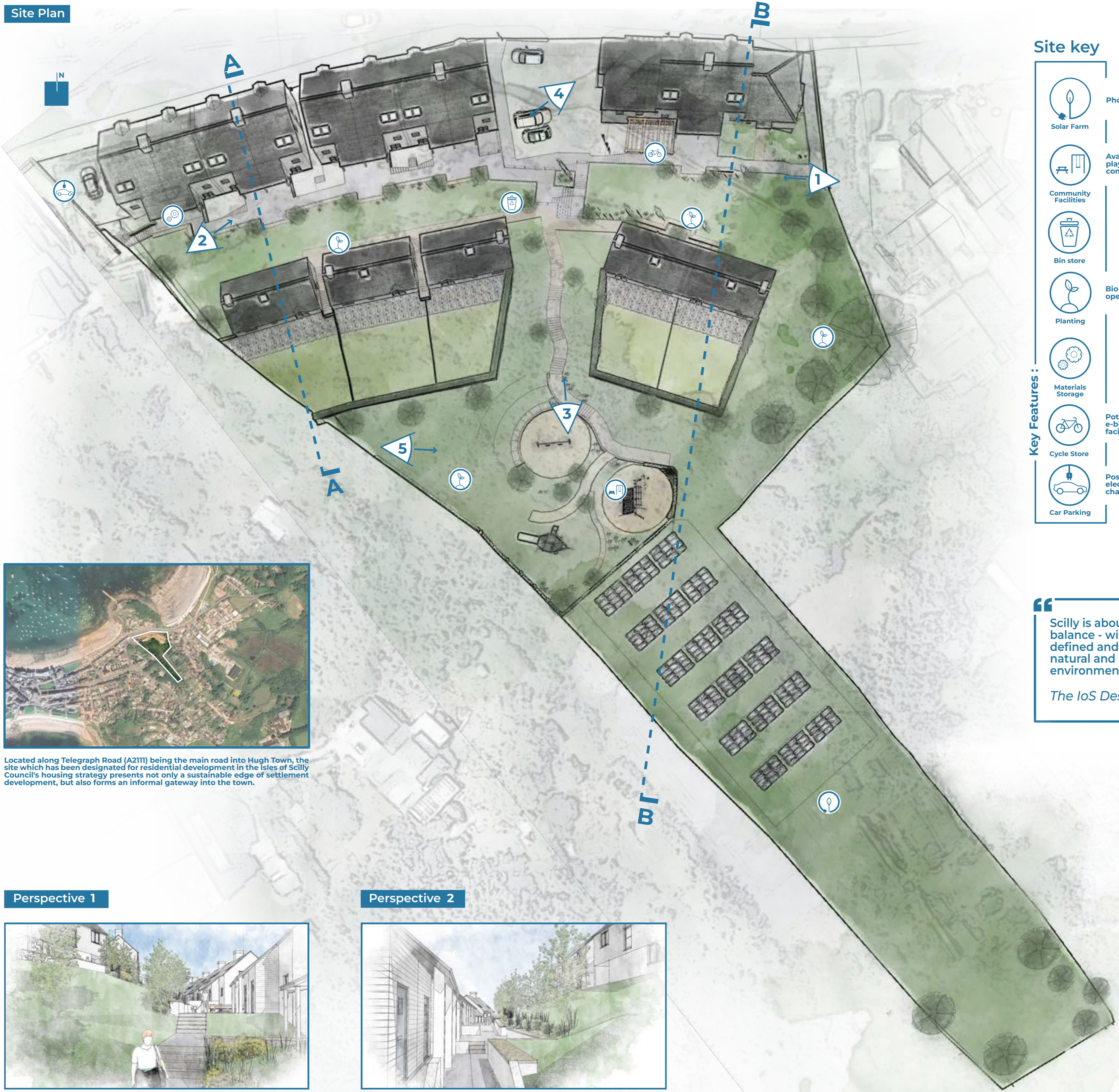


Carn Thomas Site, Isles of Scilly

Concept Design sheet 2

Site Plan



Site key

- | | |
|--|---|
| | Photovoltaic array |
| | Solar Farm |
| | Available space for play or other communal use |
| | Community Facilities |
| | Bin store |
| | Bio diverse green open spaces |
| | Planting |
| | Materials Storage |
| | Potential for e-bike charging facilities |
| | Cycle Store |
| | Possible community electric vehicle charging points |
| | Car Parking |

“ Scilly is about living in balance - within a very defined and remarkable natural and man made environment. ”
The IoS Design Guide



Located along Telegraph Road (A2111) being the main road into Hugh Town, the site which has been designated for residential development in the Isles of Scilly Council's housing strategy presents not only a sustainable edge of settlement development, but also forms an informal gateway into the town.

Perspective 1



Perspective 2



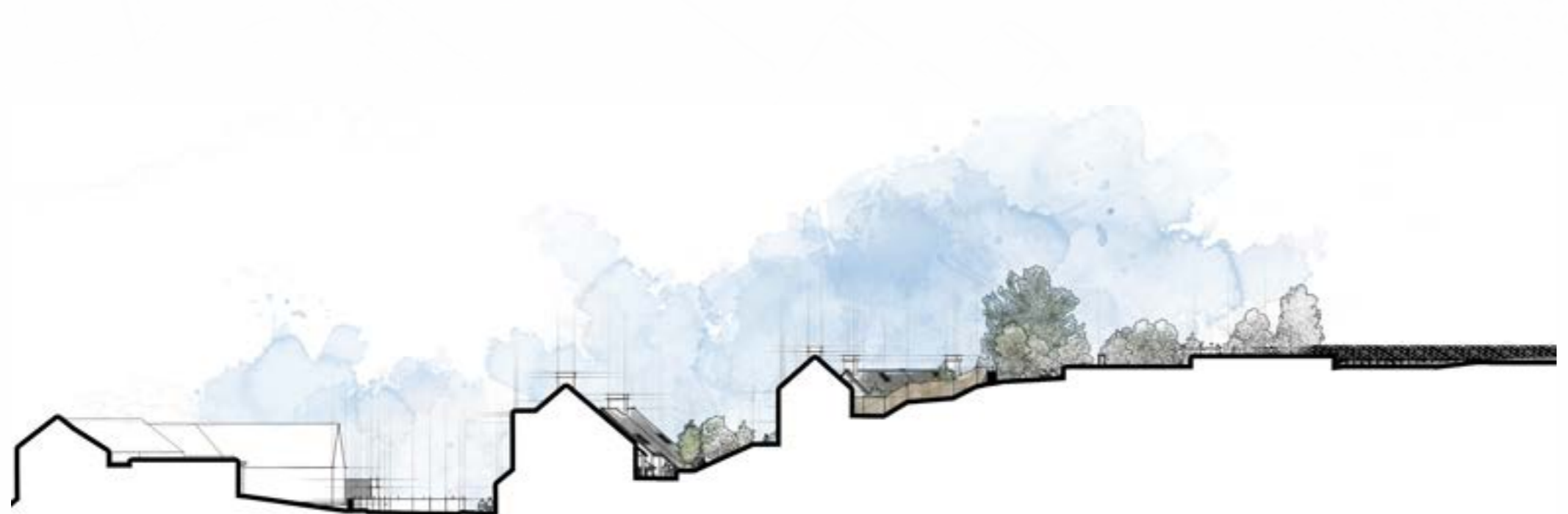
Perspective 3



Perspective 4



Perspective 5



Section A A



Section B B