

Want to be a Tree Guardian?

We are always looking to plant more trees across our communities

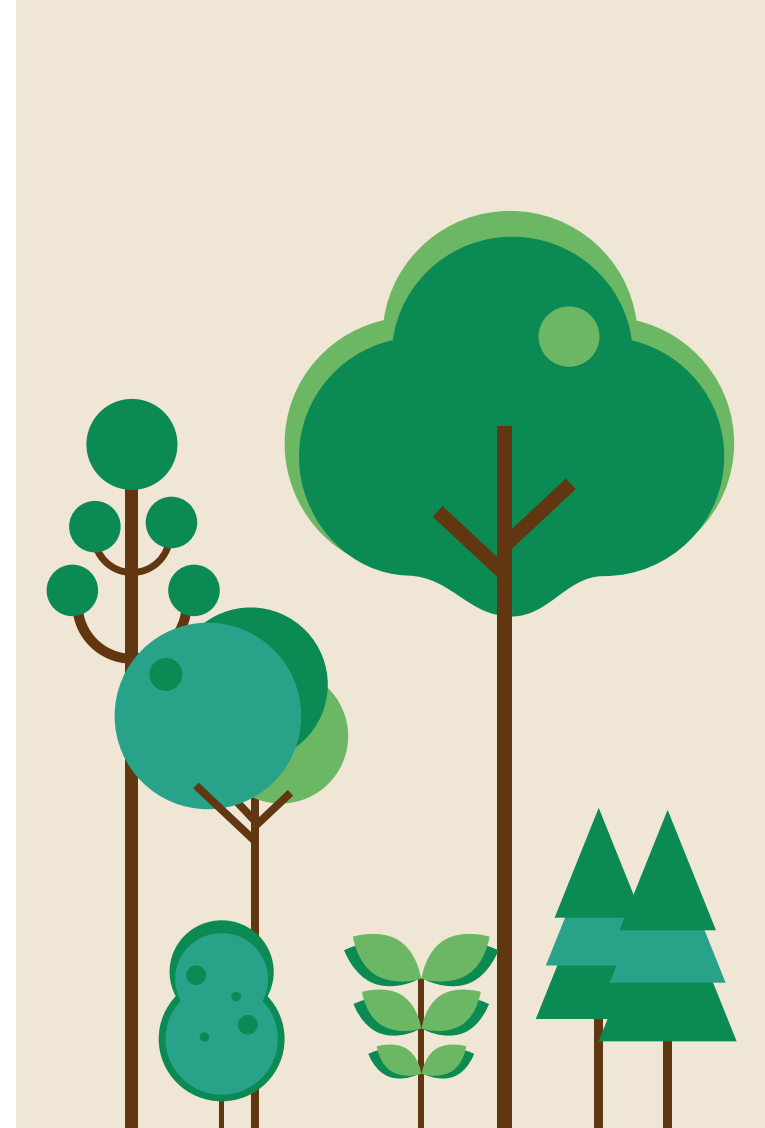
- to absorb pollution and carbon dioxide, provide a home for wildlife, and make places look better!

Trees also benefit us by improving our wellbeing.

When we plant trees, they need a helping hand for the first few years

- they need regular watering, occasional weeding, and someone to 'keep an eye on them' as they develop.

We have a team of contractors who can do this for us, but we would love for our customers to be involved to become Tree Guardians where they can.



Want to be a Tree Guardian?

LiveWest
Creating Greener
Futures Together

Contact us

☎ 0300 123 8080

✉ community.investment@livewest.co.uk

📘 LiveWest: Connecting Communities

🌐 livewest.co.uk

LiveWest

What will a Tree Guardian need to do?



Watering

New trees are thirsty and generally need watering from March to September, when the weather is drier and they are in leaf.

Most of our new trees are fitted with an irrigation bag, which takes about 60 litres of water to fill – a large watering can holds about 10 litres, so it will take several trips! Once the bag is full, the water seeps out through small holes in the bottom, slowly soaking into the soil over 7 or 8 hours – this saves you having to stand and wait while it soaks in. The bag needs filling up once a week when the weather has been dry – unless there has been really heavy rain it is better to fill the bag up as it is hard to overwater but easy to underwater! If there is no irrigation bag, regular watering of 10 or 20 litres a time, 2 or 3 times a week, is probably easier.

If you are not able to continue with the irrigation for any reason, or if you are going to be away, please let us know so we can make other arrangements – do not let the tree dry out, because it might not recover.

If you can, use collected rainwater as it is much better for the tree – and it is free. If you need to use tap water we might be able to contribute toward the cost.

Weeds

If you see weeds growing in the mulch around the base of the tree, please pull them out. Please do not use any weedkillers or chemicals as these can go through the bark or roots of the tree and cause permanent damage or death.

Supports and protection

Some of our trees are fitted with metal cages to protect them, others are supported with wooden stakes.

The strapping we use is made of hessian and is designed to rot through after a year or two so that the tree isn't strangled by the strap. By then it should be able to support itself, but if it seems weak or unstable, please let us know and we will have it re-strapped. Please do not use any sort of plastic or wire to secure the tree as this might cause damage.

We sometimes leave the stakes in place for a few years to help protect the tree from damage by machinery, cars and bikes.

Damage

If you notice any sort of damage please report it to us. If it is vandalism, we will report it to the police as criminal damage, so if you have any information please pass it on to us. We understand that sometimes accidents happen, but if we are notified in time, we may be able to save the tree.

Pruning

Most trees do not need any pruning when they are young. We will check the trees every so often and if any work is needed, we will ask one of our specialist tree contractors to visit. **Hopefully it will be many years before they need to be pruned.**